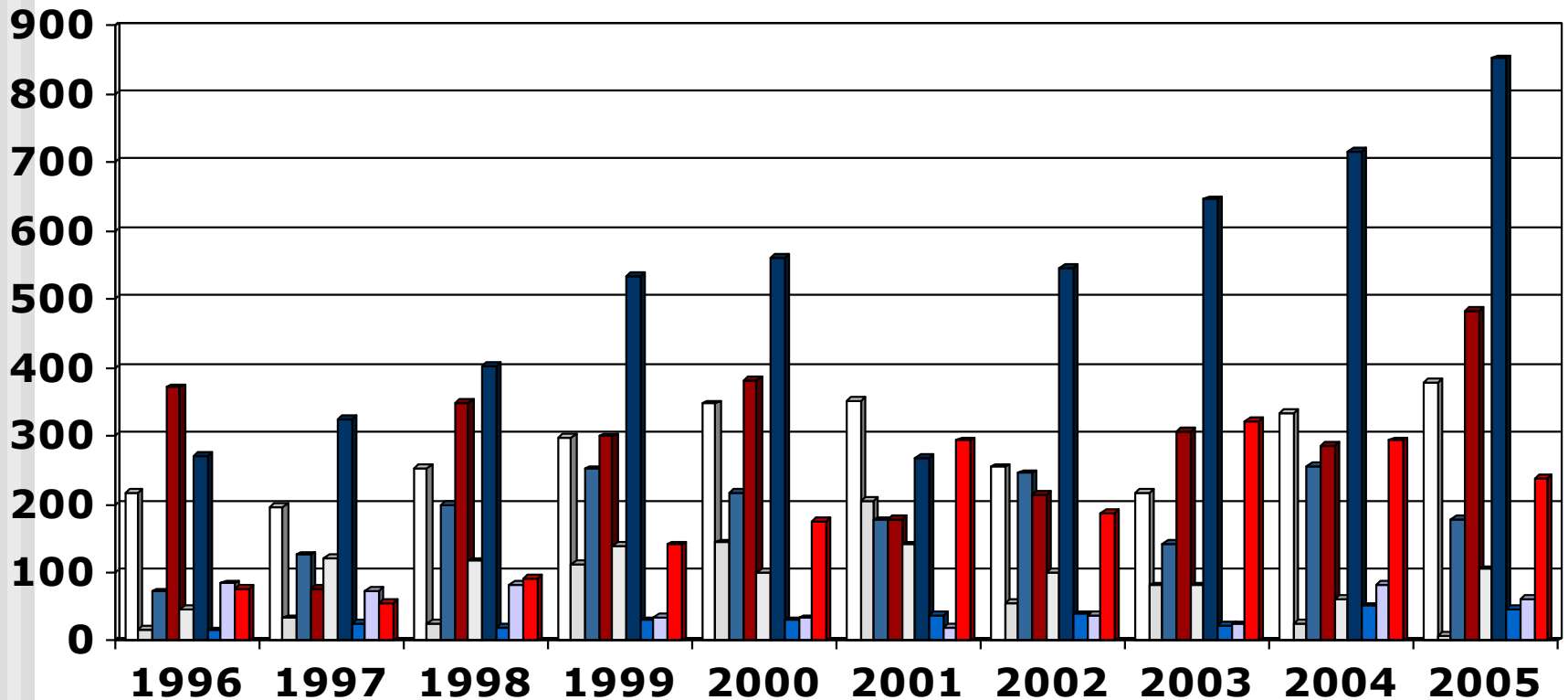


# Output Bridging Programme (1996 - 2005) Overview

---

- These slides show the output of Nursing Education Institutions providing the bridging programme leading to registration as a General Nurse or as a Psychiatric Nurse for the years 1996 – 2005
- The slide is presented twice: first without data tables and then with the full data table
- For further information, please contact:
  - S A Nursing Council:  
P O Box 1123, Pretoria, 0001, Republic of South Africa
  - Phone: (012) 420-1000
  - Fax: (012) 343-5400
  - E-mail: [registrar@sanc.co.za](mailto:registrar@sanc.co.za)
  - Website: [www.sanc.co.za](http://www.sanc.co.za)

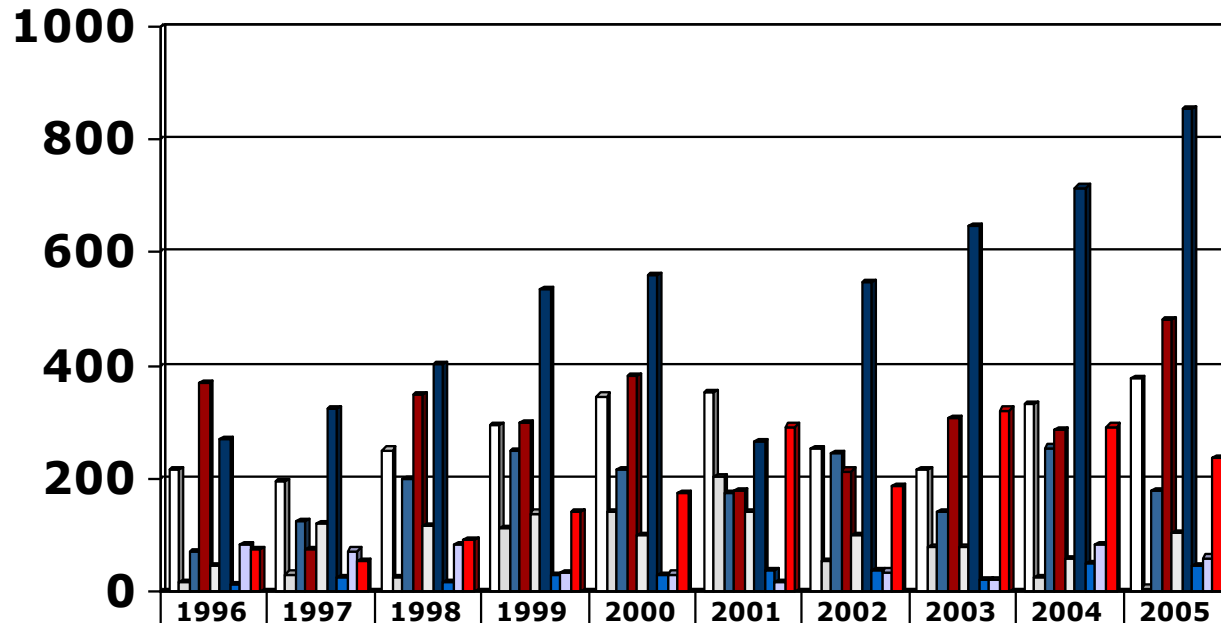
# Output Bridging Programme (1996 - 2005) All Institutions



Limpopo
  North West
  Mpumulanga
  Gauteng
  Free State

KwaZulu Natal
  Northern Cape
  Western Cape
  Eastern Cape

# Output Bridging Programme (1996 - 2005) All Institutions



	1996	1997	1998	1999	2000	2001	2002	2003	2004	2005
□ Limpopo	216	196	252	297	347	352	254	216	333	379
□ North West	17	33	25	113	144	204	55	81	25	8
■ Mpumulanga	72	126	200	251	218	177	245	142	256	179
■ Gauteng	371	76	349	299	382	178	215	307	286	483
□ Free State	46	122	117	140	100	141	101	81	61	105
■ KwaZulu Natal	271	324	403	534	561	268	546	646	715	852
■ Northern Cape	15	26	19	30	30	38	39	22	51	46
□ Western Cape	84	74	83	34	33	19	37	24	83	62
■ Eastern Cape	77	56	91	141	176	293	187	322	293	238