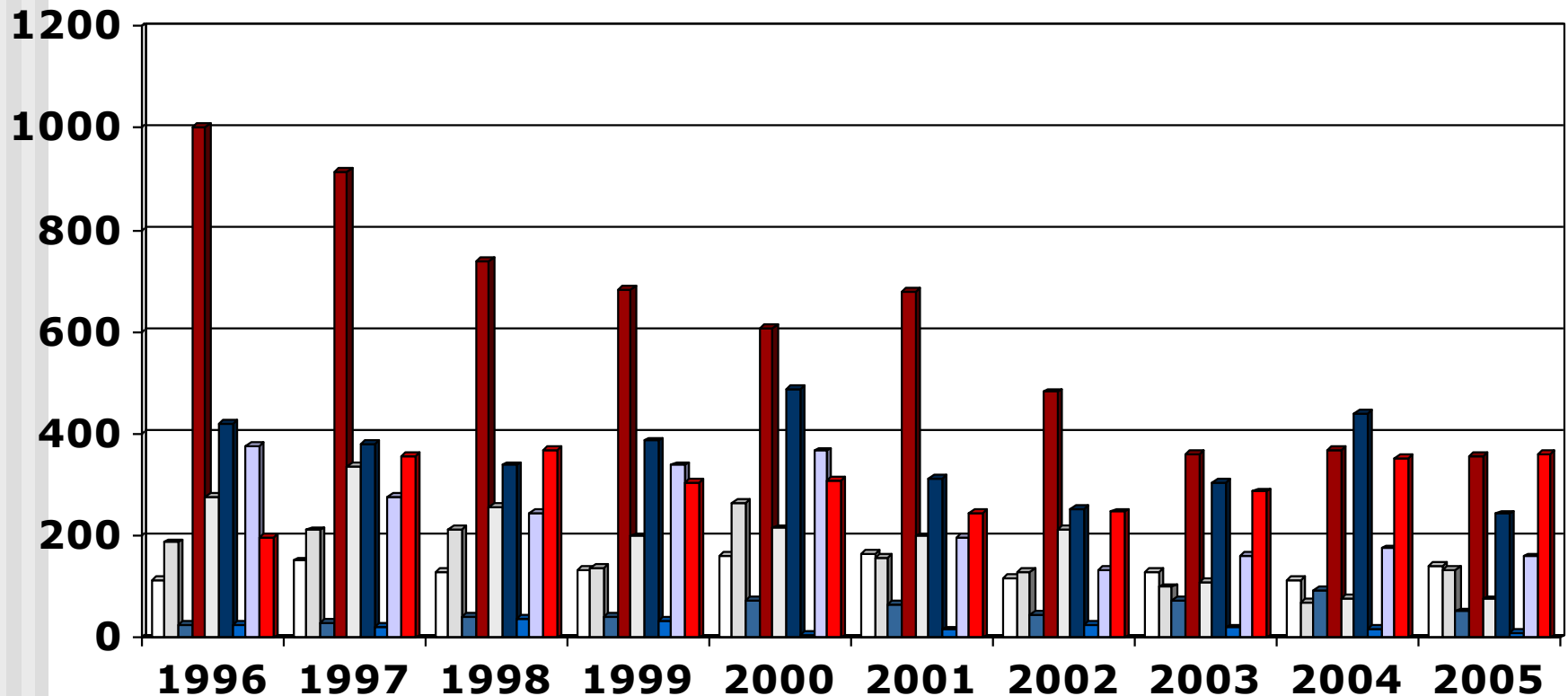


Output 4-Year Programme (1996 - 2005) Overview

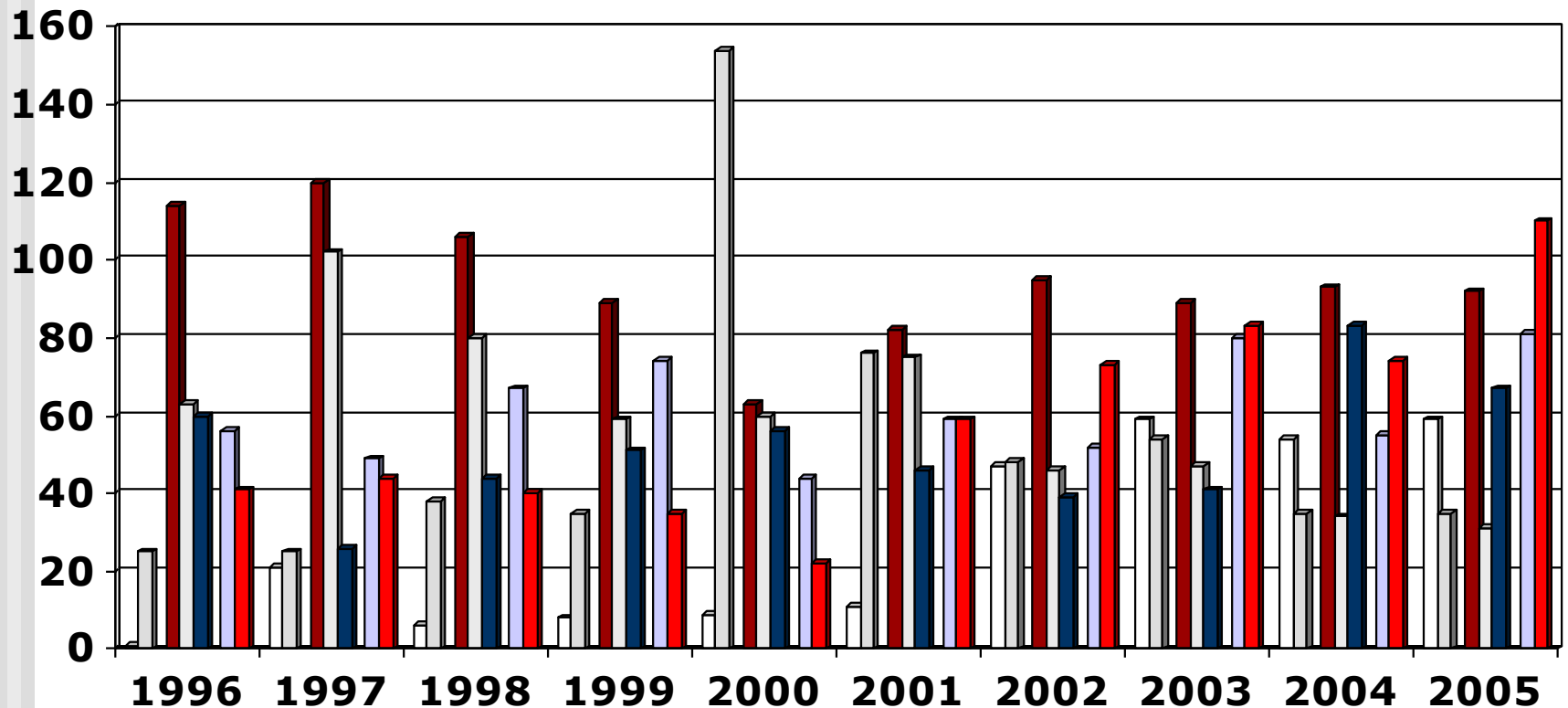
- These slides show the output of Nursing Education Institutions (Nursing Colleges and Universities) providing the 4-year programme leading to registration as a Nurse (General, Psychiatric and Community) and Midwife for the years 1996 – 2005
- Each slide is presented twice: first all slides are shown without data tables and then the slides are repeated with full data tables
- For further information, please contact:
 - S A Nursing Council:
P O Box 1123, Pretoria, 0001, Republic of South Africa
 - Phone: (012) 420-1000
 - Fax: (012) 343-5400
 - E-mail: registrar@sanc.co.za
 - Website: www.sanc.co.za

Output 4-Year Programme

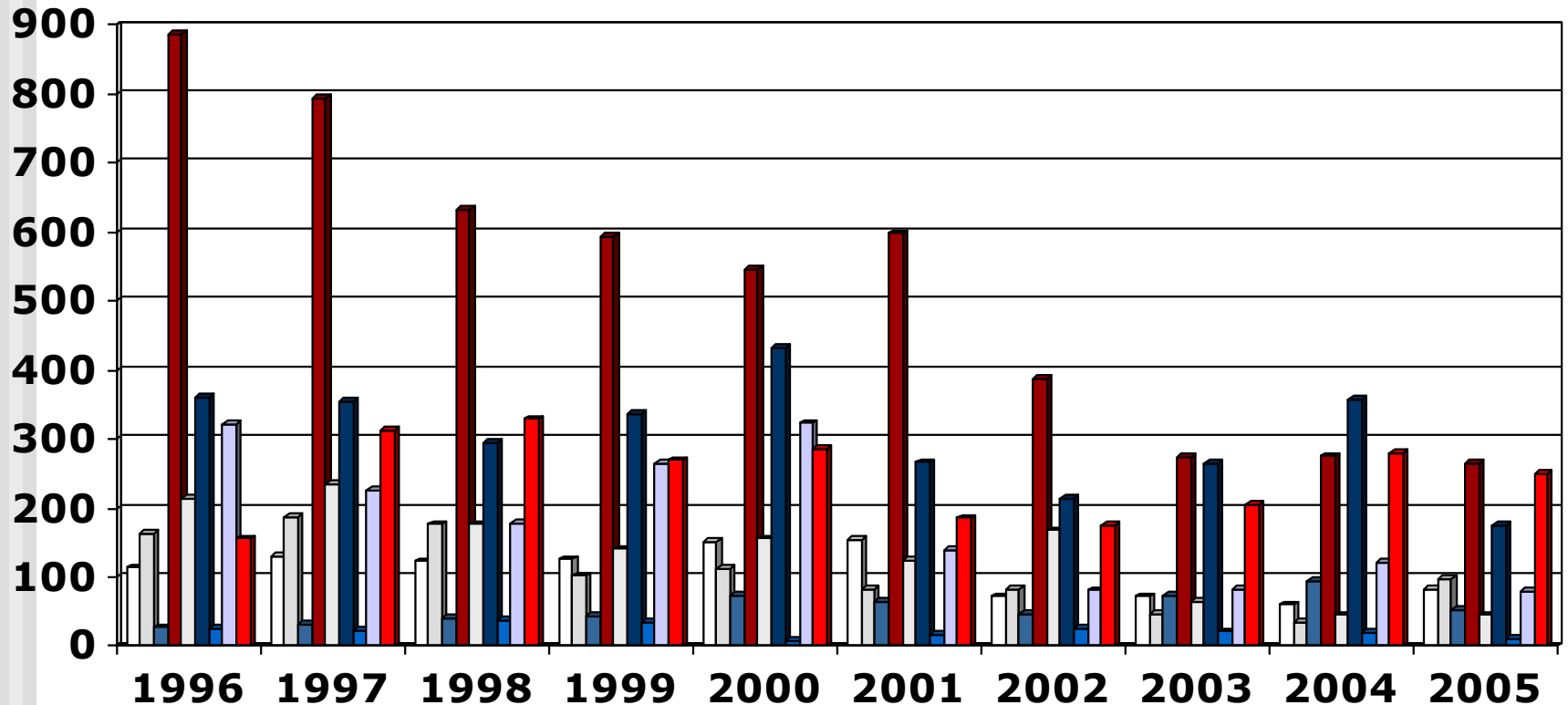
(1996 - 2005) All Institutions



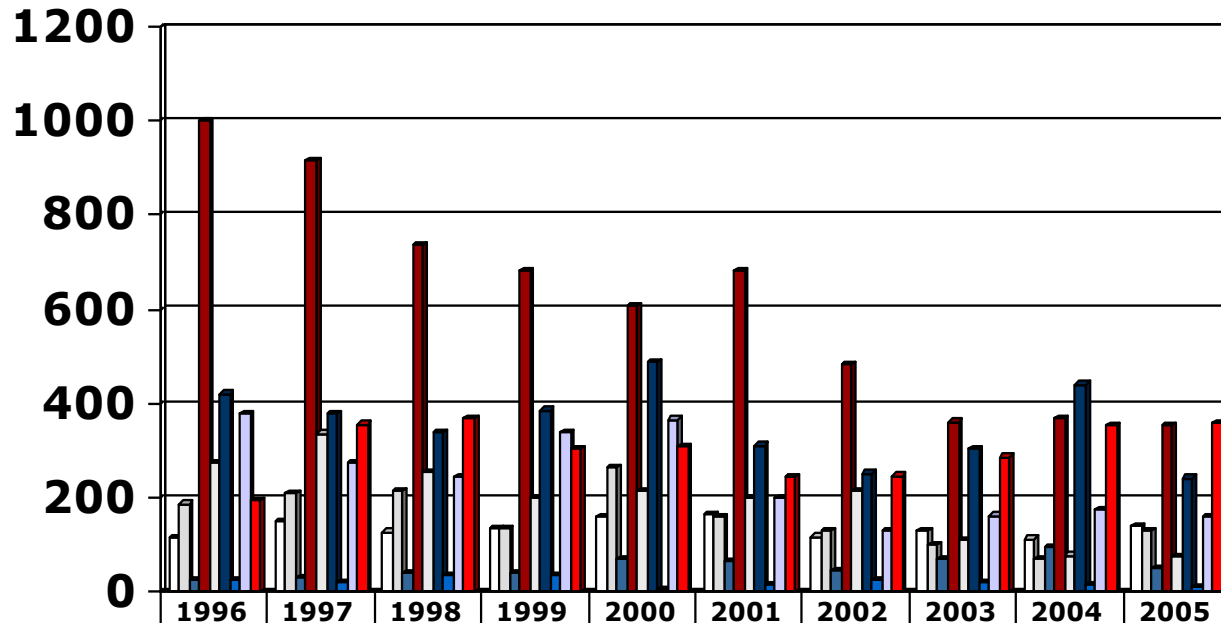
Output 4-Year Programme (1996 - 2005) Universities



Output 4-Year Programme (1996 - 2005) Nursing Colleges

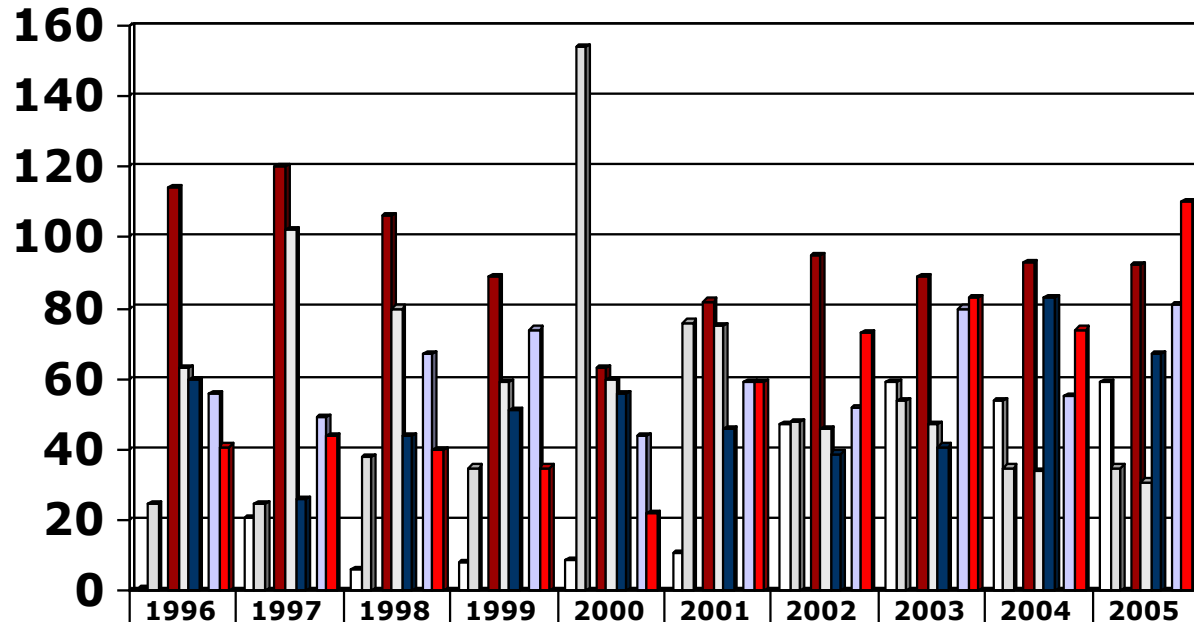


Output 4-Year Programme (1996 - 2005) All Institutions



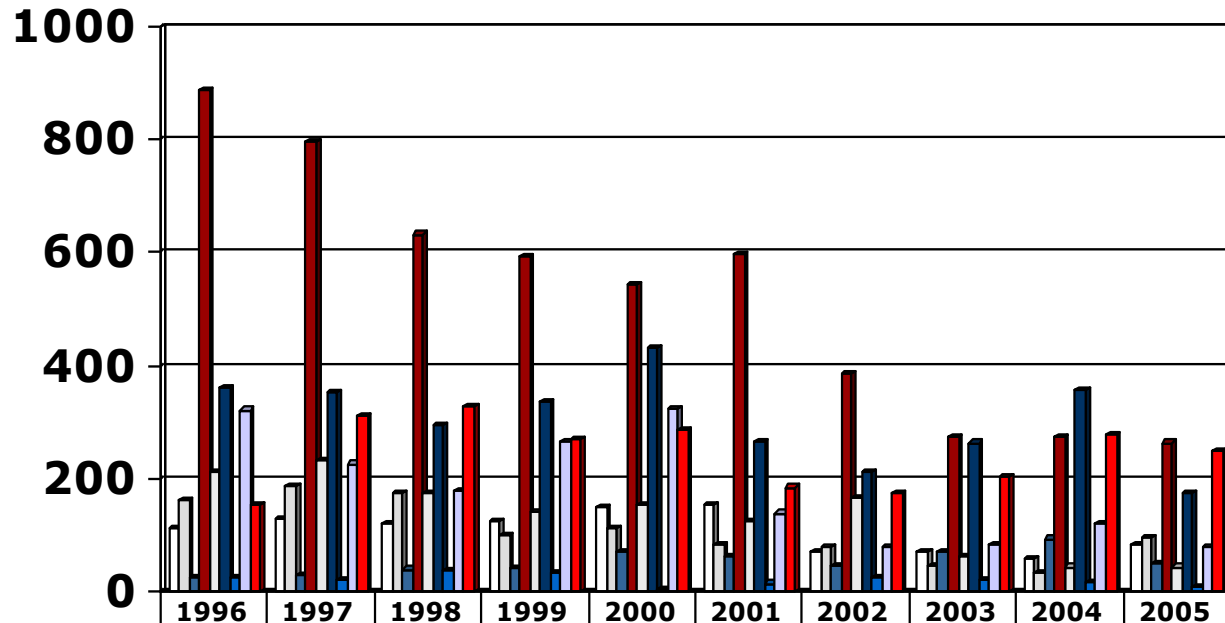
| | 1996 | 1997 | 1998 | 1999 | 2000 | 2001 | 2002 | 2003 | 2004 | 2005 |
|-----------------|------|------|------|------|------|------|------|------|------|------|
| □ Limpopo | 115 | 152 | 129 | 134 | 161 | 165 | 119 | 131 | 114 | 142 |
| □ North West | 188 | 212 | 215 | 137 | 266 | 159 | 130 | 100 | 70 | 133 |
| ■ Mpumulanga | 27 | 31 | 41 | 43 | 73 | 65 | 47 | 73 | 95 | 52 |
| ■ Gauteng | 1001 | 914 | 738 | 683 | 608 | 680 | 483 | 362 | 368 | 356 |
| □ Free State | 277 | 337 | 257 | 200 | 216 | 200 | 214 | 111 | 79 | 76 |
| ■ KwaZulu Natal | 421 | 380 | 339 | 387 | 488 | 312 | 253 | 305 | 441 | 243 |
| ■ Northern Cape | 25 | 23 | 38 | 35 | 7 | 16 | 25 | 21 | 19 | 11 |
| □ Western Cape | 378 | 276 | 245 | 339 | 367 | 199 | 133 | 163 | 176 | 160 |
| ■ Eastern Cape | 197 | 357 | 369 | 304 | 308 | 245 | 248 | 287 | 354 | 360 |

Output 4-Year Programme (1996 - 2005) Universities



| | 1996 | 1997 | 1998 | 1999 | 2000 | 2001 | 2002 | 2003 | 2004 | 2005 |
|-----------------|------|------|------|------|------|------|------|------|------|------|
| □ Limpopo | 1 | 21 | 6 | 8 | 9 | 11 | 47 | 59 | 54 | 59 |
| □ North West | 25 | 25 | 38 | 35 | 154 | 76 | 48 | 54 | 35 | 35 |
| ■ Mpumulanga | | | | | | | | | | |
| ■ Gauteng | 114 | 120 | 106 | 89 | 63 | 82 | 95 | 89 | 93 | 92 |
| □ Free State | 63 | 102 | 80 | 59 | 60 | 75 | 46 | 47 | 34 | 31 |
| ■ KwaZulu Natal | 60 | 26 | 44 | 51 | 56 | 46 | 39 | 41 | 83 | 67 |
| ■ Northern Cape | | | | | | | | | | |
| □ Western Cape | 56 | 49 | 67 | 74 | 44 | 59 | 52 | 80 | 55 | 81 |
| ■ Eastern Cape | 41 | 44 | 40 | 35 | 22 | 59 | 73 | 83 | 74 | 110 |

Output 4-Year Programme (1996 - 2005) Nursing Colleges



| | 1996 | 1997 | 1998 | 1999 | 2000 | 2001 | 2002 | 2003 | 2004 | 2005 |
|-----------------|------|------|------|------|------|------|------|------|------|------|
| □ Limpopo | 114 | 131 | 123 | 126 | 152 | 154 | 72 | 72 | 60 | 83 |
| □ North West | 163 | 187 | 177 | 102 | 112 | 83 | 82 | 46 | 35 | 98 |
| ■ Mpumulanga | 27 | 31 | 41 | 43 | 73 | 65 | 47 | 73 | 95 | 52 |
| ■ Gauteng | 887 | 794 | 632 | 594 | 545 | 598 | 388 | 273 | 275 | 264 |
| □ Free State | 214 | 235 | 177 | 141 | 156 | 125 | 168 | 64 | 45 | 45 |
| ■ KwaZulu Natal | 361 | 354 | 295 | 336 | 432 | 266 | 214 | 264 | 358 | 176 |
| ■ Northern Cape | 25 | 23 | 38 | 35 | 7 | 16 | 25 | 21 | 19 | 11 |
| □ Western Cape | 322 | 227 | 178 | 265 | 323 | 140 | 81 | 83 | 121 | 79 |
| ■ Eastern Cape | 156 | 313 | 329 | 269 | 286 | 186 | 175 | 204 | 280 | 250 |