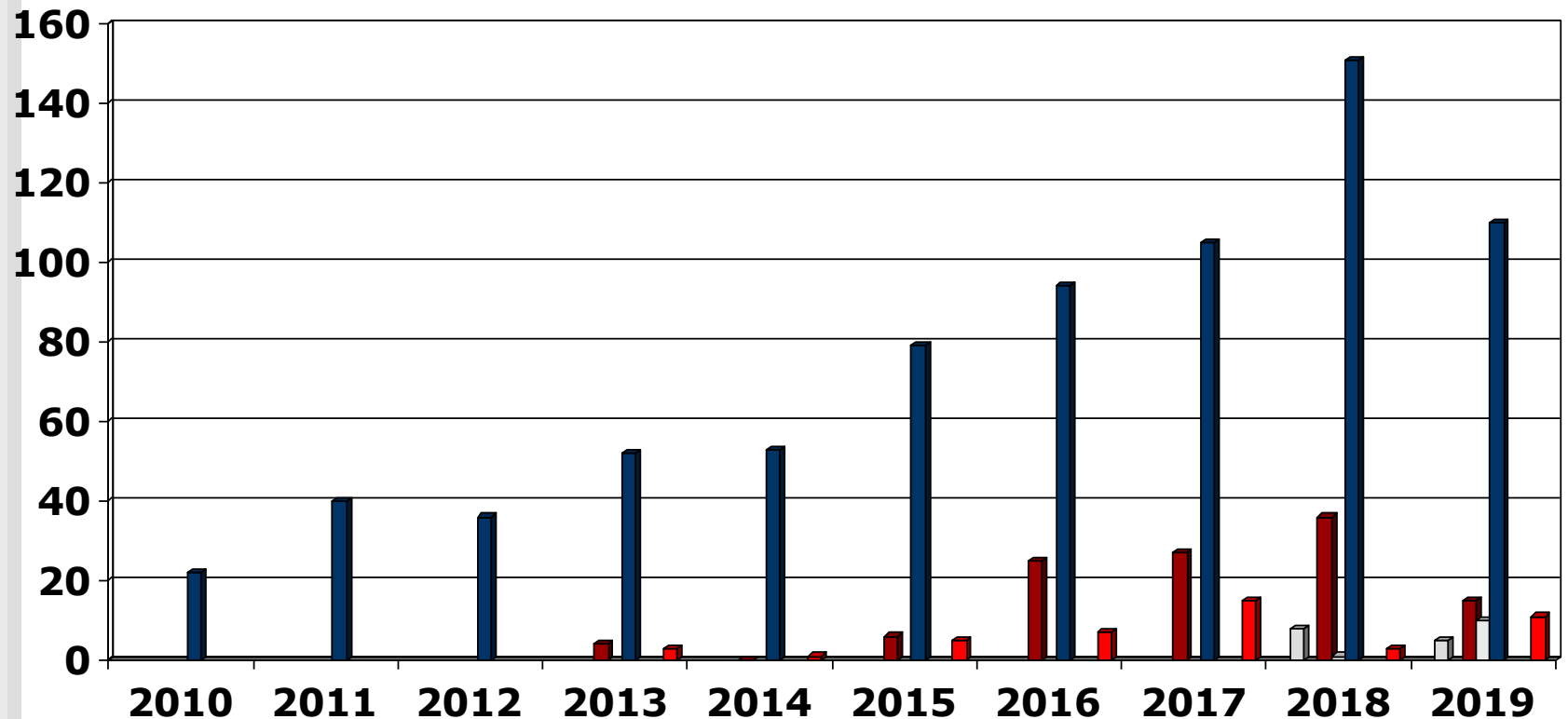


# Output Midwifery Programme (2010 - 2019) Overview

---

- These slides show the output of Nursing Education Institutions (Public and Private Institutions) providing the programme leading to registration as a Midwife for the years 2010 - 2019
- Each slide is presented twice: first all slides are shown without data tables and then the slides are repeated with full data tables
- For further information, please contact:
  - S A Nursing Council:  
Private Bag X132, Pretoria, 0001, Republic of South Africa
  - Phone: 012 420-1000
  - Fax: 012 343-5400
  - E-mail: [customerservice@sanc.co.za](mailto:customerservice@sanc.co.za)
  - Website: [www.sanc.co.za](http://www.sanc.co.za)

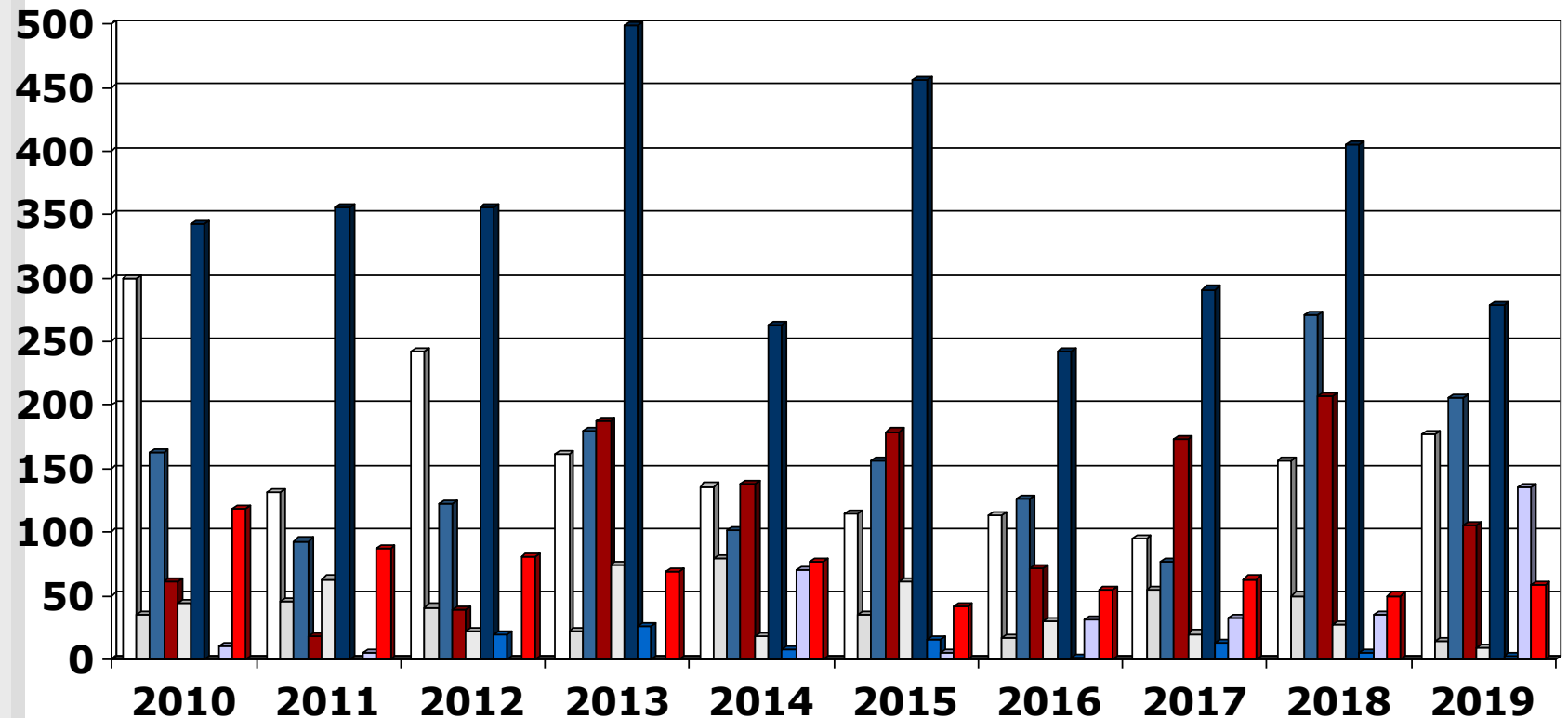
# Output Midwifery Programme (2010 - 2019) Private Institutions



Limpopo
  North West
  Mpumulanga
  Gauteng
  Free State

KwaZulu Natal
  Northern Cape
  Western Cape
  Eastern Cape

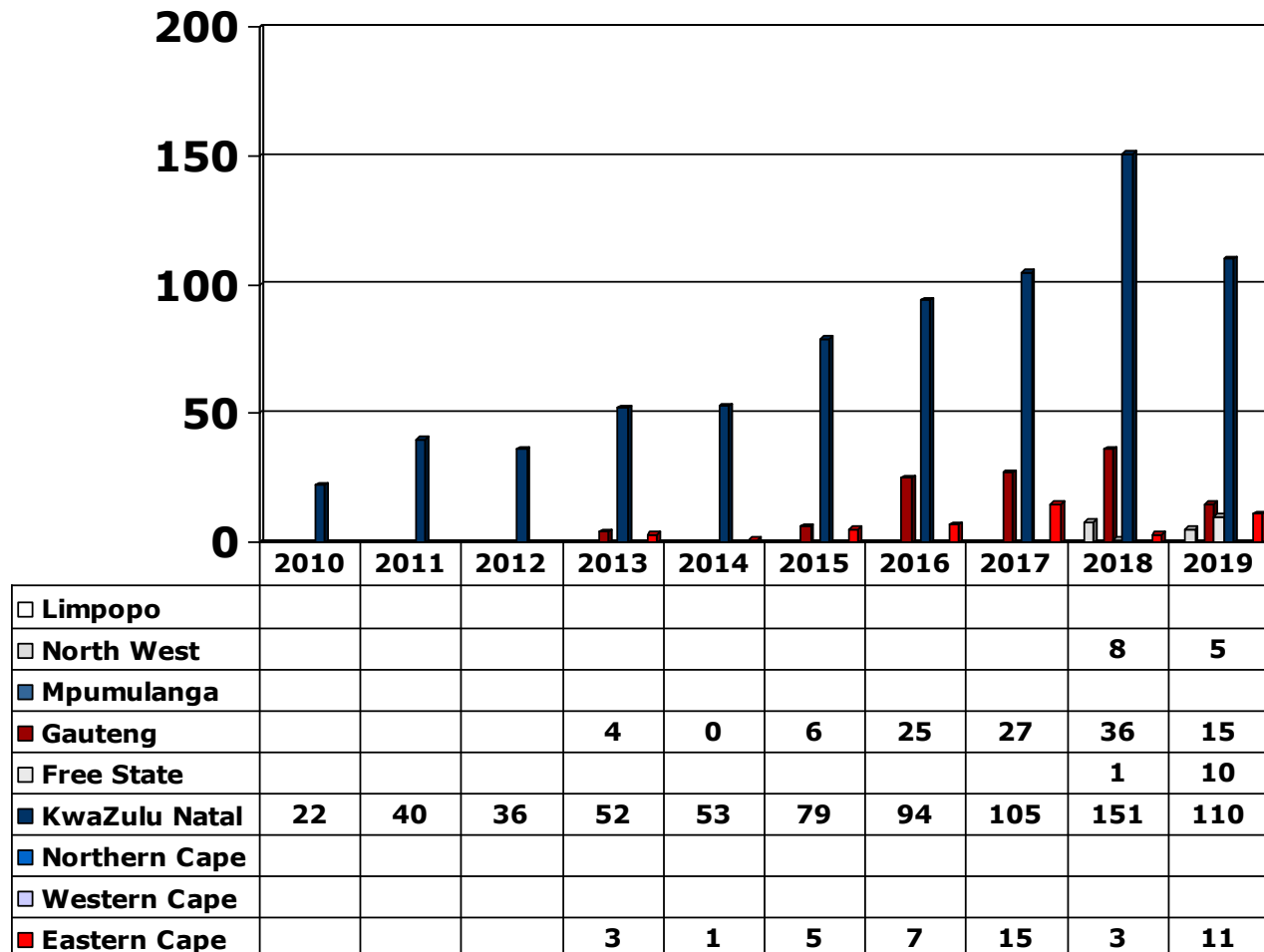
# Output Midwifery Programme (2010 - 2019) Public Institutions



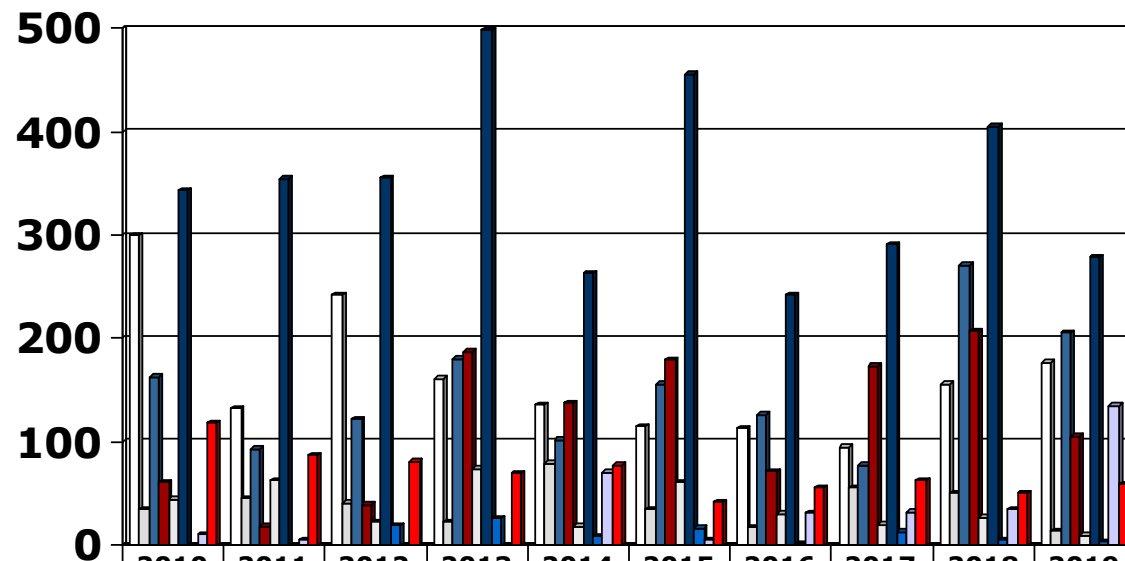
Limpopo
  North West
  Mpumulanga
  Gauteng
  Free State

KwaZulu Natal
  Northern Cape
  Western Cape
  Eastern Cape

# Output Midwifery Programme (2010 - 2019) Private Institutions



# Output Midwifery Programme (2010 - 2019) Public Institutions



	2010	2011	2012	2013	2014	2015	2016	2017	2018	2019
□ Limpopo	300	132	242	161	136	115	113	95	156	177
□ North West	35	45	41	22	79	35	17	55	50	14
■ Mpumulanga	163	93	122	180	102	156	126	77	271	206
■ Gauteng	61	18	39	187	138	179	71	173	207	105
□ Free State	44	63	22	74	18	61	30	20	27	9
■ KwaZulu Natal	343	355	356	499	263	456	242	291	405	279
■ Northern Cape			19	26	8	16	1	13	5	3
□ Western Cape	10	5			70	5	31	32	35	135
■ Eastern Cape	118	87	81	69	77	42	55	63	50	59