

# Output Pupil Nurses

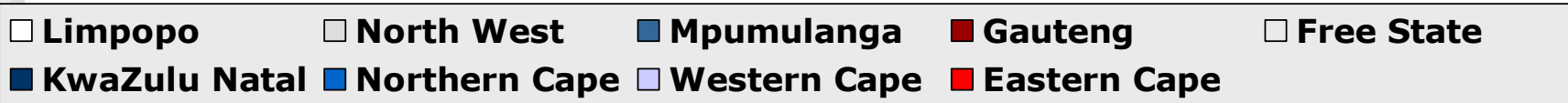
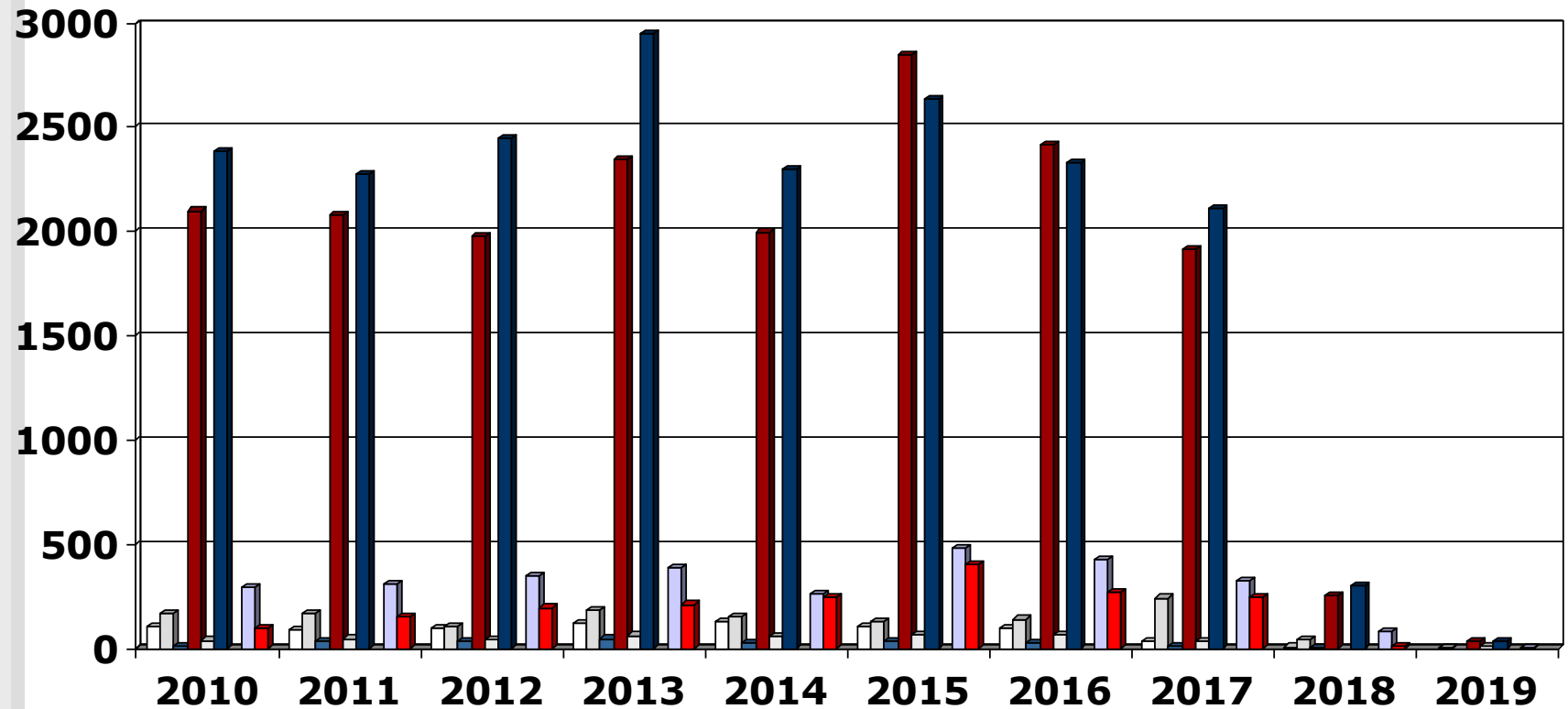
## (2010 - 2019) Overview

---

- These slides show the output of Nursing Education Institutions (Public and Private Institutions) providing the programme leading to enrolment as an Enrolled Nurse for the years 2010 - 2019
- Each slide is presented twice: first all slides are shown without data tables and then the slides are repeated with full data tables
- For further information, please contact:
  - S A Nursing Council:  
Private Bag X132, Pretoria, 0001, Republic of South Africa
  - Phone: 012 420-1000
  - Fax: 012 343-5400
  - E-mail: [customerservice@sanc.co.za](mailto:customerservice@sanc.co.za)
  - Website: [www.sanc.co.za](http://www.sanc.co.za)

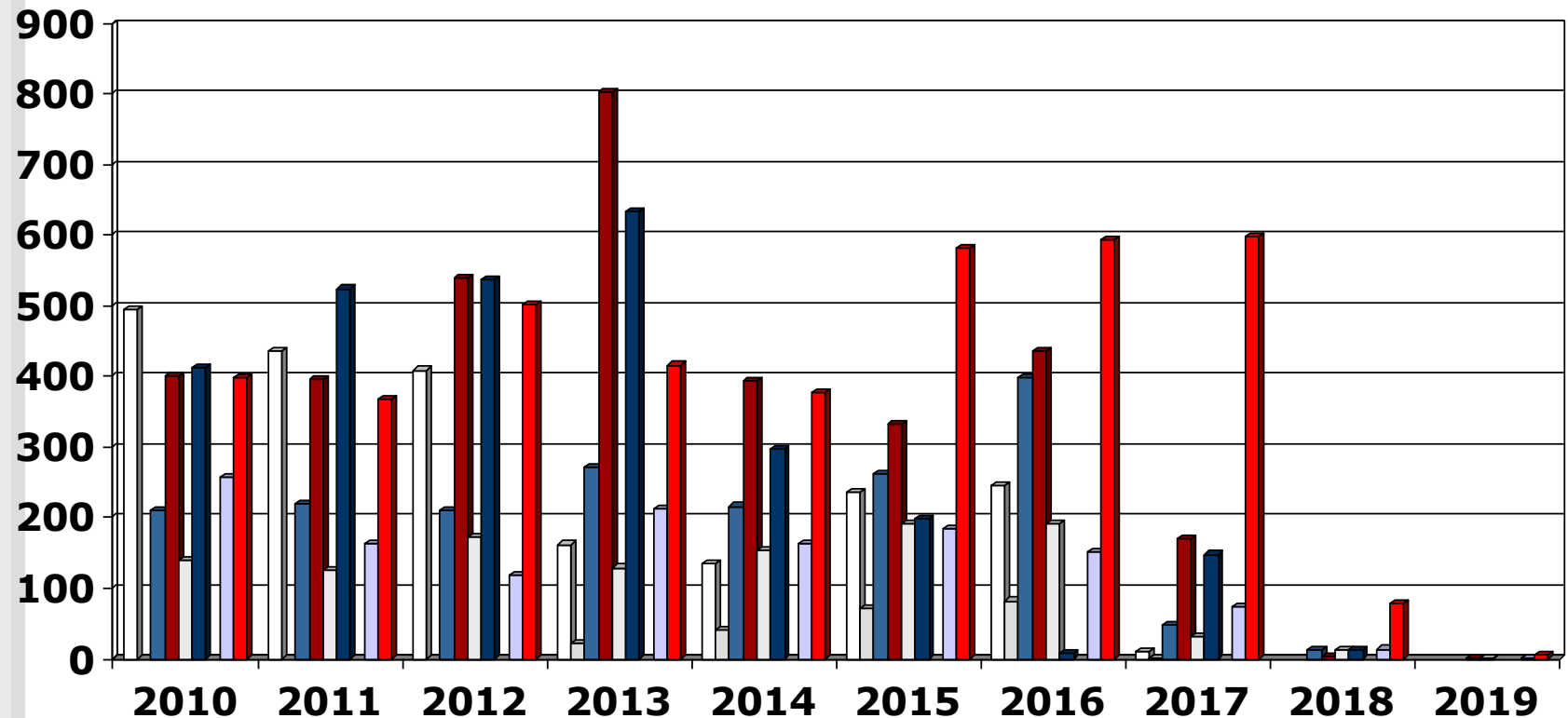
# Output Pupil Nurses

(2010 - 2019) Private Institutions



# Output Pupil Nurses

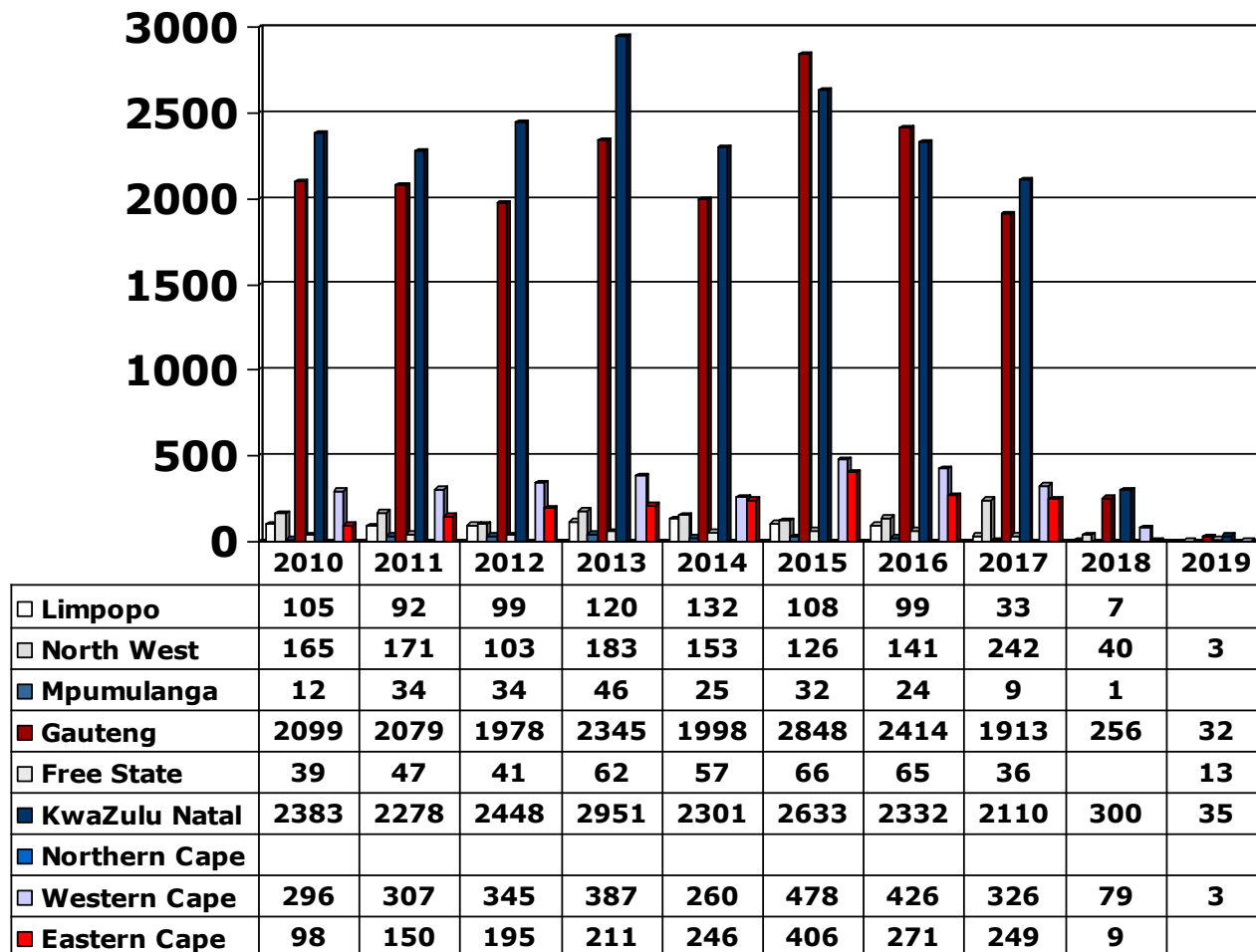
(2010 - 2019) Public Institutions



□ Limpopo    □ North West    ■ Mpumulanga    ■ Gauteng    □ Free State  
■ KwaZulu Natal    ■ Northern Cape    ■ Western Cape    ■ Eastern Cape

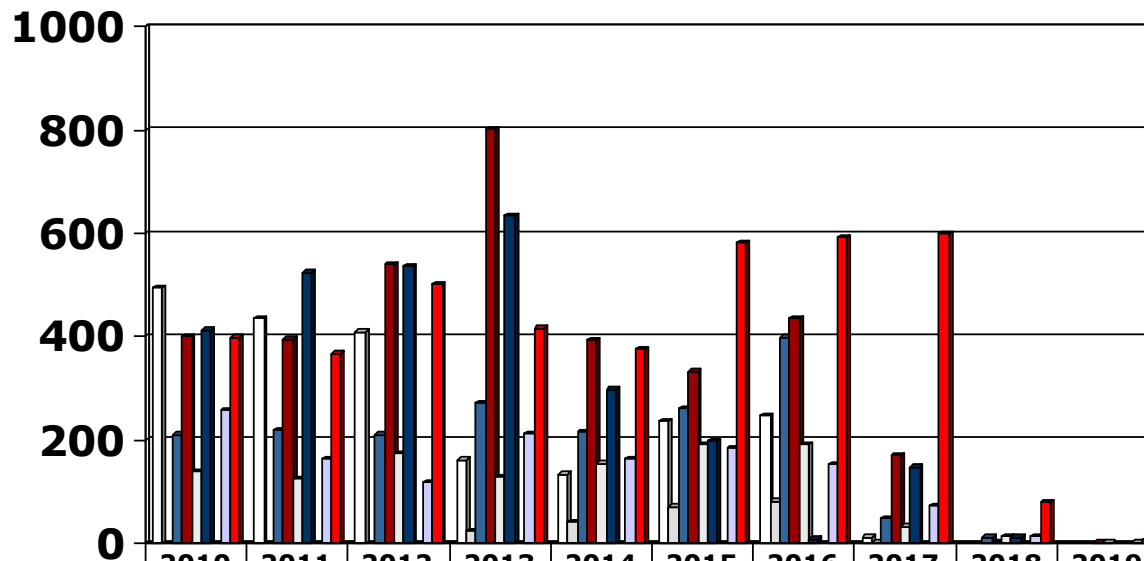
# Output Pupil Nurses

(2010 - 2019) Private Institutions



# Output Pupil Nurses

(2010 - 2019) Public Institutions



	2010	2011	2012	2013	2014	2015	2016	2017	2018	2019
□ Limpopo	494	436	409	162	134	237	246	11		
□ North West				23	41	71	82	1		
■ Mpumulanga	211	219	211	271	216	262	399	48	12	
■ Gauteng	401	396	540	802	394	333	435	171	3	1
□ Free State	139	126	173	129	154	191	192	32	13	1
■ KwaZulu Natal	413	524	536	634	297	199	8	148	12	
■ Northern Cape										
□ Western Cape	257	164	119	212	164	184	152	73	14	1
■ Eastern Cape	399	368	501	416	377	582	593	599	79	6