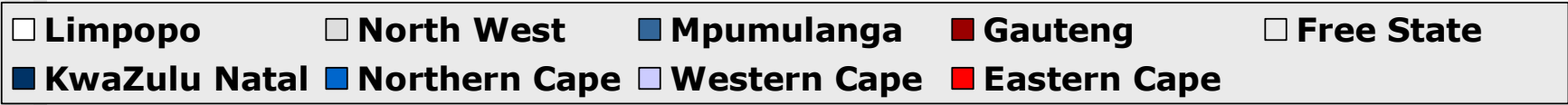
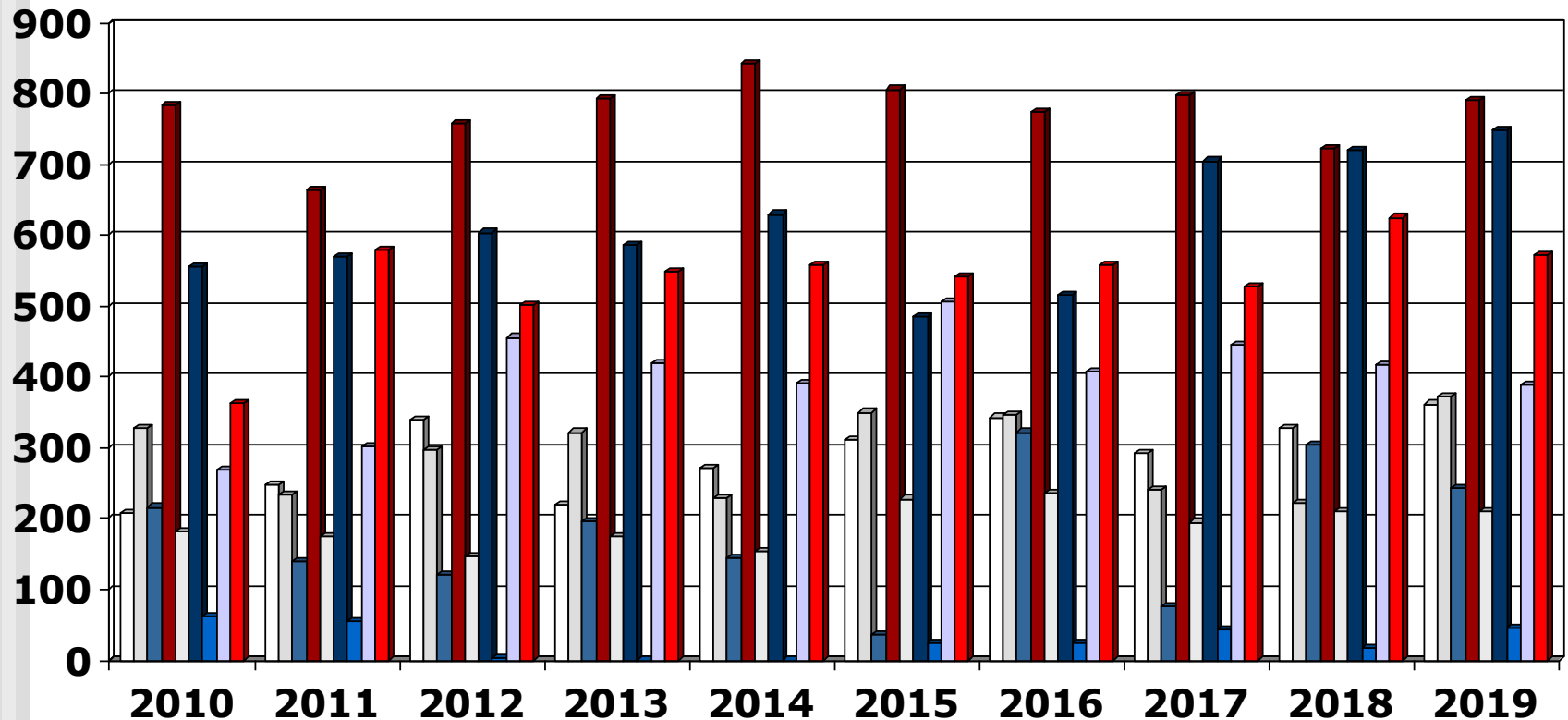


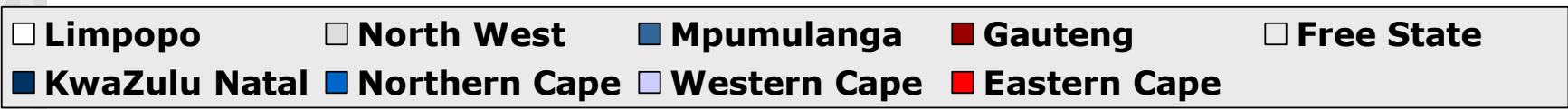
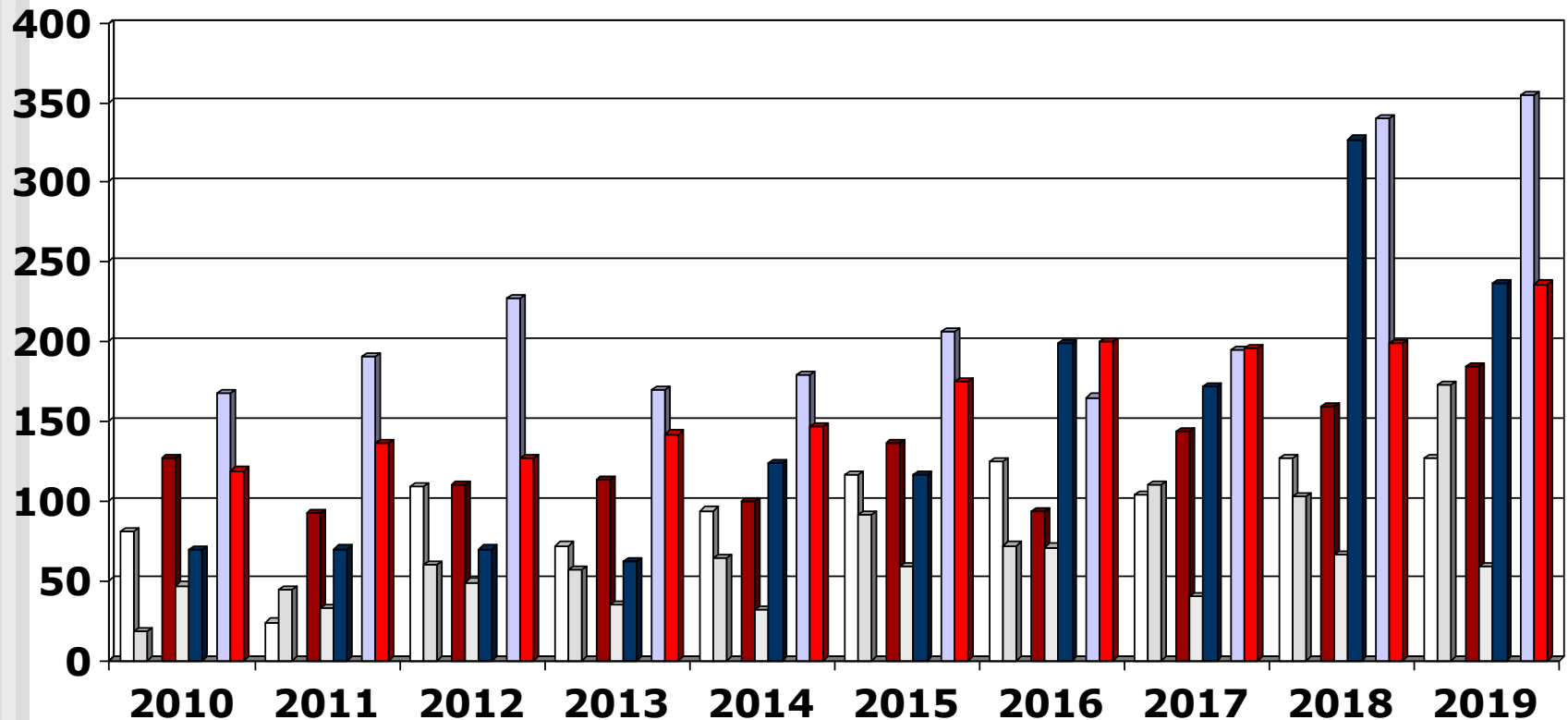
Output 4-Year Programme (2010 - 2019) Overview

- These slides show the output of Nursing Education Institutions (Nursing Colleges and Universities) providing the 4-year programme leading to registration as a Nurse (General, Psychiatric and Community) and Midwife for the years 2010 - 2019
- Each slide is presented twice: first all slides are shown without data tables and then the slides are repeated with full data tables
- For further information, please contact:
 - S A Nursing Council:
Private Bag X132, Pretoria, 0001, Republic of South Africa
 - Phone: 012 420-1000
 - Fax: 012 343-5400
 - E-mail: customerservice@sanc.co.za
 - Website: www.sanc.co.za

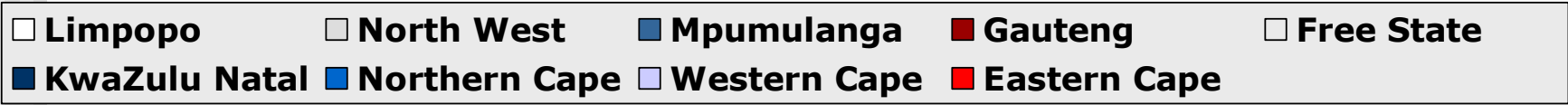
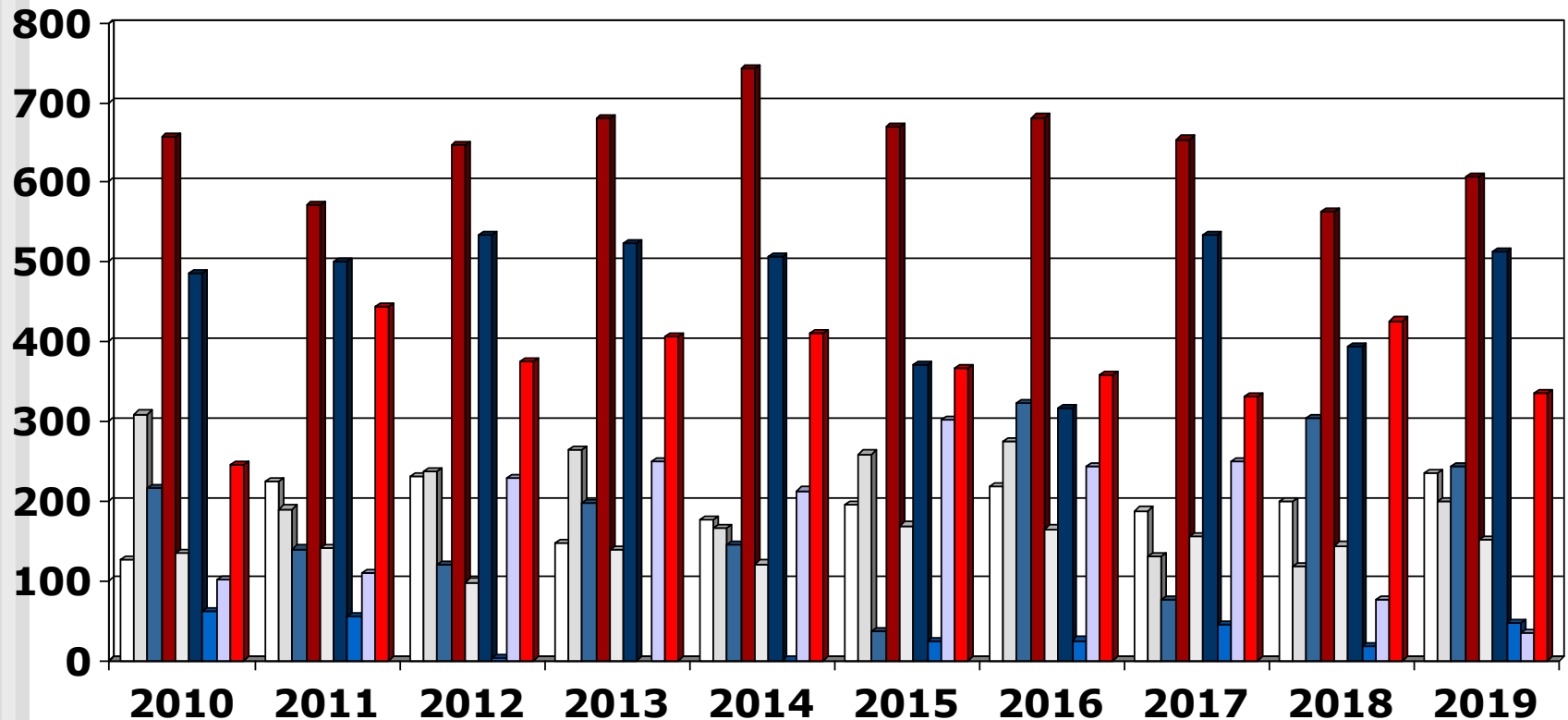
Output 4-Year Programme (2010 - 2019) All Institutions



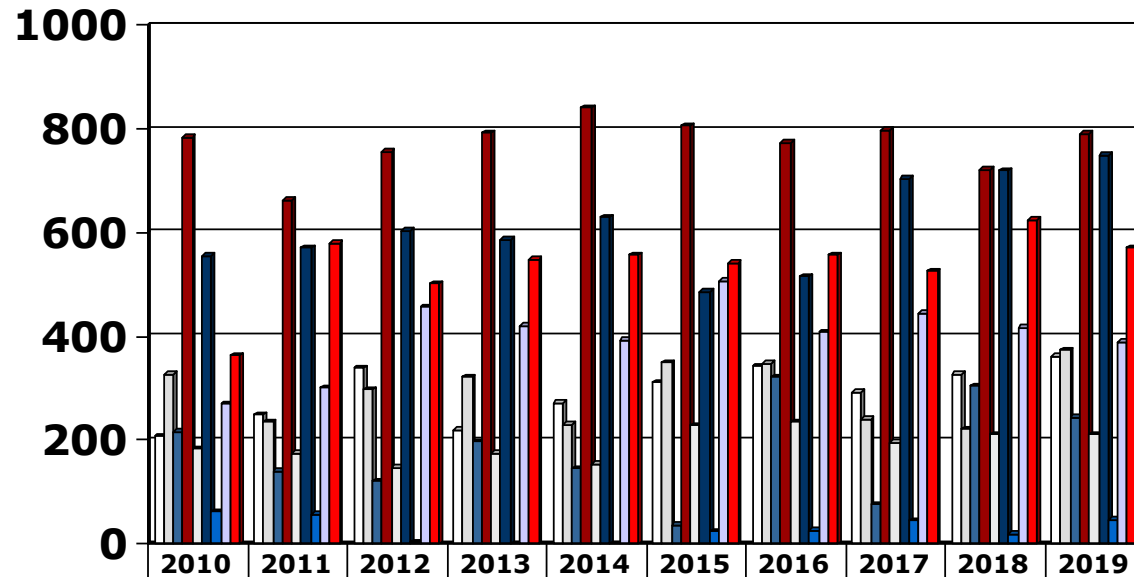
Output 4-Year Programme (2010 - 2019) Universities



Output 4-Year Programme (2010 - 2019) Nursing Colleges

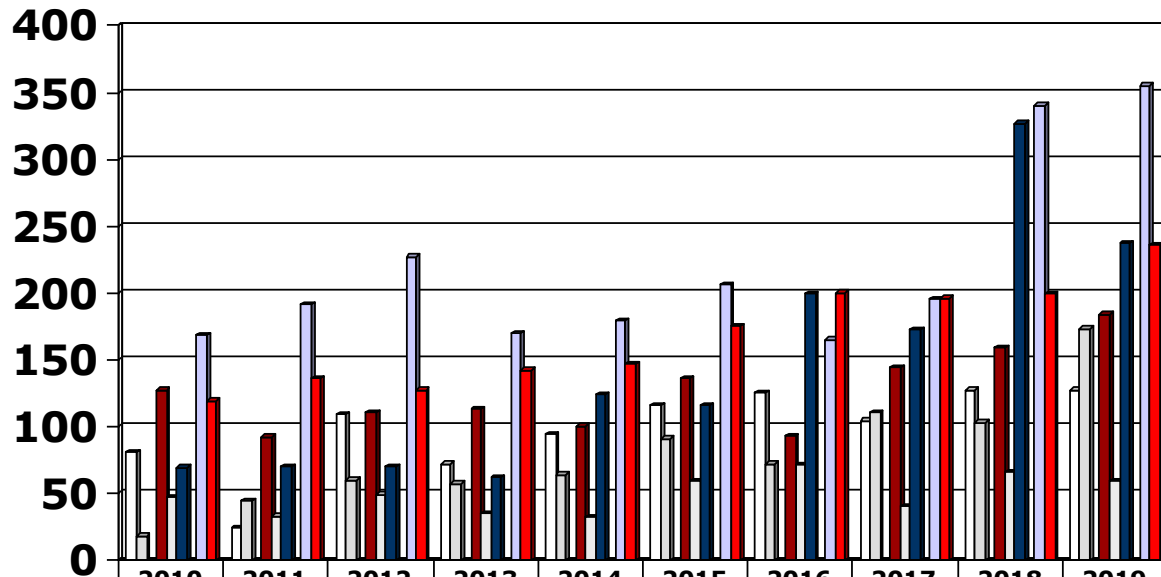


Output 4-Year Programme (2010 - 2019) All Institutions



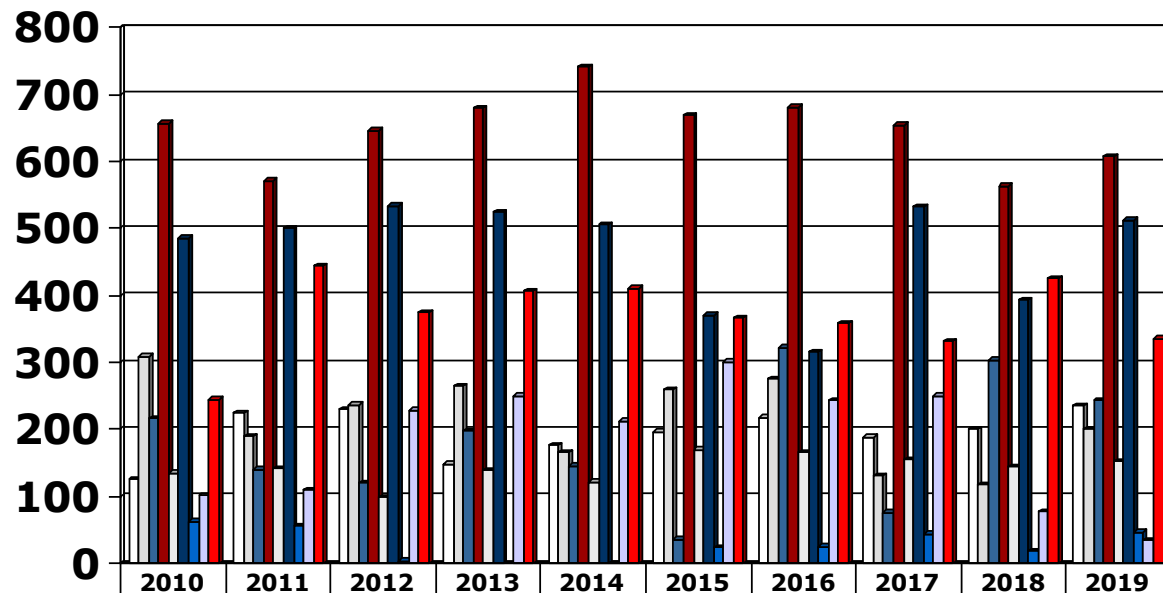
	2010	2011	2012	2013	2014	2015	2016	2017	2018	2019
□ Limpopo	207	248	339	220	271	312	343	292	327	362
□ North West	327	234	297	322	230	350	347	240	221	373
■ Mpumulanga	216	140	120	197	145	36	322	76	304	243
■ Gauteng	784	663	757	793	842	806	774	798	722	791
□ Free State	182	174	147	174	153	228	236	195	210	211
■ KwaZulu Natal	555	570	604	586	630	486	515	705	720	749
■ Northern Cape	62	56	3	0	0	24	25	44	18	46
□ Western Cape	269	301	456	420	392	507	408	445	417	389
■ Eastern Cape	364	580	502	549	558	542	558	527	625	572

Output 4-Year Programme (2010 - 2019) Universities



	2010	2011	2012	2013	2014	2015	2016	2017	2018	2019
□ Limpopo	81	24	109	72	94	116	125	104	127	127
□ North West	18	44	60	57	64	91	72	110	103	173
■ Mpumulanga										
■ Gauteng	127	92	110	113	100	136	93	144	159	184
□ Free State	47	33	49	35	32	59	71	40	66	59
■ KwaZulu Natal	69	70	70	62	124	116	199	172	327	237
■ Northern Cape										
□ Western Cape	168	191	227	170	179	206	165	195	340	355
■ Eastern Cape	119	136	127	142	147	175	200	196	199	236

Output 4-Year Programme (2010 - 2019) Nursing Colleges



	2010	2011	2012	2013	2014	2015	2016	2017	2018	2019
□ Limpopo	126	224	230	148	177	196	218	188	200	235
□ North West	309	190	237	265	166	259	275	130	118	200
■ Mpumulanga	216	140	120	197	145	36	322	76	304	243
■ Gauteng	657	571	647	680	742	670	681	654	563	607
□ Free State	135	141	98	139	121	169	165	155	144	152
■ KwaZulu Natal	486	500	534	524	506	370	316	533	393	512
■ Northern Cape	62	56	3		0	24	25	44	18	46
□ Western Cape	101	110	229	250	213	301	243	250	77	34
■ Eastern Cape	245	444	375	407	411	367	358	331	426	336