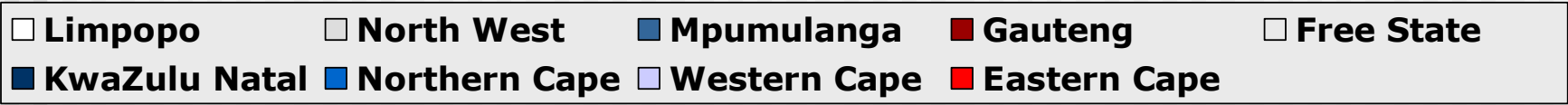
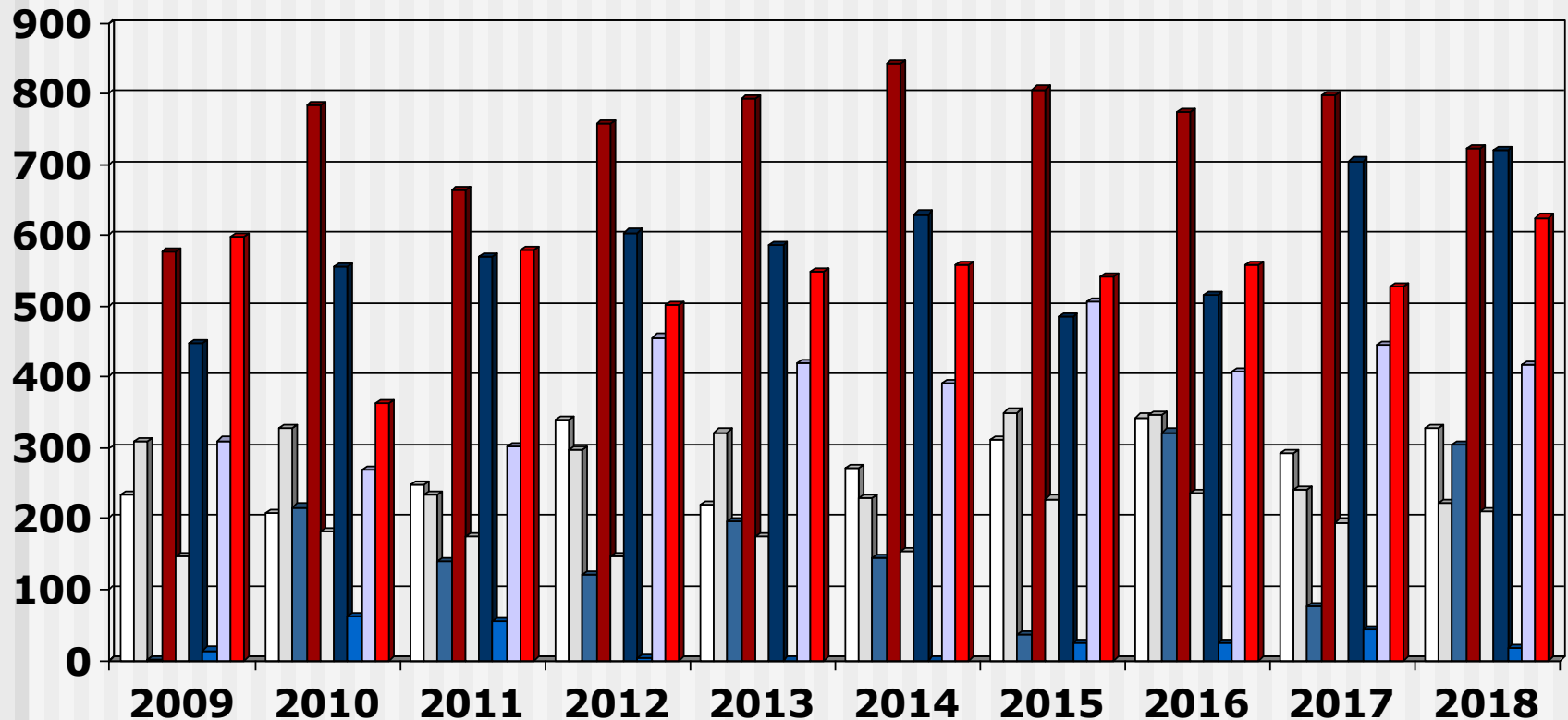


# Output 4-Year Programme (2009 - 2018) Overview

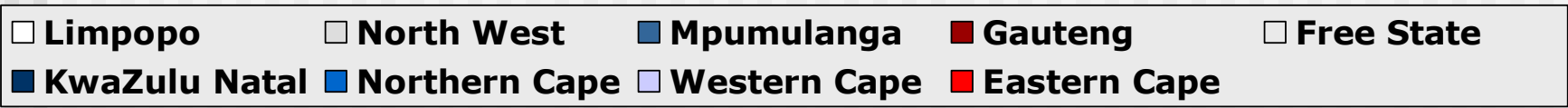
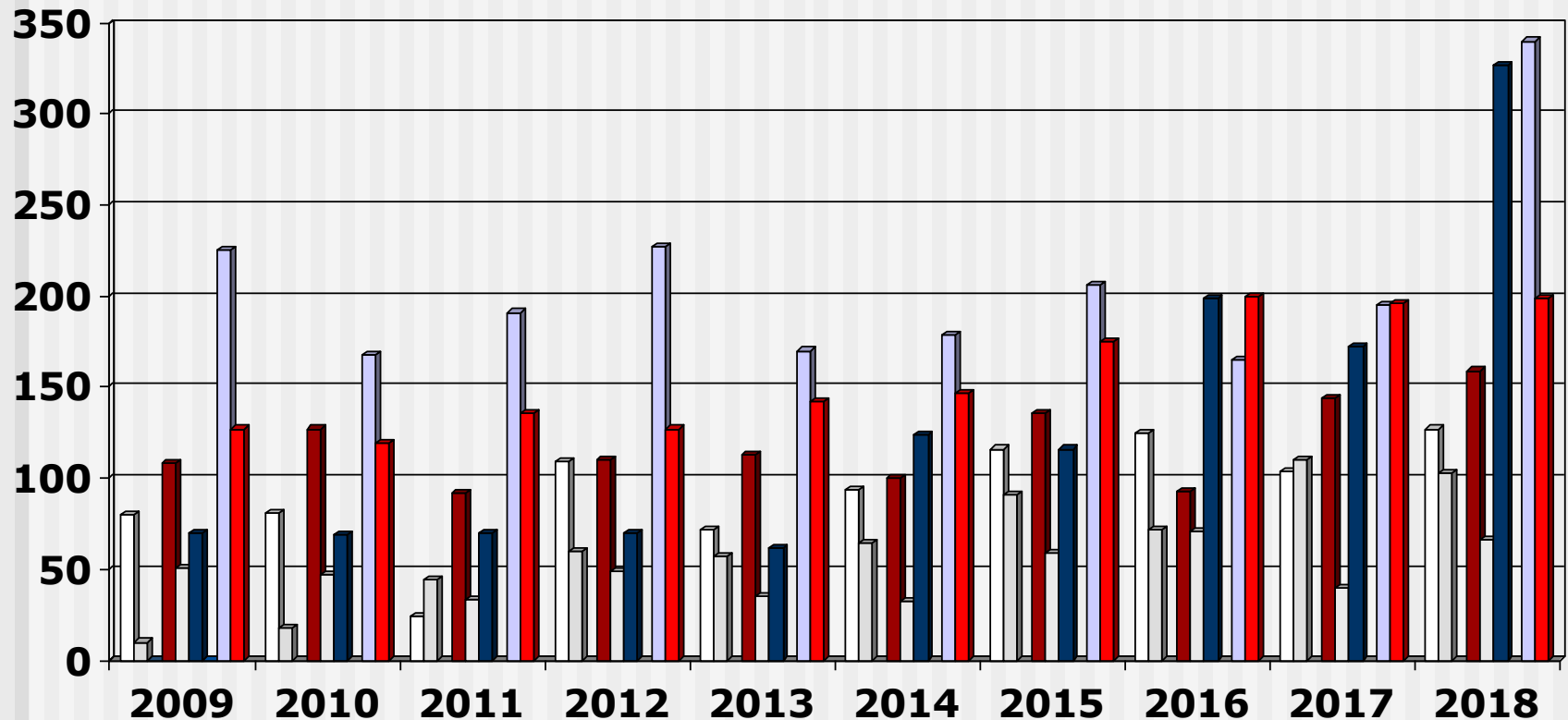
---

- These slides show the output of Nursing Education Institutions (Nursing Colleges and Universities) providing the 4-year programme leading to registration as a Nurse (General, Psychiatric and Community) and Midwife for the years 2009 - 2018
- Each slide is presented twice: first all slides are shown without data tables and then the slides are repeated with full data tables
- For further information, please contact:
  - S A Nursing Council:  
Private Bag X132, Pretoria, 0001, Republic of South Africa
  - Phone: 012 420-1000
  - Fax: 012 343-5400
  - E-mail: [customerservice@sanc.co.za](mailto:customerservice@sanc.co.za)
  - Website: [www.sanc.co.za](http://www.sanc.co.za)

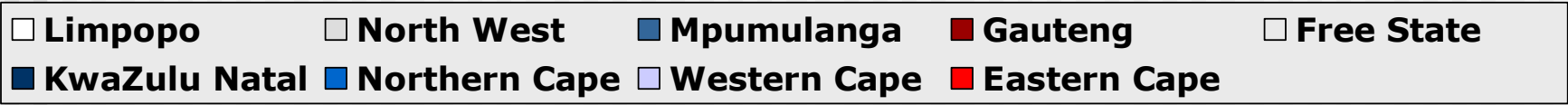
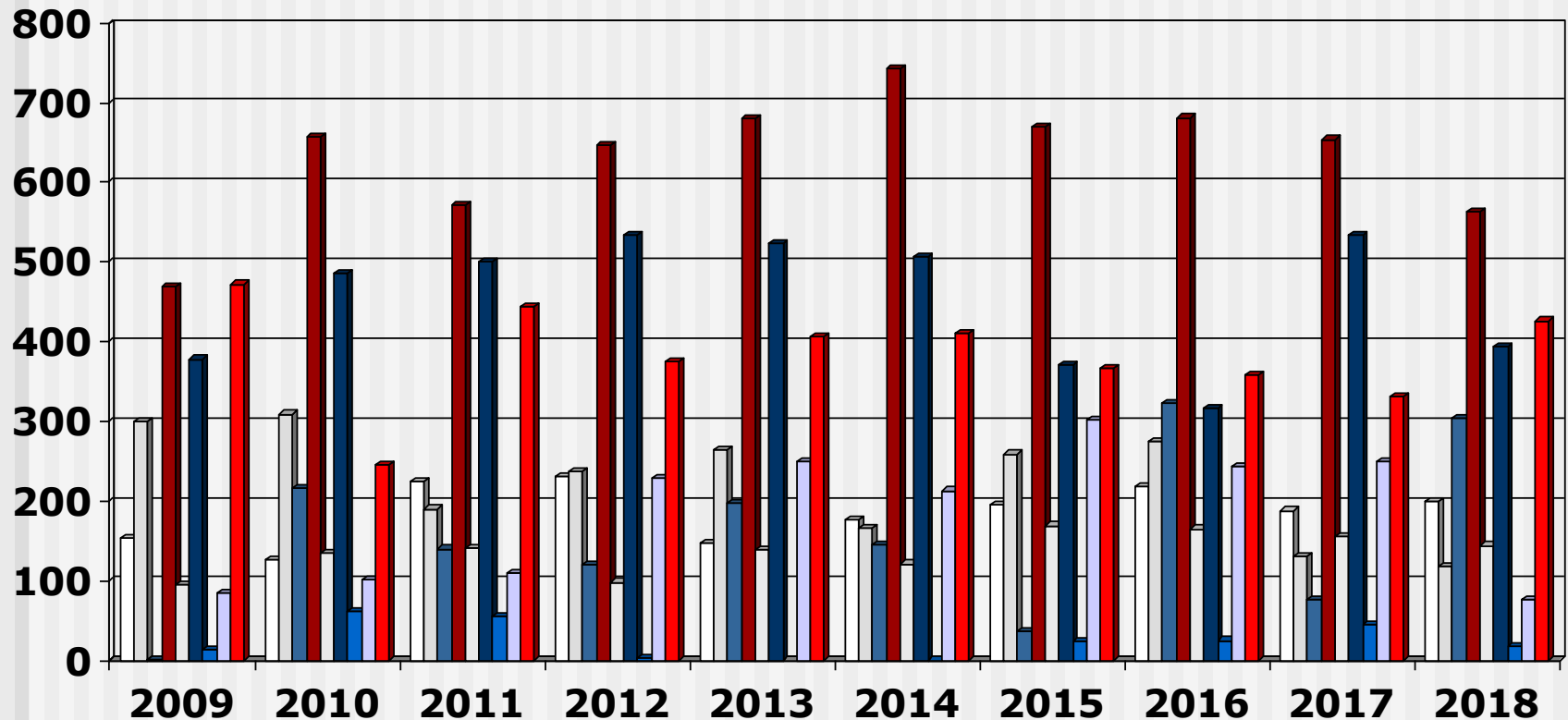
# Output 4-Year Programme (2009 - 2018) All Institutions



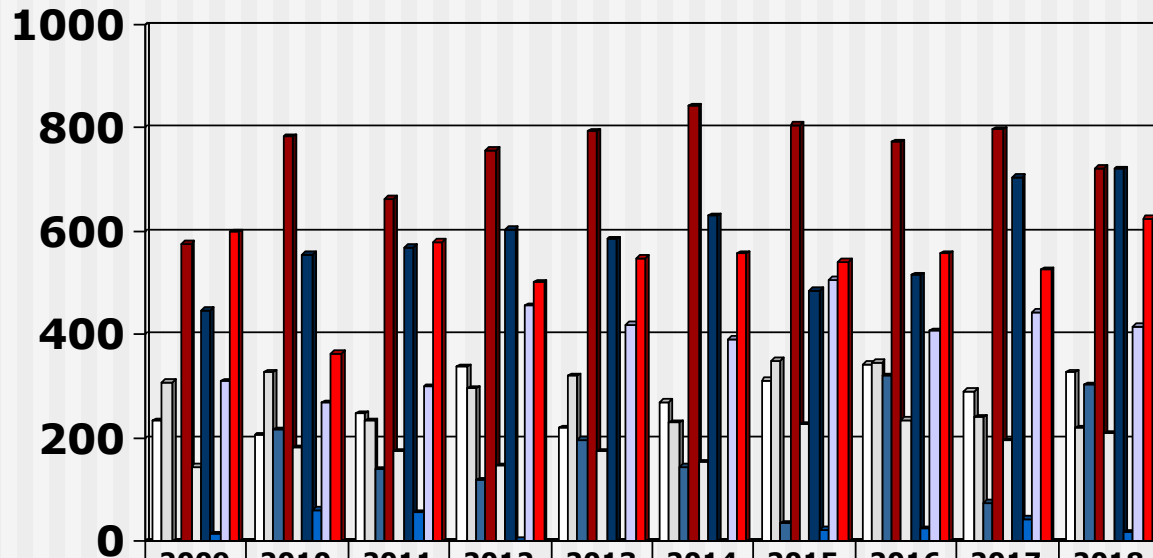
# Output 4-Year Programme (2009 - 2018) Universities



# Output 4-Year Programme (2009 - 2018) Nursing Colleges

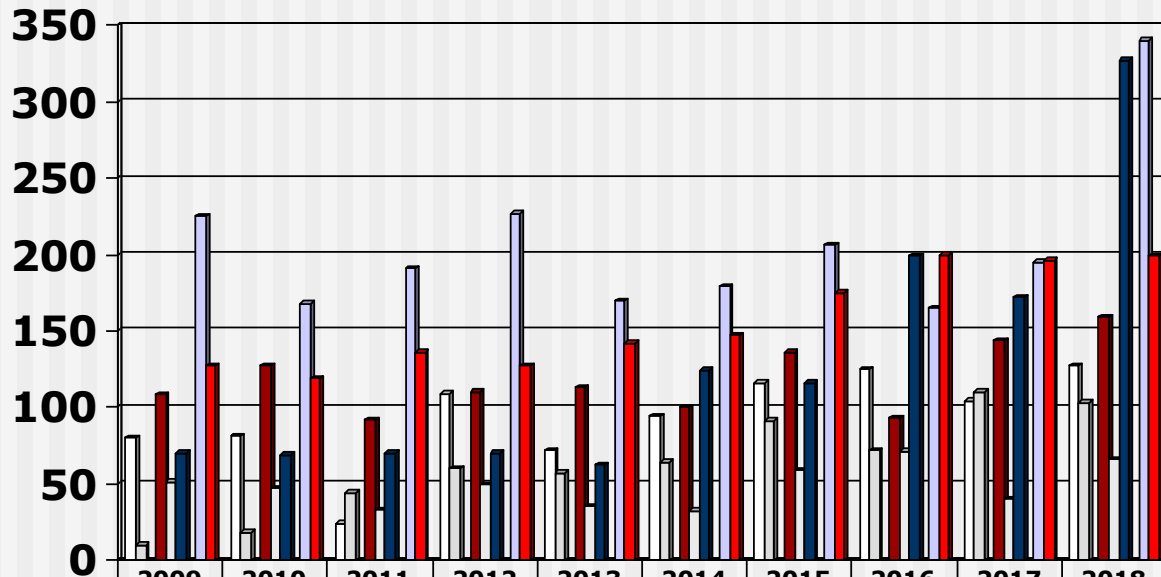


# Output 4-Year Programme (2009 - 2018) All Institutions



	2009	2010	2011	2012	2013	2014	2015	2016	2017	2018
□ Limpopo	234	207	248	339	220	271	312	343	292	327
□ North West	309	327	234	297	322	230	350	347	240	221
■ Mpumulanga	1	216	140	120	197	145	36	322	76	304
■ Gauteng	577	784	663	757	793	842	806	774	798	722
□ Free State	146	182	174	147	174	153	228	236	195	210
■ KwaZulu Natal	448	555	570	604	586	630	486	515	705	720
■ Northern Cape	14	62	56	3	0	0	24	25	44	18
□ Western Cape	310	269	301	456	420	392	507	408	445	417
■ Eastern Cape	599	364	580	502	549	558	542	558	527	625

# Output 4-Year Programme (2009 - 2018) Universities



	2009	2010	2011	2012	2013	2014	2015	2016	2017	2018
□ Limpopo	80	81	24	109	72	94	116	125	104	127
□ North West	10	18	44	60	57	64	91	72	110	103
■ Mpumulanga	0									
■ Gauteng	108	127	92	110	113	100	136	93	144	159
□ Free State	51	47	33	49	35	32	59	71	40	66
■ KwaZulu Natal	70	69	70	70	62	124	116	199	172	327
■ Northern Cape	0									
□ Western Cape	225	168	191	227	170	179	206	165	195	340
■ Eastern Cape	127	119	136	127	142	147	175	200	196	199

# Output 4-Year Programme (2009 - 2018) Nursing Colleges

