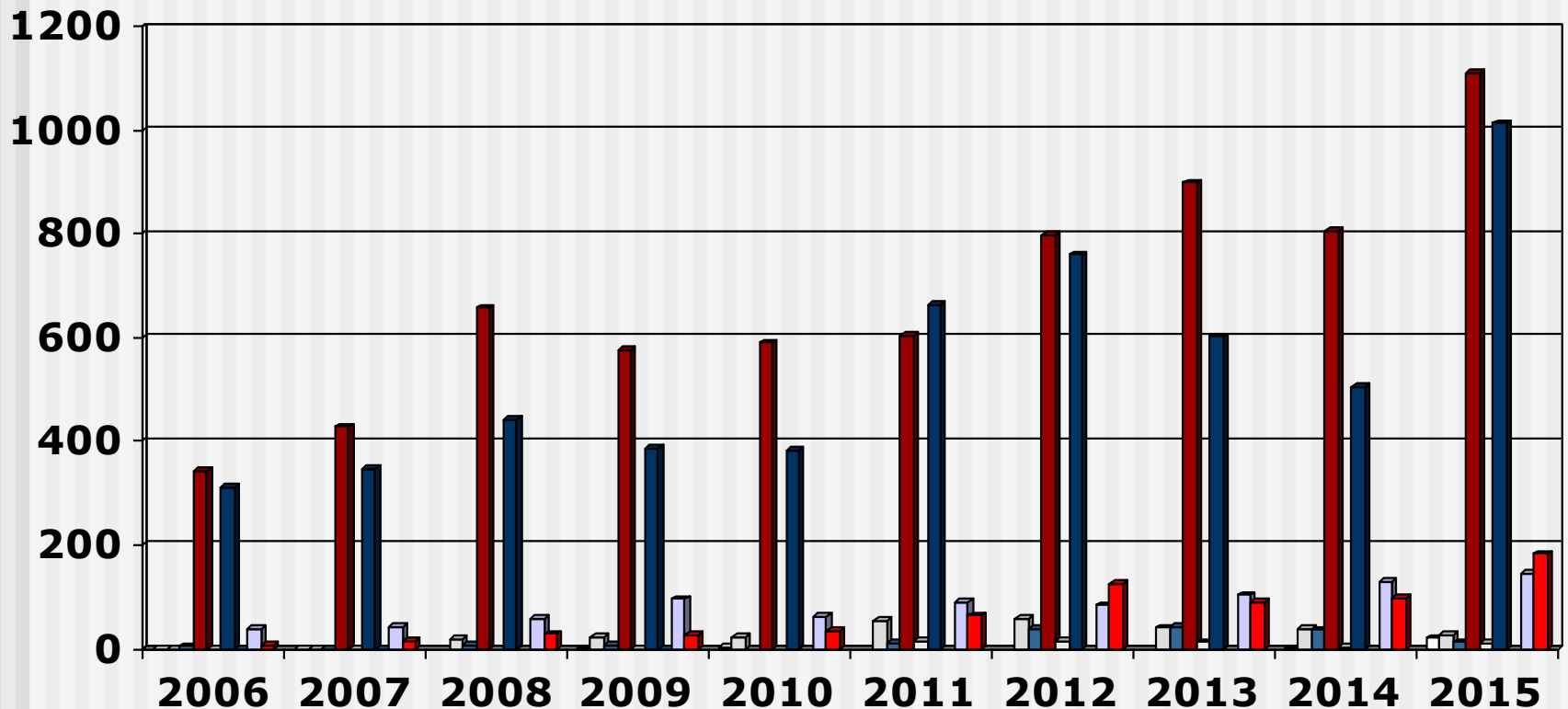


Output Bridging Programme (2006 - 2015) Overview

- These slides show the output of Nursing Education Institutions (Public and Private Institutions) providing the bridging programme leading to registration as a General Nurse or as a Psychiatric Nurse for the years 2006 - 2015
- Each slide is presented twice: first all slides are shown without data tables and then the slides are repeated with full data tables
- For further information, please contact:
 - S A Nursing Council:
Private Bag X132, Pretoria, 0001, Republic of South Africa
 - Phone: 012 420-1000
 - Fax: 012 343-5400
 - E-mail: registrar@sanc.co.za
 - Website: www.sanc.co.za

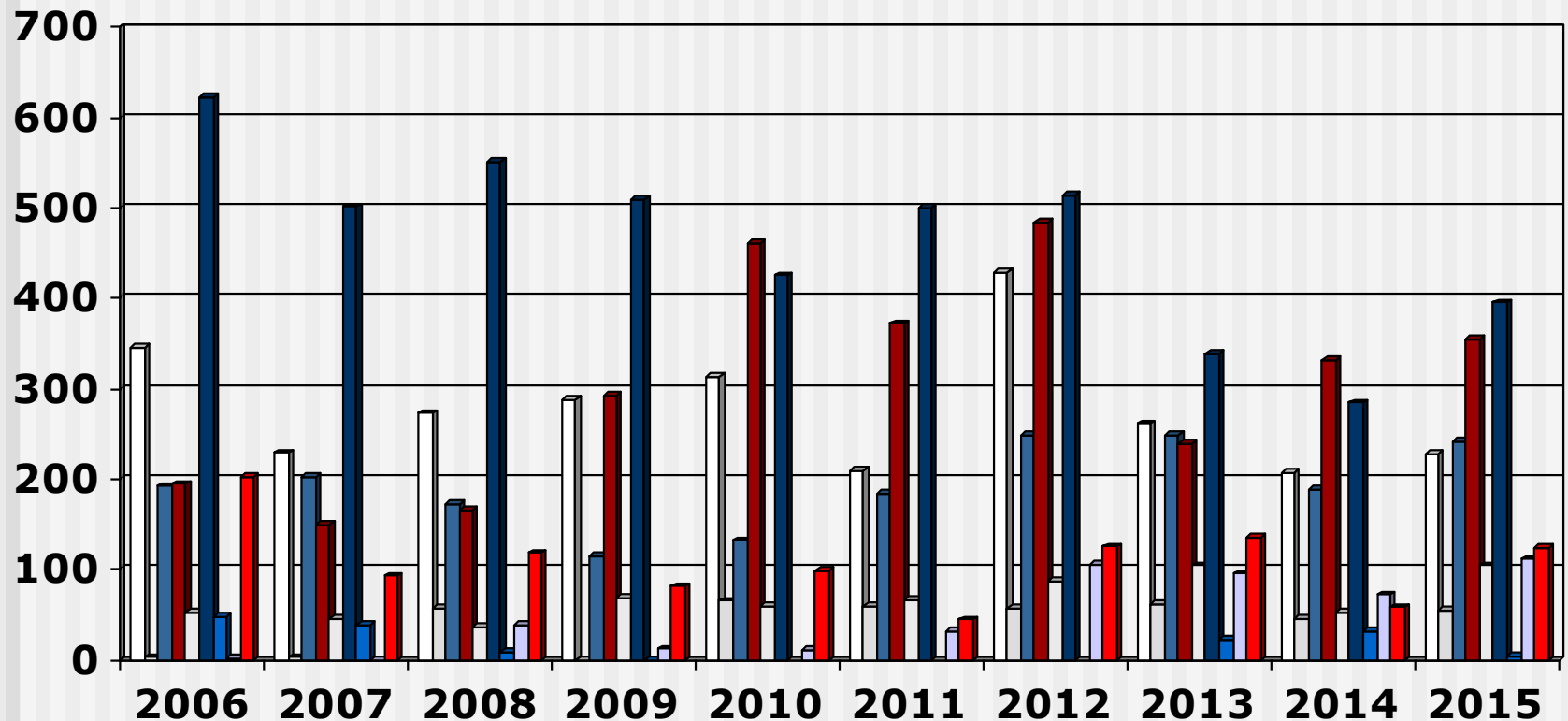
Output Bridging Programme (2006 - 2015) Private Institutions



Limpopo
 North West
 Mpumulanga
 Gauteng
 Free State

KwaZulu Natal
 Northern Cape
 Western Cape
 Eastern Cape

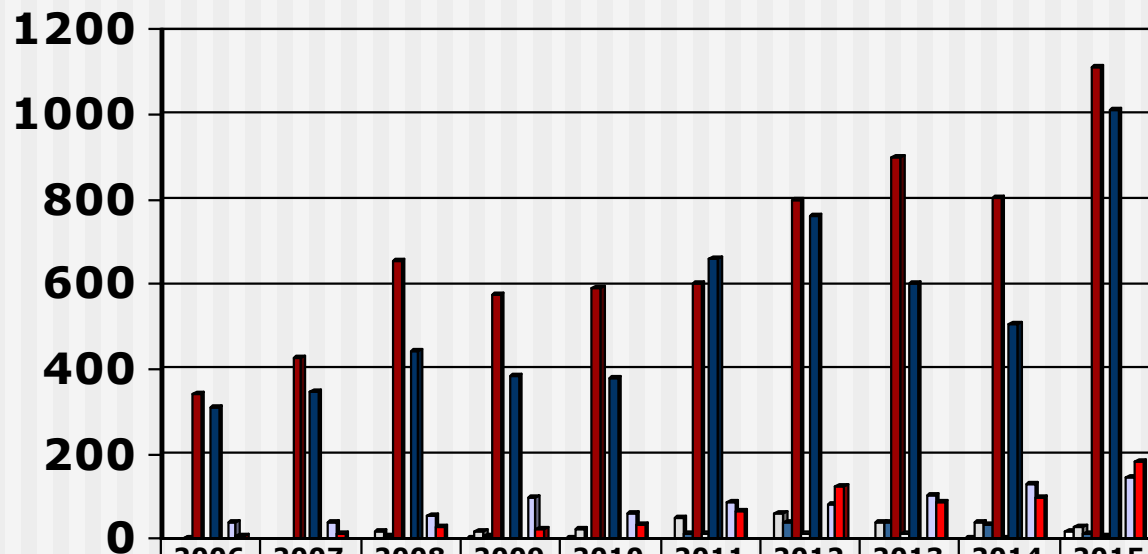
Output Bridging Programme (2006 - 2015) Public Institutions



Limpopo
 North West
 Mpumulanga
 Gauteng
 Free State

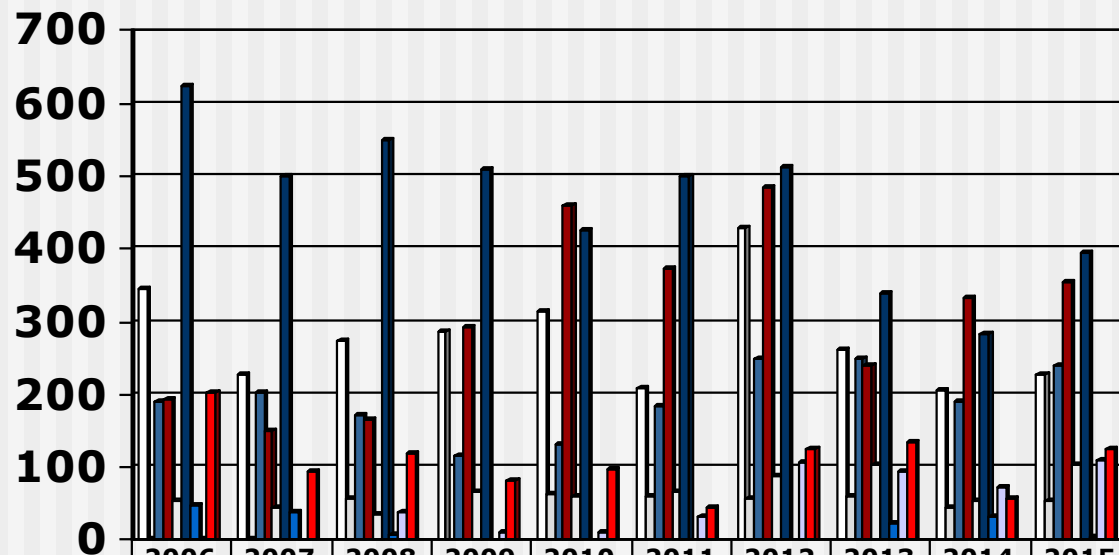
 KwaZulu Natal
 Northern Cape
 Western Cape
 Eastern Cape

Output Bridging Programme (2006 - 2015) Private Institutions



	2006	2007	2008	2009	2010	2011	2012	2013	2014	2015
□ Limpopo	0	0		1	2				1	20
□ North West	0	0	19	21	23	53	59	40	39	27
■ Mpumulanga	5	0	6	6		11	39	42	36	12
■ Gauteng	343	428	657	575	590	605	799	899	805	1110
□ Free State	0	0		0		15	15	12	3	10
■ KwaZulu Natal	312	348	442	385	382	662	760	602	506	1014
■ Northern Cape	0	0		0						
□ Western Cape	38	42	57	96	62	89	84	103	130	146
■ Eastern Cape	6	14	28	25	33	64	125	89	97	183
■ 3-D Column 10										

Output Bridging Programme (2006 - 2015) Public Institutions



	2006	2007	2008	2009	2010	2011	2012	2013	2014	2015
□ Limpopo	345	229	273	288	313	209	429	261	207	227
□ North West	3	3	57	0	65	59	57	61	45	54
■ Mpumalanga	192	202	172	115	132	184	249	249	189	241
■ Gauteng	194	150	166	293	460	372	484	239	332	354
□ Free State	53	45	36	68	60	66	87	104	53	104
■ KwaZulu Natal	623	501	550	509	425	500	514	338	284	395
■ Northern Cape	47	38	8	0				22	32	4
□ Western Cape	1	0	39	12	10	31	106	95	72	111
■ Eastern Cape	202	93	118	81	98	44	125	135	58	124
■ 3-D Column 10										