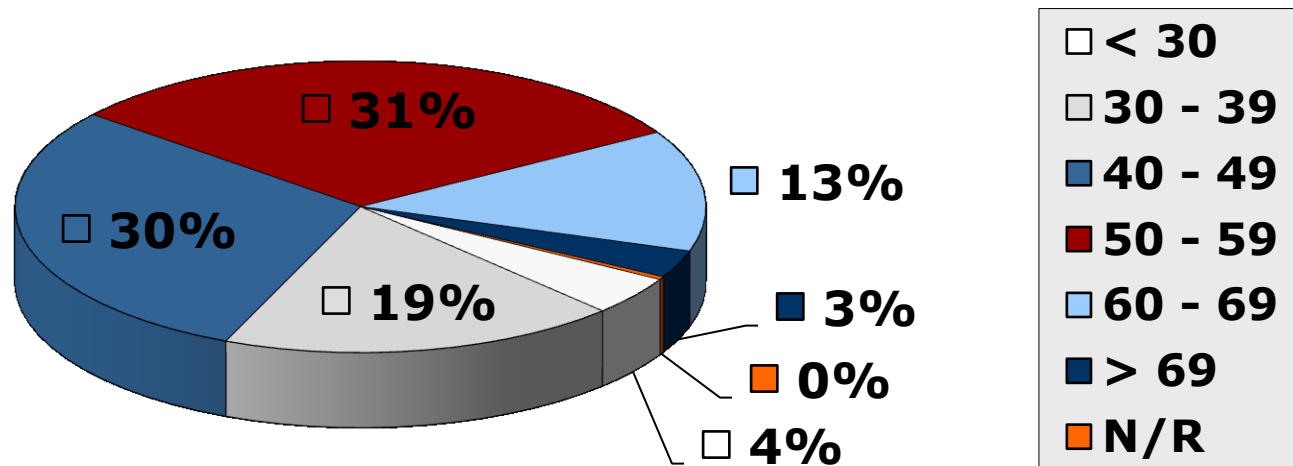
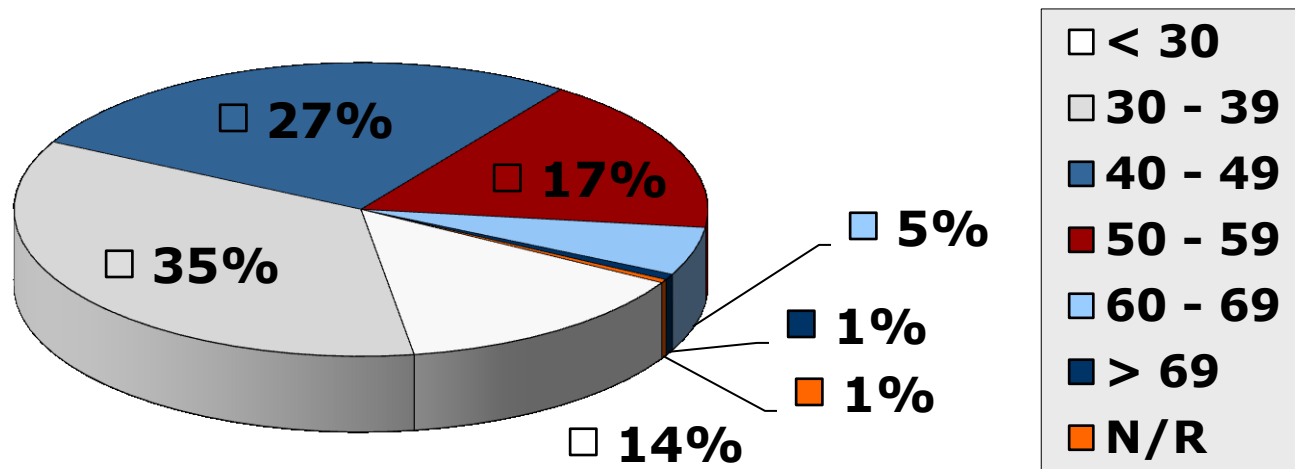


# Age Distribution: Registered Nurses/Midwives



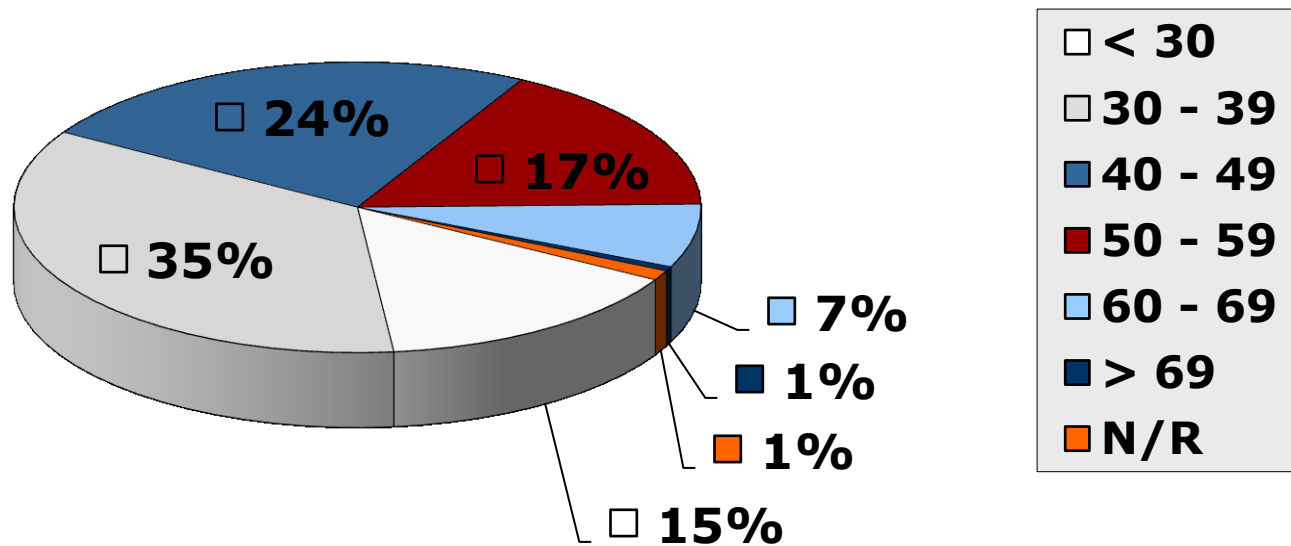
**As at 2012-12-31**

# Age Distribution: Enrolled Nurses/Midwives



**As at 2012-12-31**

# Age Distribution: Enrolled Nursing Auxiliaries



**As at 2012-12-31**

# Age Distribution (table):

## All Nurses (as at 2012-12-31)

Age Group	RN / RM	EN / EM	ENA
< 25	89	926	1543
25 - 29	5289	7424	8338
30 - 34	9779	10477	12102
35 - 39	13406	10109	11212
40 - 44	17285	8732	9120
45 - 49	19351	7217	6899
50 -54	21116	5747	5964
55 - 59	16820	4356	5070
60 - 64	10535	2274	3383
65 - 69	6156	855	1278
> 69	3802	372	329
Not Reported	417	233	731
<b>TOTAL</b>	<b>124045</b>	<b>58722</b>	<b>65969</b>

# Age Analysis: Students

(Who commenced for the first time in 2012)

Course Name	Average Age	Minimum Age	Maximum Age	Count (persons)
4-year N+M	25	17	57	4338
Bridging (Gen.)	35	20	61	2377
Psychiatric N	46	30	61	93
Midwifery	44	23	63	1135
Enrolled (Gen.)	30	17	68	8287
Enrolled (Care of Aged)	44	29	58	25
Enrolled (Comm.)	36	19	61	238
Enrolled (Psy.)	40	26	58	40
Nursing Auxiliary	30	17	61	5239
CHTC (Primary Health)	43	25	62	330
<b>OVERALL</b>	<b>31</b>	<b>17</b>	<b>68</b>	<b>22102</b>

# Age Analysis: Students

## (Who completed training in 2012)

Course Name	Average Age	Minimum Age	Maximum Age	Count (persons)
4-year N+M	30	20	56	2966
Bridging (Gen.)	39	22	66	2962
Psychiatric N	45	31	58	56
Midwifery	44	26	64	838
Enrolled (Gen.)	32	19	62	7114
Enrolled (Comm.)	38	20	59	244
Enrolled (Psy.)	41	31	53	31
Nursing Auxiliary	30	17	68	5232
CHTC (Primary Health)	43	29	61	312
<b>OVERALL</b>	<b>33</b>	<b>17</b>	<b>68</b>	<b>19755</b>