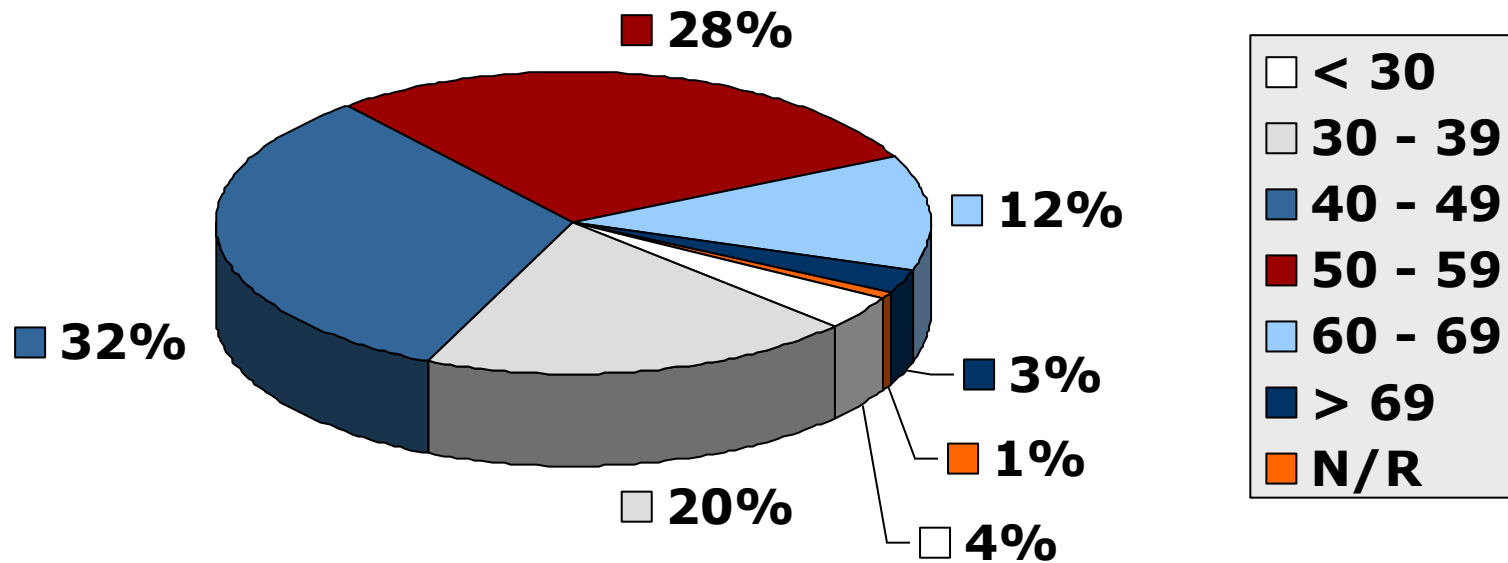
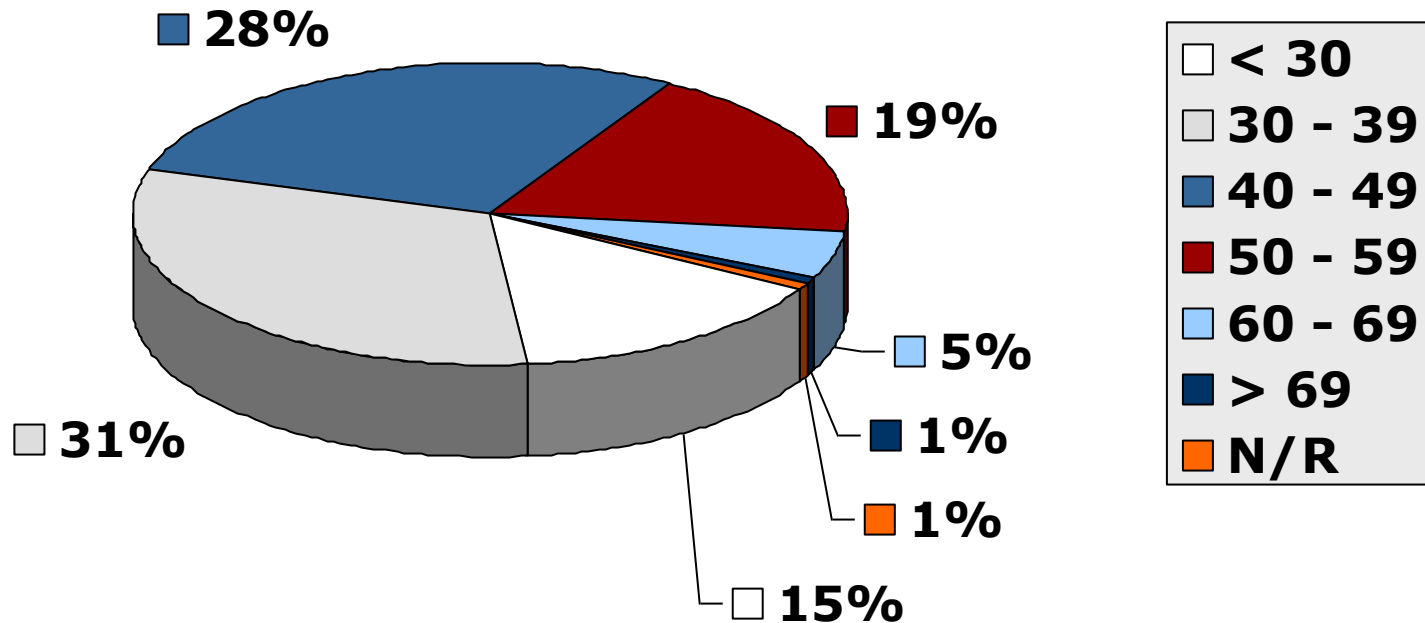


# Age Distribution: Registered Nurses/Midwives



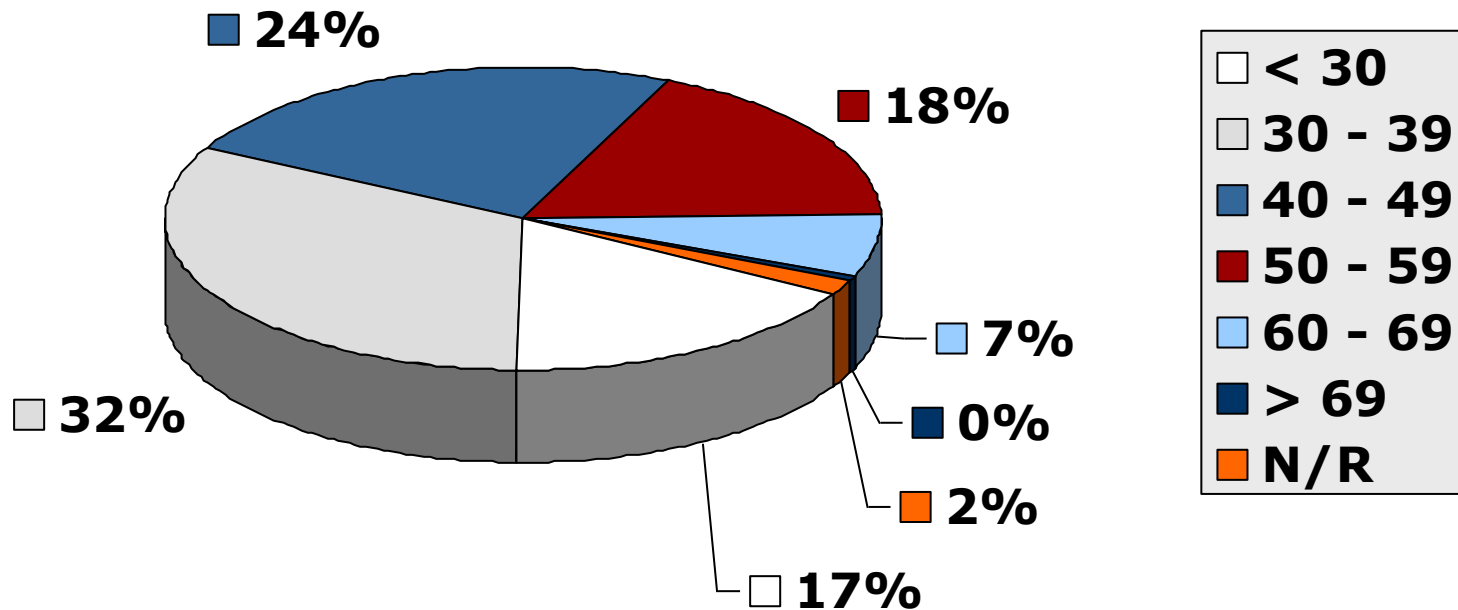
**As at 2009-12-31**

# Age Distribution: Enrolled Nurses/Midwives



**As at 2009-12-31**

# Age Distribution: Enrolled Nursing Auxiliaries



**As at 2009-12-31**

# Age Distribution (table):

## All Nurses (as at 2009-12-31)

<b>Age Group</b>	<b>RN / RM</b>	<b>EN / EM</b>	<b>ENA</b>
< 25	69	795	1530
25 – 29	3895	6361	9093
30 – 34	7926	7505	10456
35 – 39	14030	7653	9781
40 – 44	16346	7111	7932
45 – 49	19942	6589	7047
50 -54	18585	5446	6290
55 – 59	13175	3546	4834
60 – 64	8598	1681	3025
65 - 69	4974	748	1036
> 69	2902	282	298
Not Reported	857	361	1118
<b>TOTAL</b>	<b>111299</b>	<b>48078</b>	<b>62440</b>

# Age Analysis: Students/Pupils

(Who commenced for the first time in 2009)

<b>Course Name</b>	<b>Average Age</b>	<b>Minimum Age</b>	<b>Maximum Age</b>	<b>Count (persons)</b>
4-year N+M	26	17	55	4299
Bridging (Gen.)	37	19	86	4536
Psychiatric N	43	28	60	113
Midwifery	43	25	62	1331
Enrolled (Gen.)	31	17	62	10241
Enrolled (Comm.)	36	19	59	358
Enrolled (Psy.)	37	26	55	72
Nursing Auxiliary	29	17	62	4769
CHTC (Primary Health)	42	23	62	369
<b>OVERALL</b>	32	17	86	26088

# Age Analysis: Students/Pupils

(Who completed training in 2009)

<b>Course Name</b>	<b>Average Age</b>	<b>Minimum Age</b>	<b>Maximum Age</b>	<b>Count (persons)</b>
4-year N+M	30	21	59	2635
Bridging (Gen.)	39	21	62	2463
Psychiatric N	46	33	62	56
Midwifery	44	26	63	1249
Enrolled (Gen.)	32	19	64	7157
Enrolled (Comm.)	36	21	63	239
Enrolled (Psy.)	37	27	53	49
Nursing Auxiliary	30	18	63	5708
CHTC (Primary Health)	42	29	58	255
<b>OVERALL</b>	33	18	64	19811