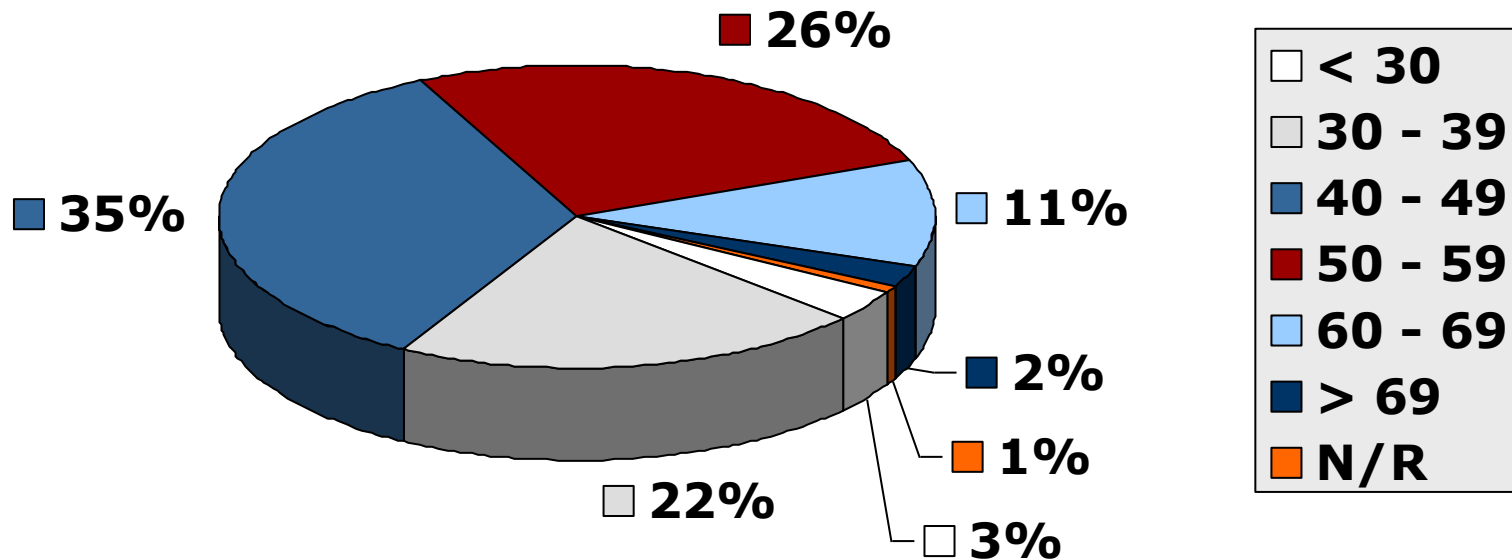
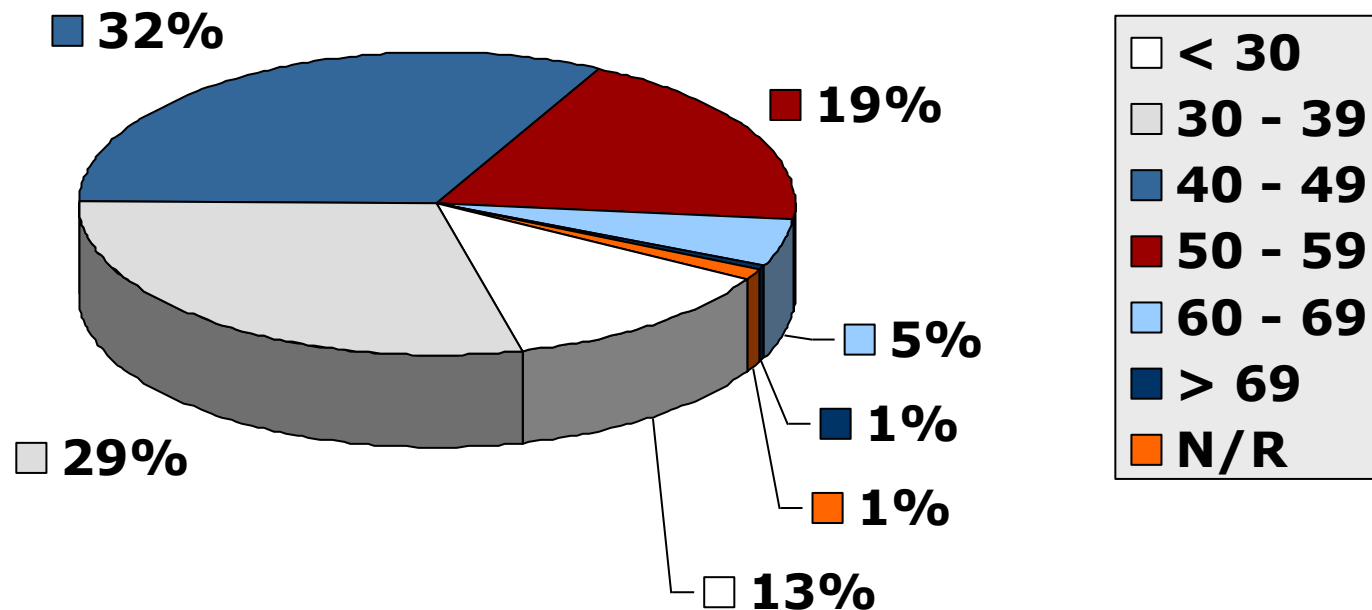


# Age Distribution: Registered Nurses/Midwives



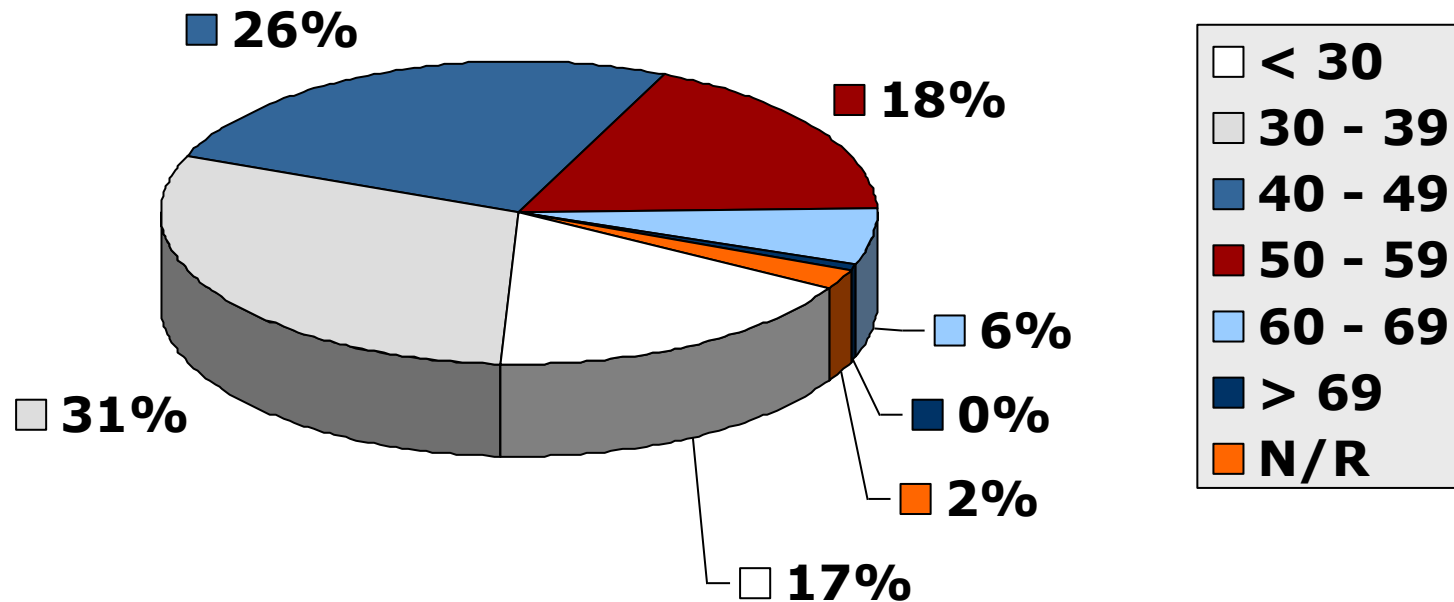
**As at 2007-12-31**

# Age Distribution: Enrolled Nurses/Midwives



**As at 2007-12-31**

# Age Distribution: Enrolled Nursing Auxiliaries



**As at 2007-12-31**

# Age Distribution (table):

## All Nurses (as at 2007-12-31)

<b>Age Group</b>	<b>RN / RM</b>	<b>EN / EM</b>	<b>ENA</b>
< 25	84	661	1657
25 – 29	3264	4574	8738
30 – 34	8552	5567	9402
35 – 39	13778	6238	8632
40 – 44	16718	6768	7767
45 – 49	19270	6235	7482
50 -54	16173	4969	6204
55 – 59	11002	2839	4459
60 – 64	7652	1426	2745
65 - 69	4098	651	872
> 69	2232	210	218
Not Reported	969	444	1398
<b>TOTAL</b>	<b>103792</b>	<b>40582</b>	<b>59574</b>

# Age Analysis: Students/Pupils

(Who commenced for the first time in 2007)

<b>Course Name</b>	<b>Average Age</b>	<b>Minimum Age</b>	<b>Maximum Age</b>	<b>Count (persons)</b>
4-year N+M	26	17	55	2608
Bridging (Gen.)	36	20	63	2734
Psychiatric N	43	33	56	101
Midwifery	43	25	60	894
Enrolled (Gen.)	30	17	65	5804
Enrolled (Comm.)	36	23	55	113
Enrolled (Psy.)	53	53	53	2
Nursing Auxiliary	28	17	66	5304
CHTC (Primary Health)	41	27	60	277
<b>OVERALL</b>	<b>31</b>	<b>17</b>	<b>66</b>	<b>17837</b>

# Age Analysis: Students/Pupils (Who completed training in 2007)

<b>Course Name</b>	<b>Average Age</b>	<b>Minimum Age</b>	<b>Maximum Age</b>	<b>Count (persons)</b>
4-year N+M	30	19	58	2025
Bridging (Gen.)	41	22	65	2347
Psychiatric N	45	36	57	38
Midwifery	44	29	62	1218
Enrolled (Gen.)	31	19	66	4725
Enrolled (Comm.)	40	21	55	66
Enrolled (Psy.)	45	35	53	16
Nursing Auxiliary	29	18	64	5418
CHTC (Primary Health)	41	27	62	158
Community N/Sc.	45	40	52	5
<b>OVERALL</b>	<b>33</b>	<b>18</b>	<b>66</b>	<b>16011</b>