

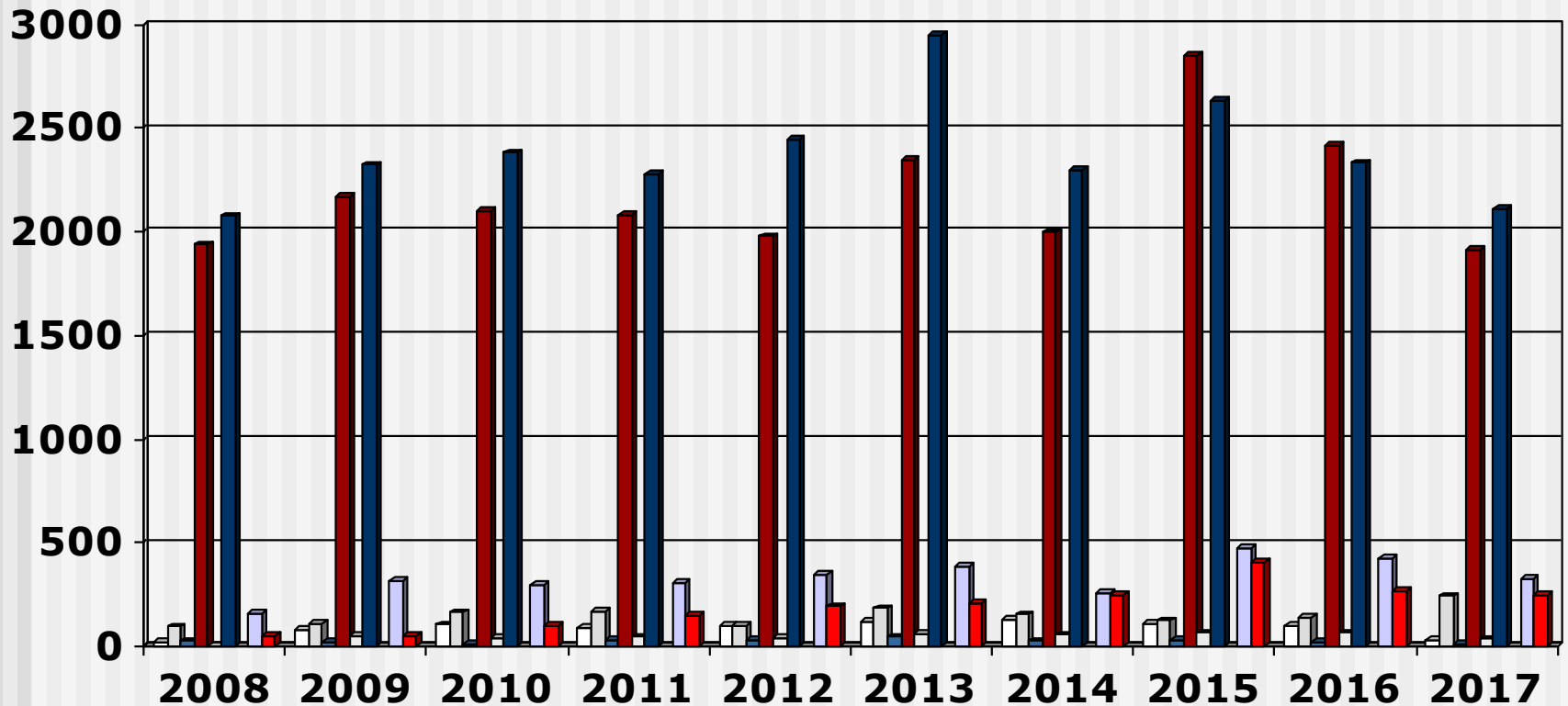
Output Pupil Nurses

(2008 - 2017) Overview

- These slides show the output of Nursing Education Institutions (Public and Private Institutions) providing the programme leading to enrolment as an Enrolled Nurse for the years 2008 - 2017
- Each slide is presented twice: first all slides are shown without data tables and then the slides are repeated with full data tables
- For further information, please contact:
 - S A Nursing Council:
Private Bag X132, Pretoria, 0001, Republic of South Africa
 - Phone: 012 420-1000
 - Fax: 012 343-5400
 - E-mail: registrar@sanc.co.za
 - Website: www.sanc.co.za

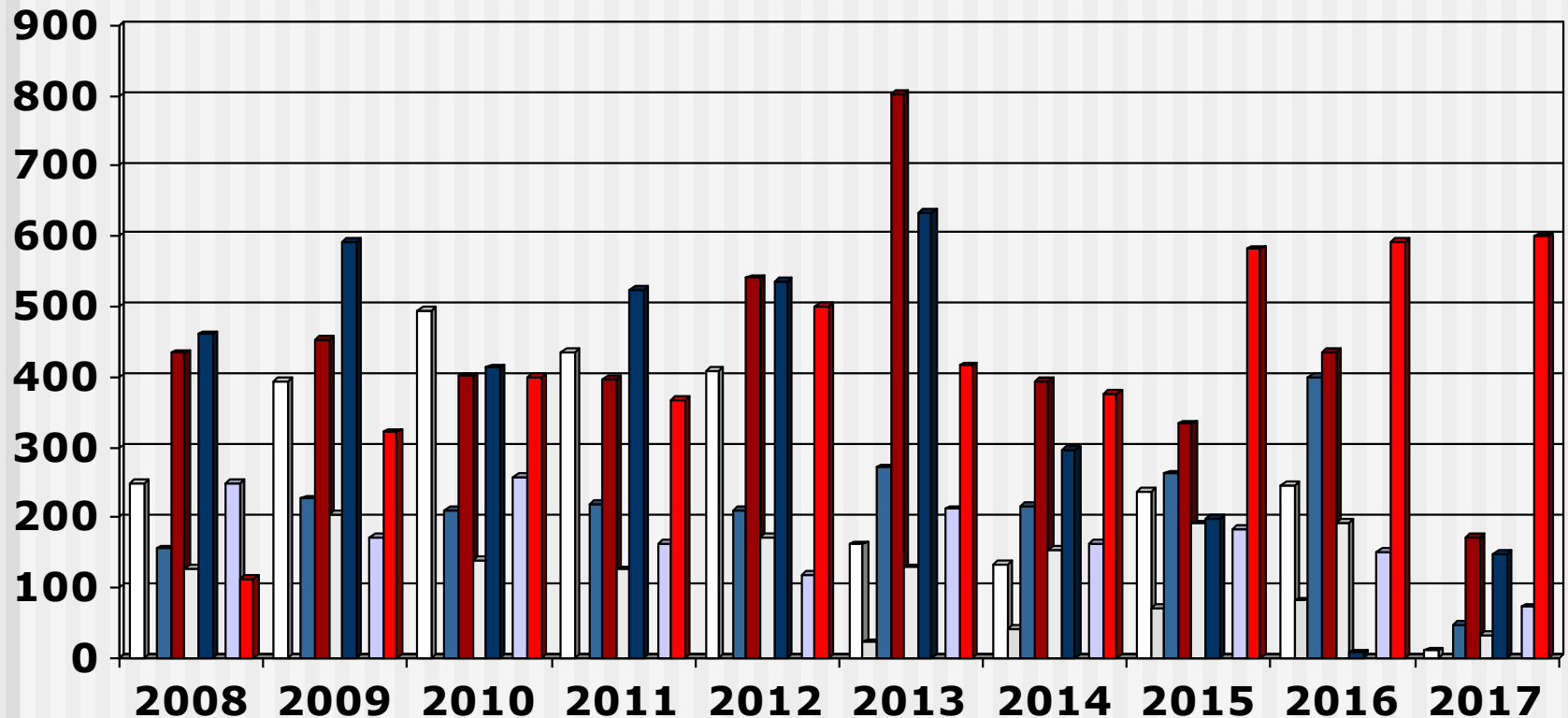
Output Pupil Nurses

(2008 - 2017) Private Institutions



Output Pupil Nurses

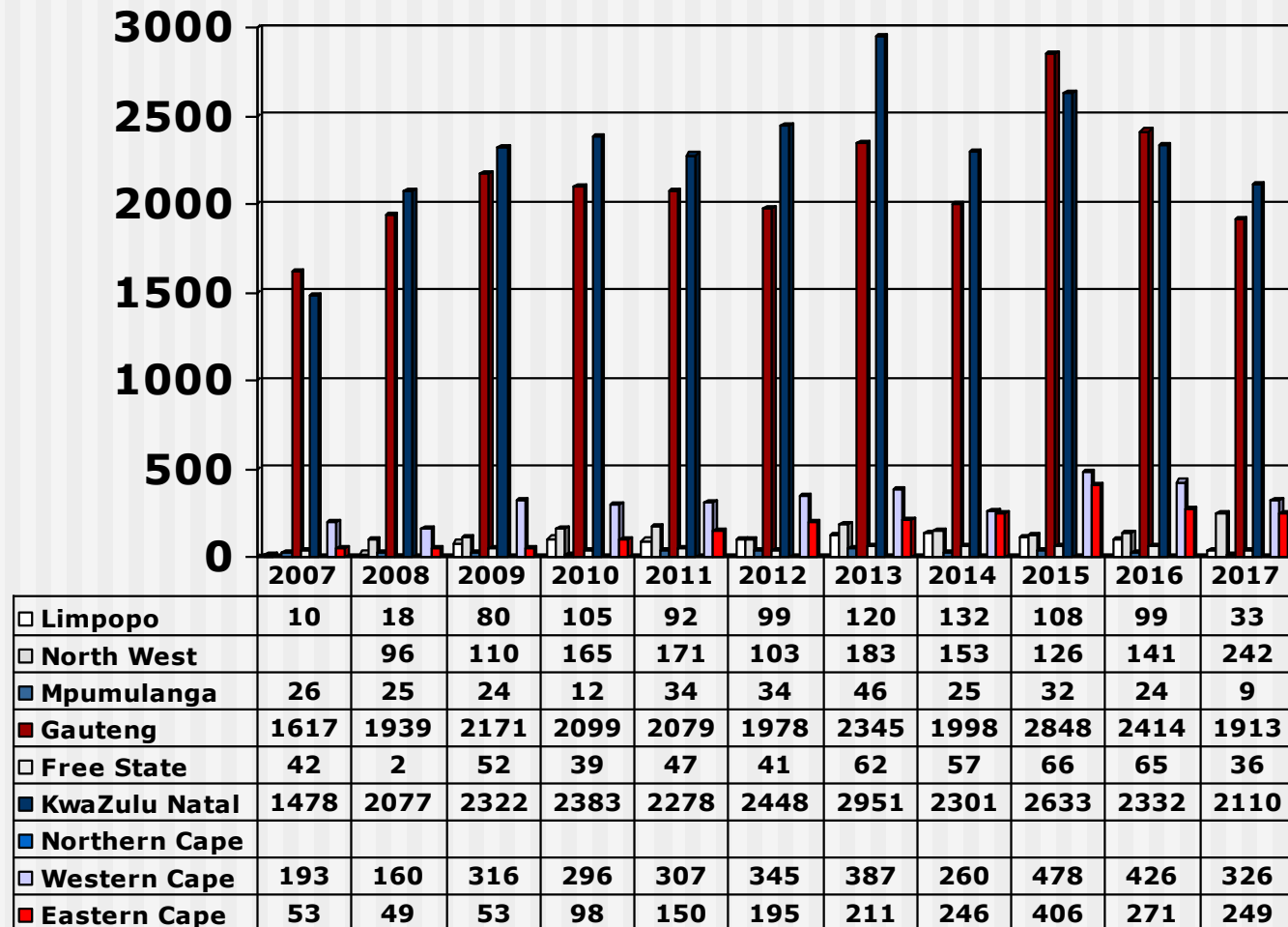
(2008 - 2017) Public Institutions



□ Limpopo □ North West ■ Mpumalanga ■ Gauteng □ Free State
■ KwaZulu Natal ■ Northern Cape □ Western Cape ■ Eastern Cape

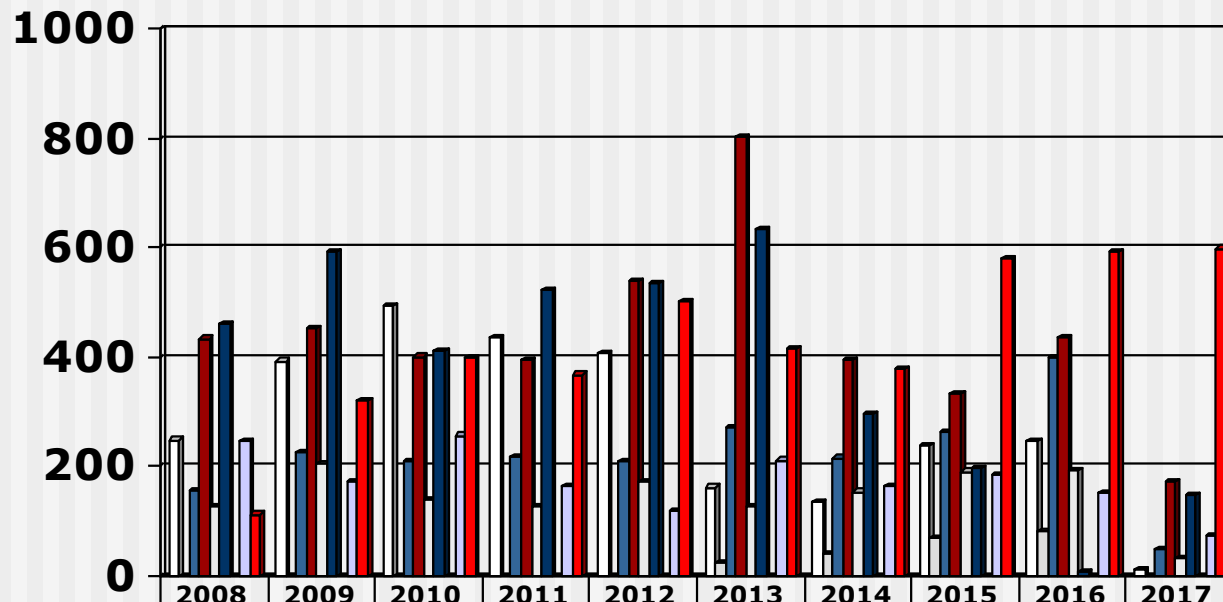
Output Pupil Nurses

(2008 - 2017) Private Institutions



Output Pupil Nurses

(2008 - 2017) Public Institutions



	2008	2009	2010	2011	2012	2013	2014	2015	2016	2017
□ Limpopo	249	393	494	436	409	162	134	237	246	11
□ North West		1				23	41	71	82	1
■ Mpumulanga	156	227	211	219	211	271	216	262	399	48
■ Gauteng	434	453	401	396	540	802	394	333	435	171
□ Free State	128	205	139	126	173	129	154	191	192	32
■ KwaZulu Natal	460	593	413	524	536	634	297	199	8	148
■ Northern Cape										
□ Western Cape	248	172	257	164	119	212	164	184	152	73
■ Eastern Cape	113	321	399	368	501	416	377	582	593	599