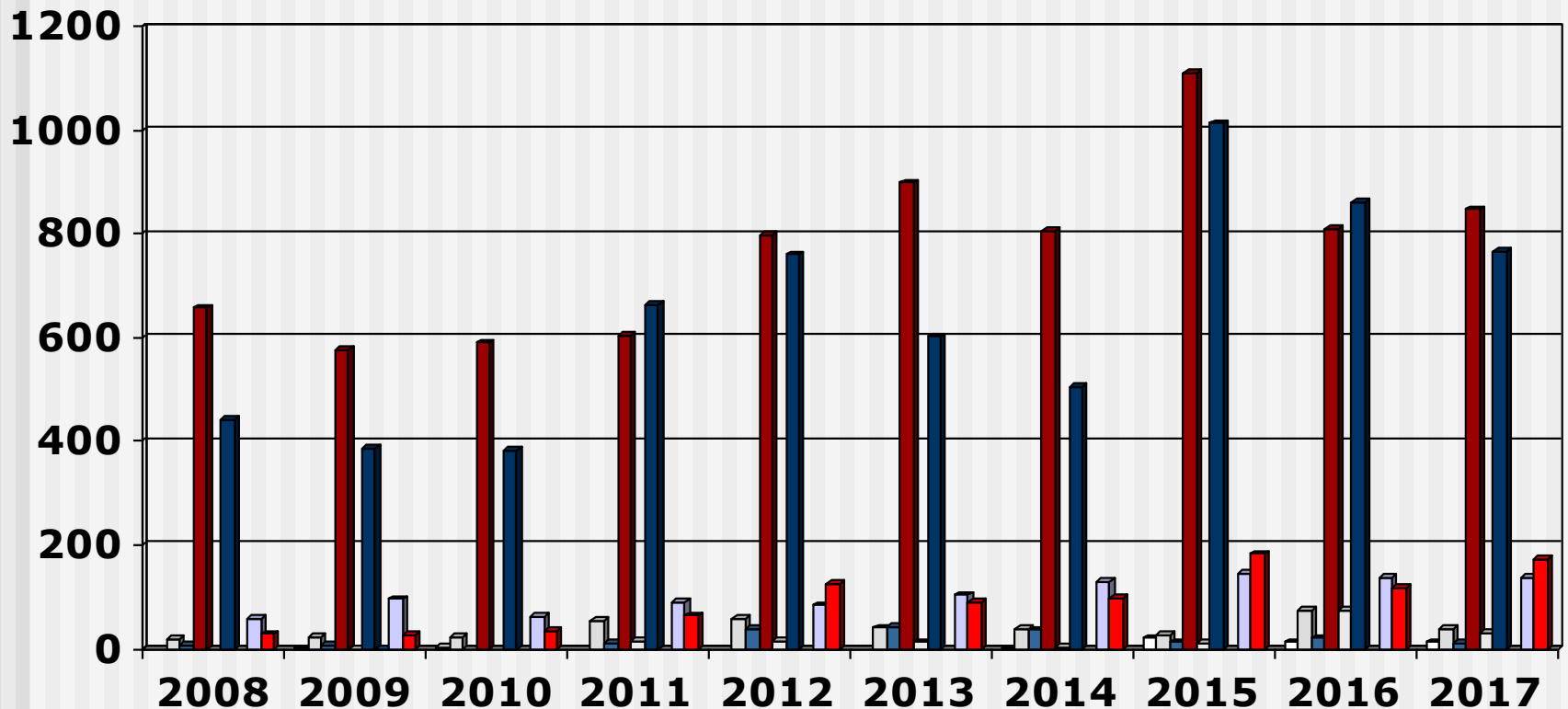


# Output Bridging Programme (2008 - 2017) Overview

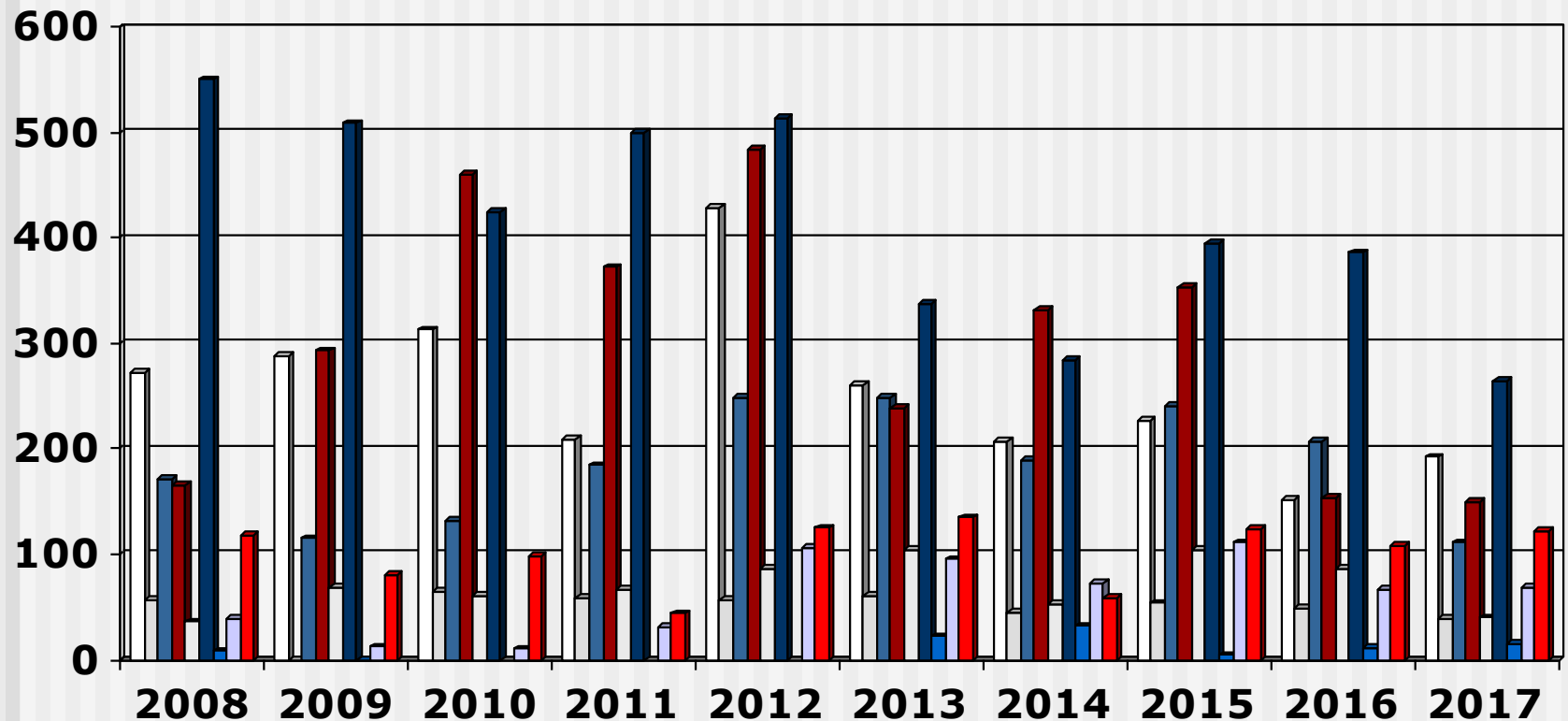
---

- These slides show the output of Nursing Education Institutions (Public and Private Institutions) providing the bridging programme leading to registration as a General Nurse or as a Psychiatric Nurse for the years 2008 - 2017
- Each slide is presented twice: first all slides are shown without data tables and then the slides are repeated with full data tables
- For further information, please contact:
  - S A Nursing Council:  
Private Bag X132, Pretoria, 0001, Republic of South Africa
  - Phone: 012 420-1000
  - Fax: 012 343-5400
  - E-mail: [registrar@sanc.co.za](mailto:registrar@sanc.co.za)
  - Website: [www.sanc.co.za](http://www.sanc.co.za)

# Output Bridging Programme (2008 - 2017) Private Institutions

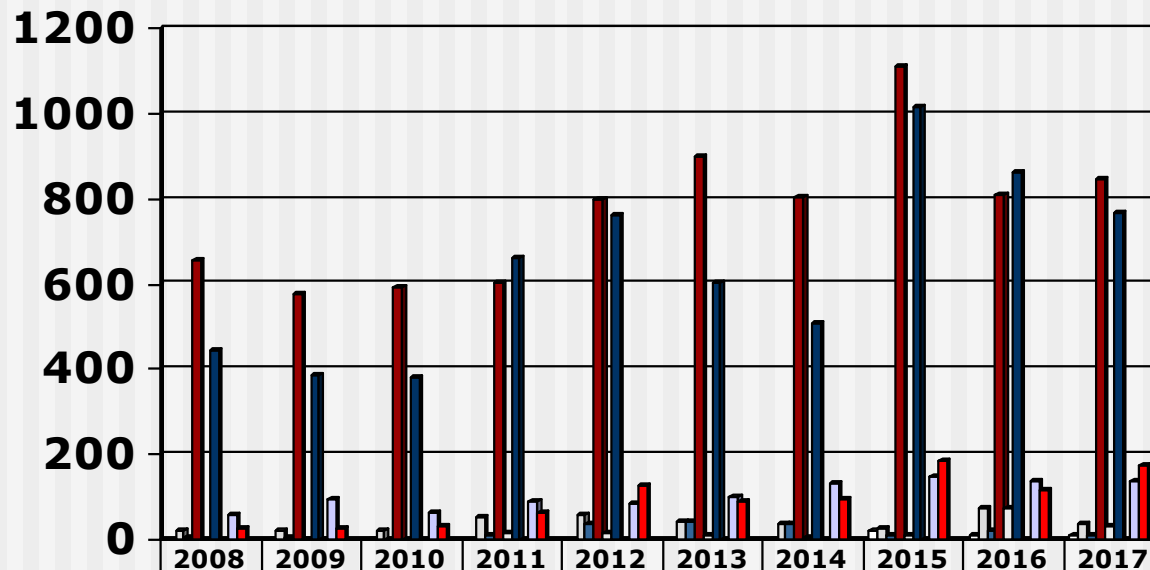


# Output Bridging Programme (2008 - 2017) Public Institutions



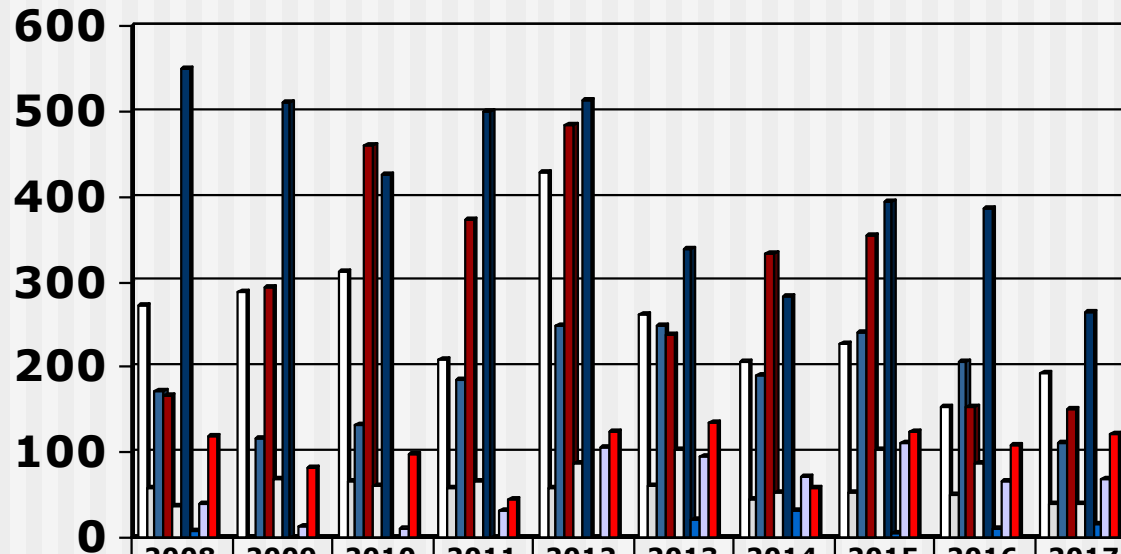
Limpopo
  North West
  Mpumalanga
  Gauteng
  Free State
   
 KwaZulu Natal
  Northern Cape
  Western Cape
  Eastern Cape

# Output Bridging Programme (2008 - 2017) Private Institutions



□ Limpopo		1	2				1	20	13	13
□ North West	19	21	23	53	59	40	39	27	74	37
■ Mpumulanga	6	6		11	39	42	36	12	20	10
■ Gauteng	657	575	590	605	799	899	805	1110	811	847
□ Free State		0		15	15	12	3	10	74	30
■ KwaZulu Natal	442	385	382	662	760	602	506	1014	862	767
■ Northern Cape		0								
□ Western Cape	57	96	62	89	84	103	130	146	136	136
■ Eastern Cape	28	25	33	64	125	89	97	183	117	172
■										

# Output Bridging Programme (2008 - 2017) Public Institutions



	2008	2009	2010	2011	2012	2013	2014	2015	2016	2017
□ Limpopo	273	288	313	209	429	261	207	227	152	192
□ North West	57	0	65	59	57	61	45	54	49	39
■ Mpumulanga	172	115	132	184	249	249	189	241	207	111
■ Gauteng	166	293	460	372	484	239	332	354	154	150
□ Free State	36	68	60	66	87	104	53	104	86	40
■ KwaZulu Natal	550	509	425	500	514	338	284	395	386	265
■ Northern Cape	8	0				22	32	4	11	15
□ Western Cape	39	12	10	31	106	95	72	111	66	68
■ Eastern Cape	118	81	98	44	125	135	58	124	108	122
■										