

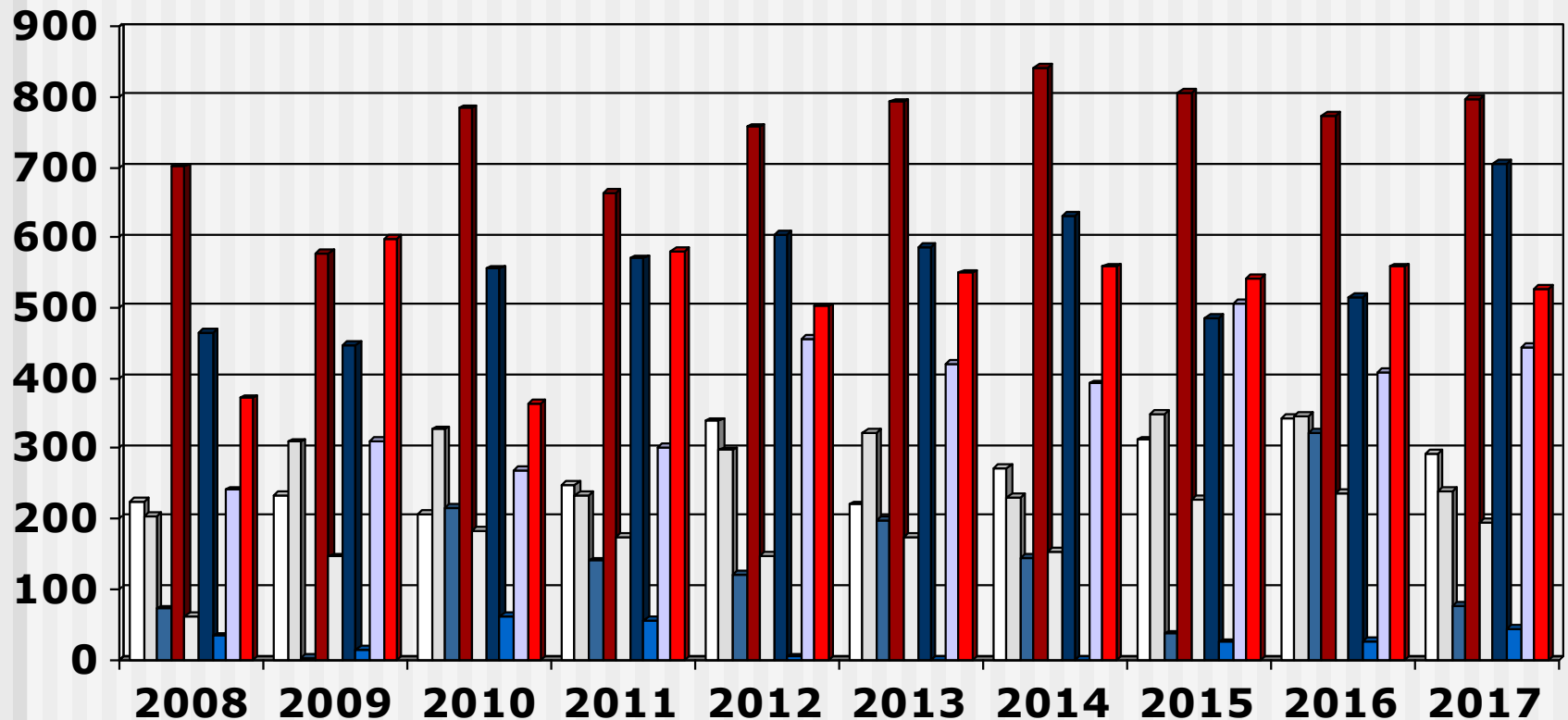
# Output 4-Year Programme (2008 - 2017) Overview

---

- These slides show the output of Nursing Education Institutions (Nursing Colleges and Universities) providing the 4-year programme leading to registration as a Nurse (General, Psychiatric and Community) and Midwife for the years 2008 - 2017
- Each slide is presented twice: first all slides are shown without data tables and then the slides are repeated with full data tables
- For further information, please contact:
  - S A Nursing Council:  
Private Bag X132, Pretoria, 0001, Republic of South Africa
  - Phone: 012 420-1000
  - Fax: 012 343-5400
  - E-mail: [registrar@sanc.co.za](mailto:registrar@sanc.co.za)
  - Website: [www.sanc.co.za](http://www.sanc.co.za)

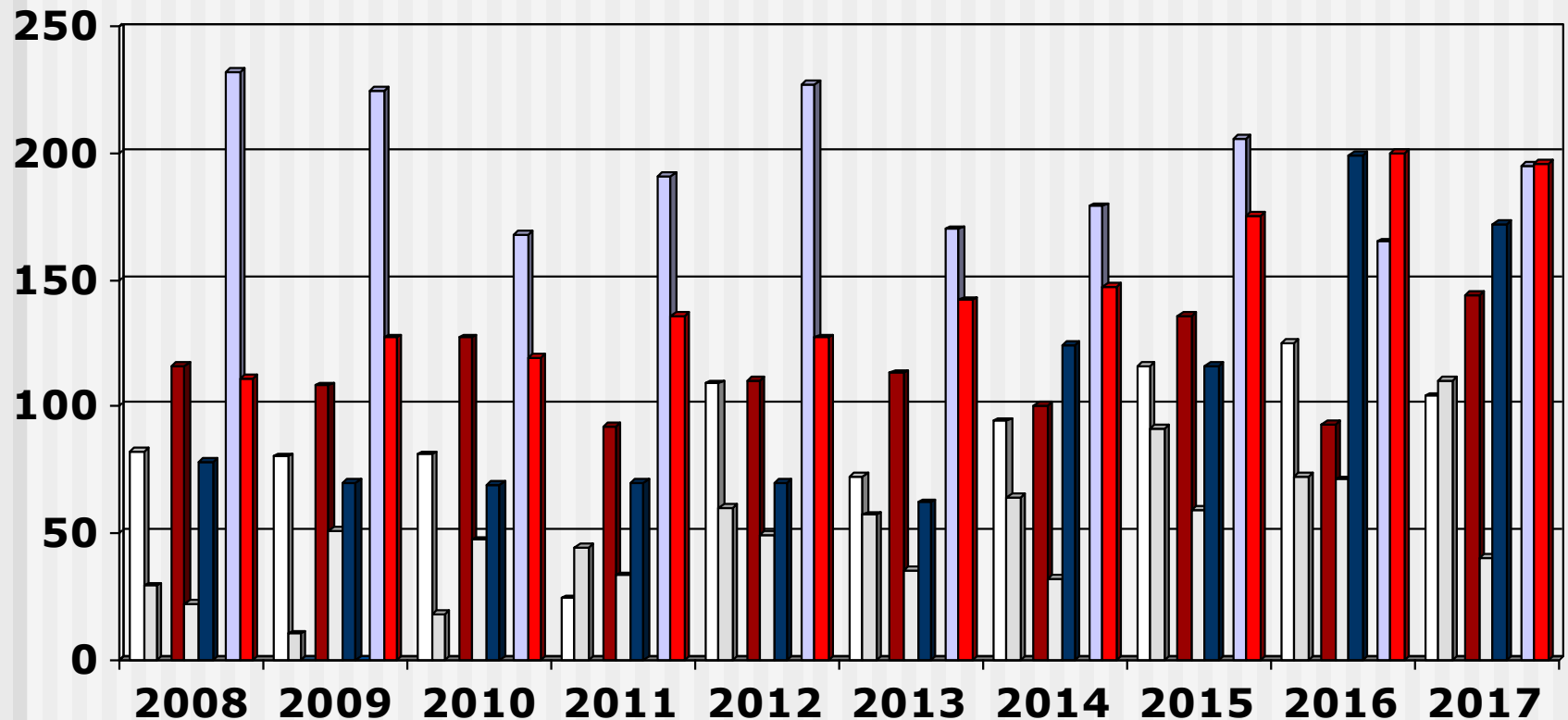
# Output 4-Year Programme

(2008 - 2017) All Institutions



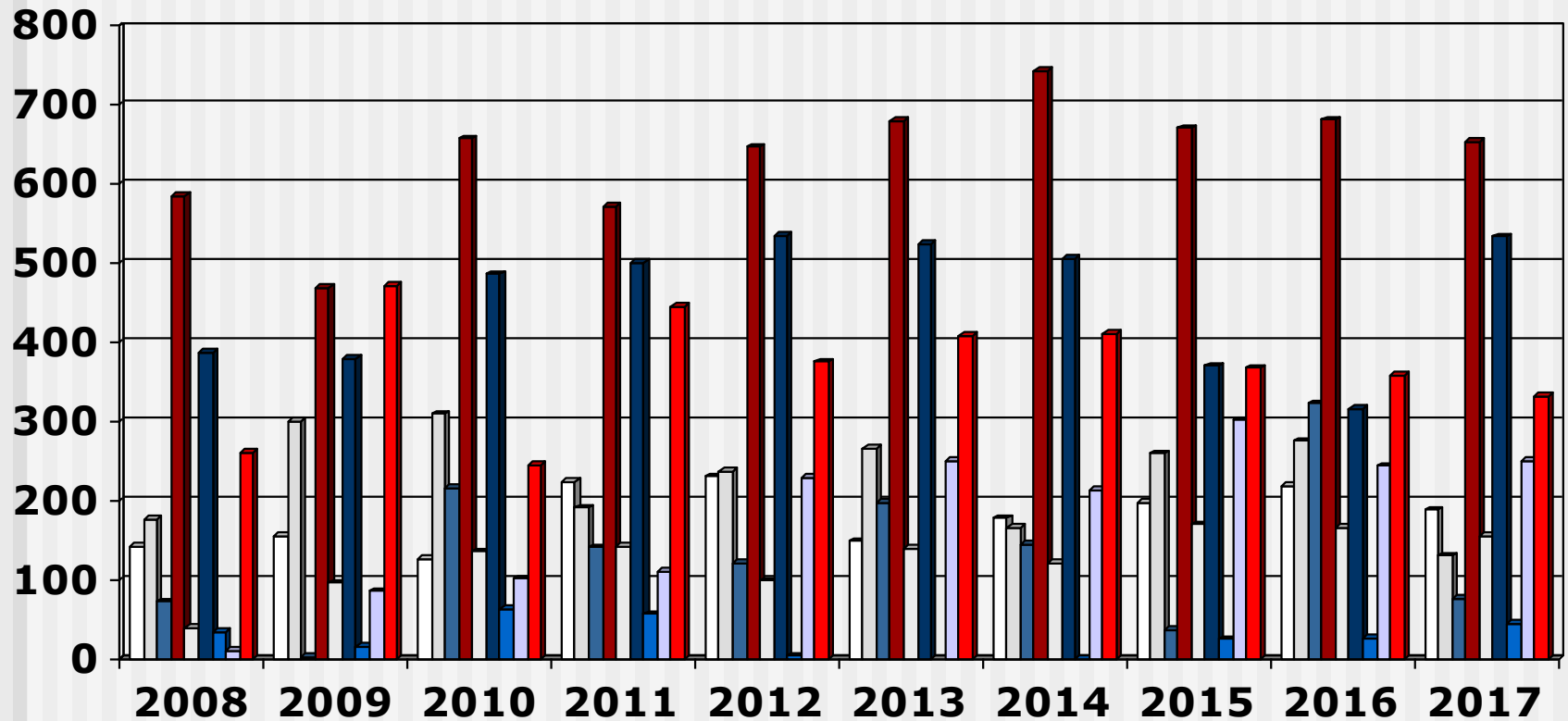
□ Limpopo      □ North West      ■ Mpumalanga      ■ Gauteng      □ Free State  
■ KwaZulu Natal      ■ Northern Cape      ■ Western Cape      ■ Eastern Cape

# Output 4-Year Programme (2008 - 2017) Universities

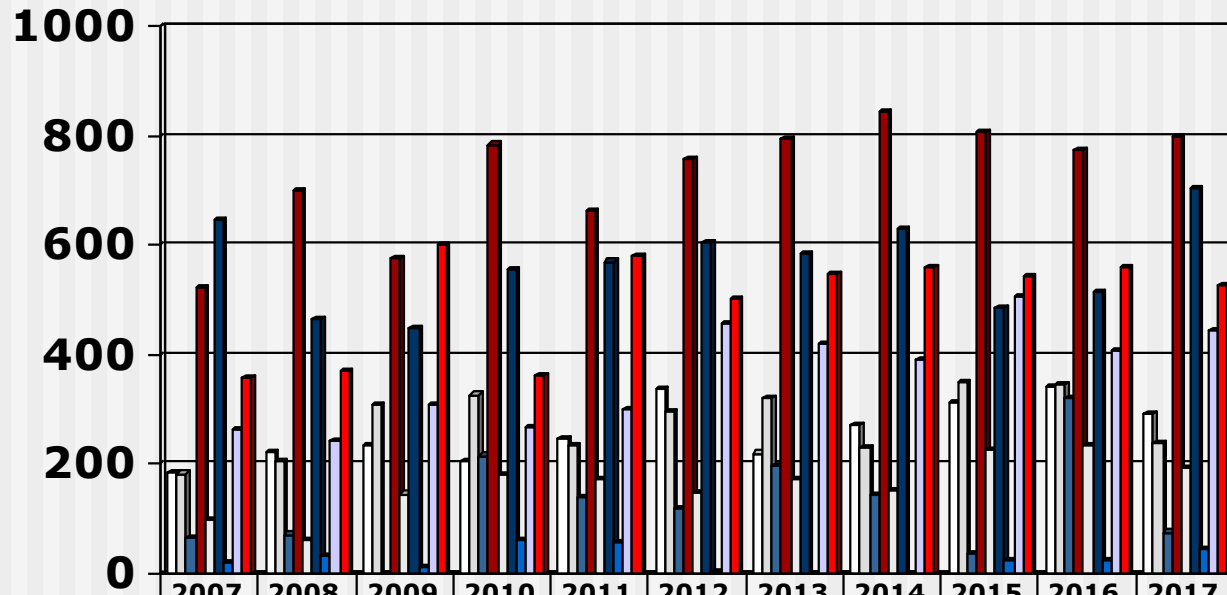


# Output 4-Year Programme

(2008 - 2017) Nursing Colleges

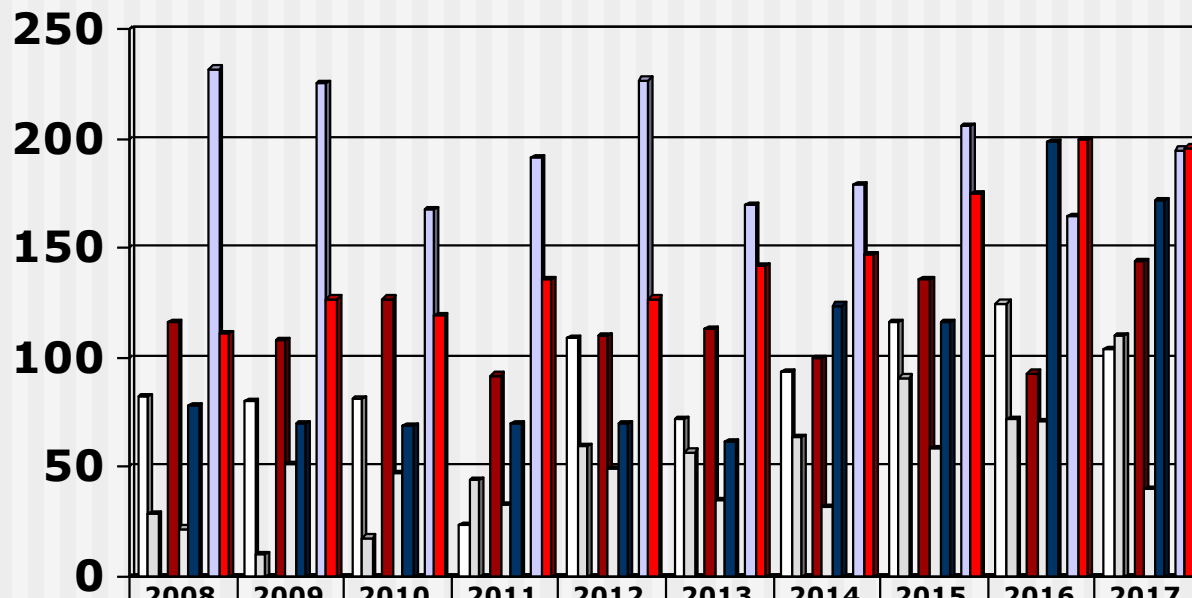


# Output 4-Year Programme (2008 - 2017) All Institutions



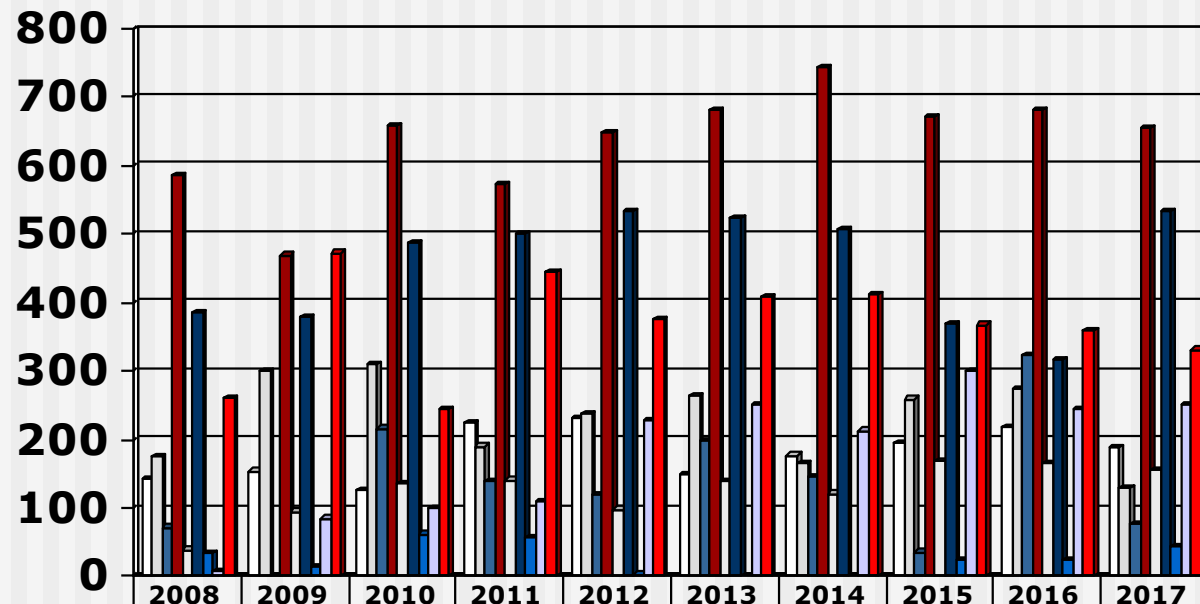
	2007	2008	2009	2010	2011	2012	2013	2014	2015	2016	2017
□ Limpopo	185	224	234	207	248	339	220	271	312	343	292
□ North West	183	204	309	327	234	297	322	230	350	347	240
■ Mpumulanga	64	72	1	216	140	120	197	145	36	322	76
■ Gauteng	521	701	577	784	663	757	793	842	806	774	798
□ Free State	100	61	146	182	174	147	174	153	228	236	195
■ KwaZulu Natal	647	464	448	555	570	604	586	630	486	515	705
■ Northern Cape	19	33	14	62	56	3	0	0	24	25	44
□ Western Cape	265	241	310	269	301	456	420	392	507	408	445
■ Eastern Cape	358	371	599	364	580	502	549	558	542	558	527

# Output 4-Year Programme (2008 - 2017) Universities



	2008	2009	2010	2011	2012	2013	2014	2015	2016	2017
□ Limpopo	82	80	81	24	109	72	94	116	125	104
□ North West	29	10	18	44	60	57	64	91	72	110
■ Mpumulanga		0								
■ Gauteng	116	108	127	92	110	113	100	136	93	144
□ Free State	22	51	47	33	49	35	32	59	71	40
■ KwaZulu Natal	78	70	69	70	70	62	124	116	199	172
■ Northern Cape		0								
□ Western Cape	232	225	168	191	227	170	179	206	165	195
■ Eastern Cape	111	127	119	136	127	142	147	175	200	196

# Output 4-Year Programme (2008 - 2017) Nursing Colleges



	2008	2009	2010	2011	2012	2013	2014	2015	2016	2017
□ Limpopo	142	154	126	224	230	148	177	196	218	188
□ North West	175	299	309	190	237	265	166	259	275	130
■ Mpumulanga	72	1	216	140	120	197	145	36	322	76
■ Gauteng	585	469	657	571	647	680	742	670	681	654
□ Free State	39	95	135	141	98	139	121	169	165	155
■ KwaZulu Natal	386	378	486	500	534	524	506	370	316	533
■ Northern Cape	33	14	62	56	3			24	25	44
□ Western Cape	9	85	101	110	229	250	213	301	243	250
■ Eastern Cape	260	472	245	444	375	407	411	367	358	331