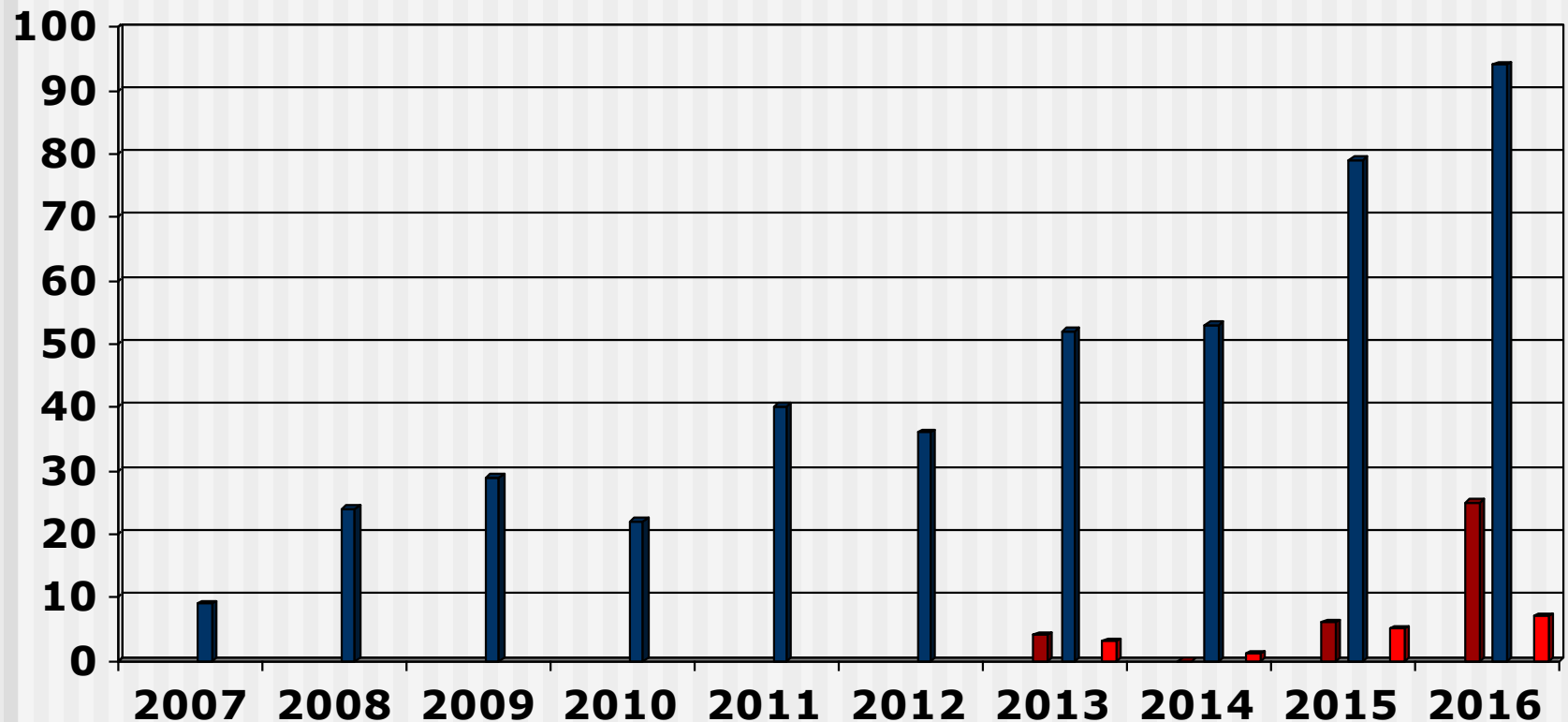


Output Midwifery Programme (2007 - 2016) Overview

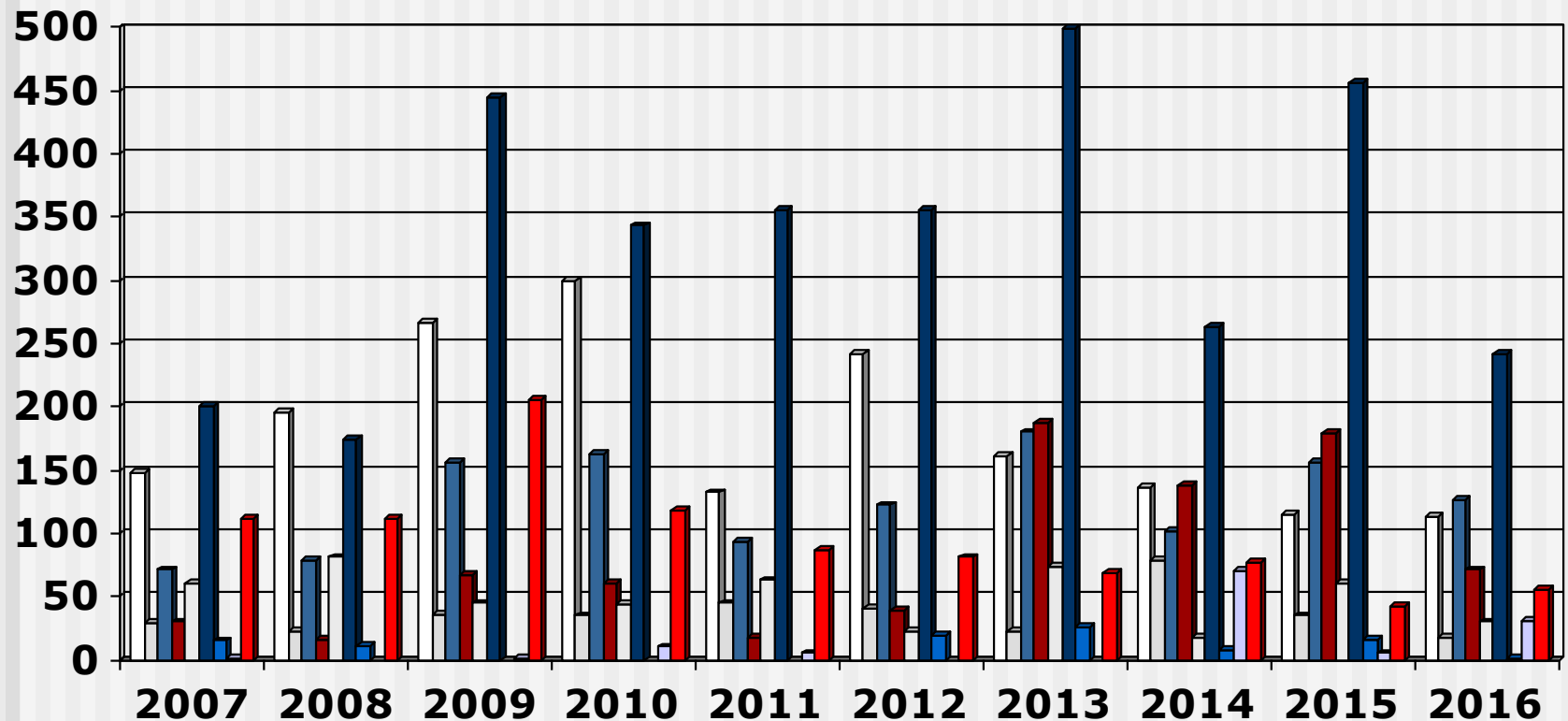
- These slides show the output of Nursing Education Institutions (Public and Private Institutions) providing the programme leading to registration as a Midwife for the years 2007 - 2016
- Each slide is presented twice: first all slides are shown without data tables and then the slides are repeated with full data tables
- For further information, please contact:
 - S A Nursing Council:
Private Bag X132, Pretoria, 0001, Republic of South Africa
 - Phone: 012 420-1000
 - Fax: 012 343-5400
 - E-mail: registrar@sanc.co.za
 - Website: www.sanc.co.za

Output Midwifery Programme (2007 - 2016) Private Institutions



□ Limpopo □ North West □ Mpumulanga ■ Gauteng □ Free State
■ KwaZulu Natal ■ Northern Cape □ Western Cape ■ Eastern Cape

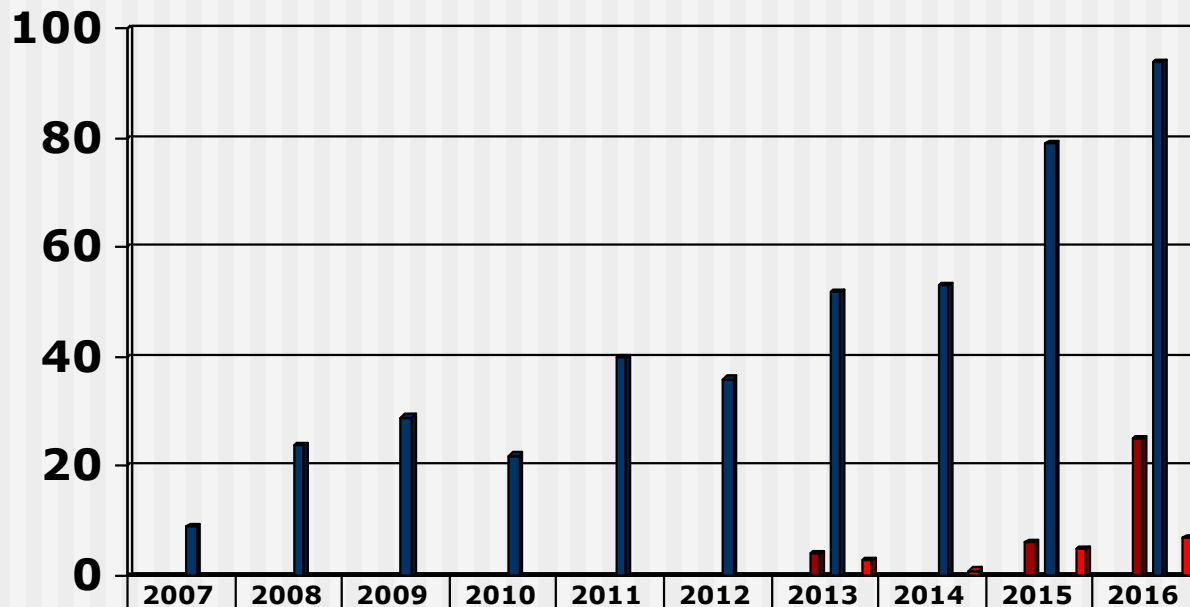
Output Midwifery Programme (2007 - 2016) Public Institutions



Limpopo
 North West
 Mpumalanga
 Gauteng
 Free State

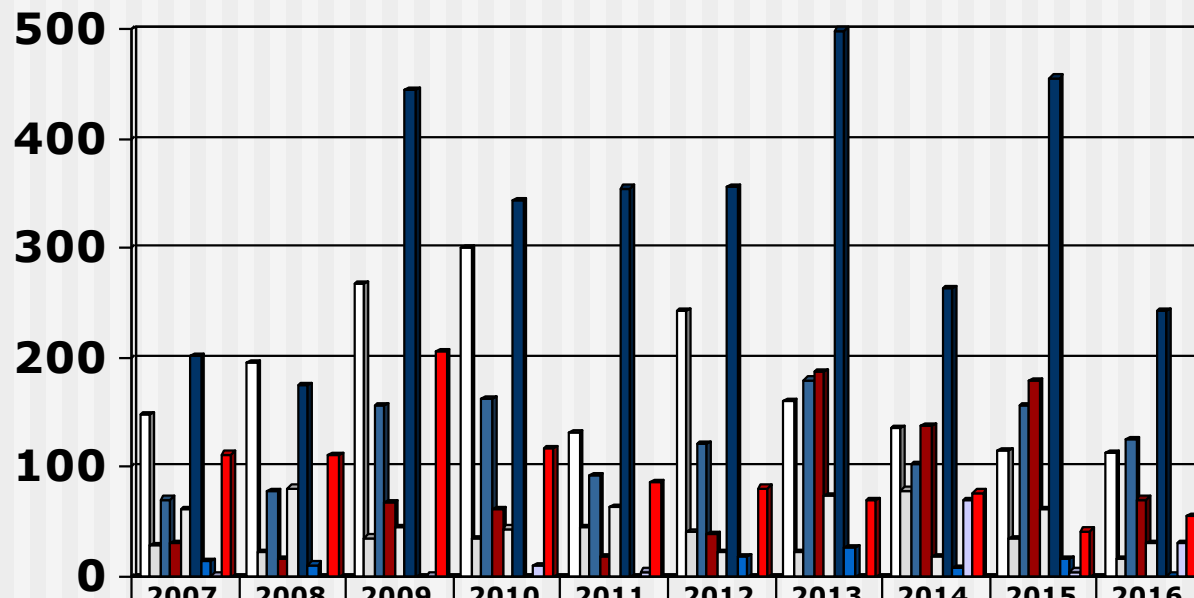
 KwaZulu Natal
 Northern Cape
 Western Cape
 Eastern Cape

Output Midwifery Programme (2007 - 2016) Private Institutions



	2007	2008	2009	2010	2011	2012	2013	2014	2015	2016
□ Limpopo										
□ North West										
■ Mpumulanga										
■ Gauteng							4	0	6	25
□ Free State										
■ KwaZulu Natal	9	24	29	22	40	36	52	53	79	94
■ Northern Cape										
□ Western Cape										
■ Eastern Cape							3	1	5	7

Output Midwifery Programme (2007 - 2016) Public Institutions



	2007	2008	2009	2010	2011	2012	2013	2014	2015	2016
□ Limpopo	148	196	267	300	132	242	161	136	115	113
□ North West	29	23	36	35	45	41	22	79	35	17
■ Mpumulanga	71	78	156	163	93	122	180	102	156	126
■ Gauteng	30	16	67	61	18	39	187	138	179	71
□ Free State	61	81	45	44	63	22	74	18	61	30
■ KwaZulu Natal	201	174	444	343	355	356	499	263	456	242
■ Northern Cape	15	11				19	26	8	16	1
□ Western Cape	1		1	10	5			70	5	31
■ Eastern Cape	112	111	206	118	87	81	69	77	42	55