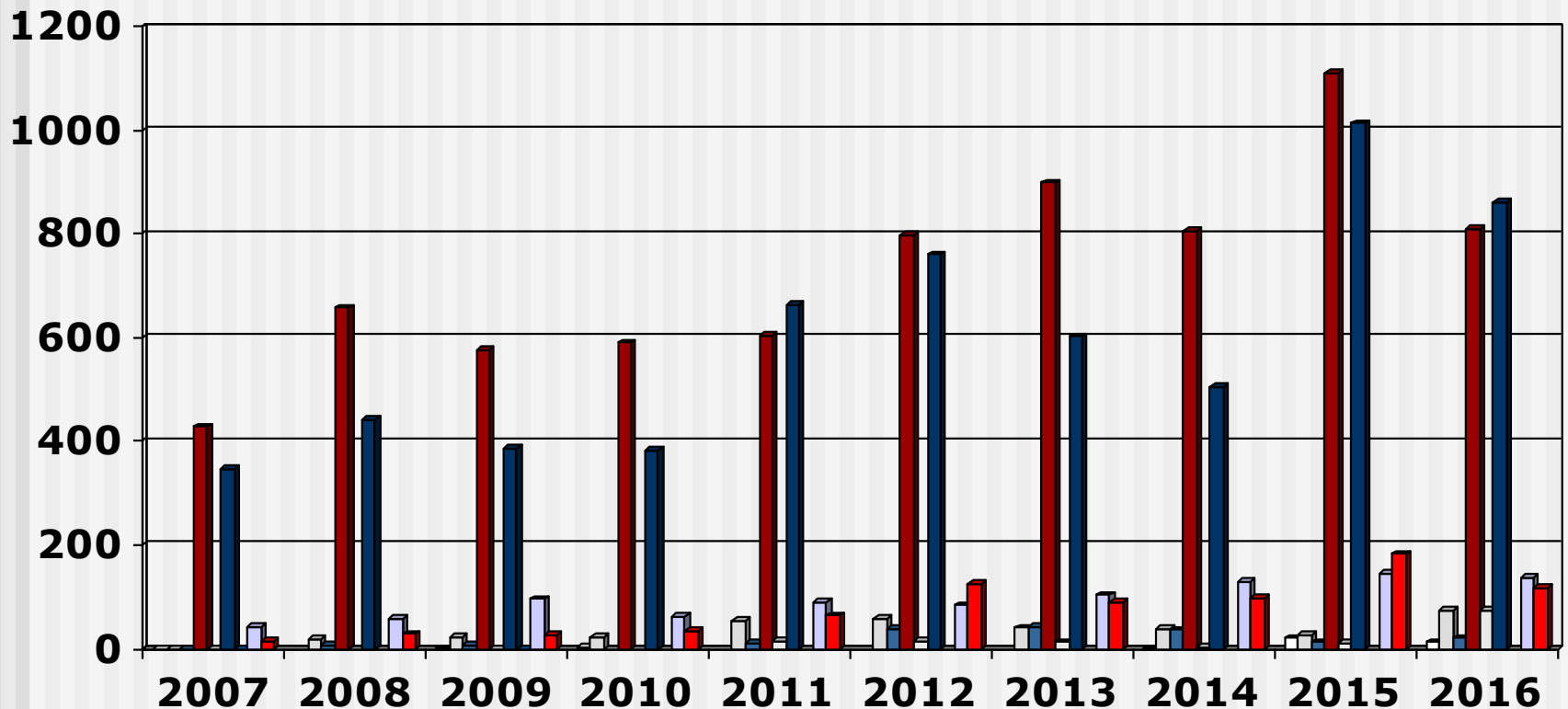


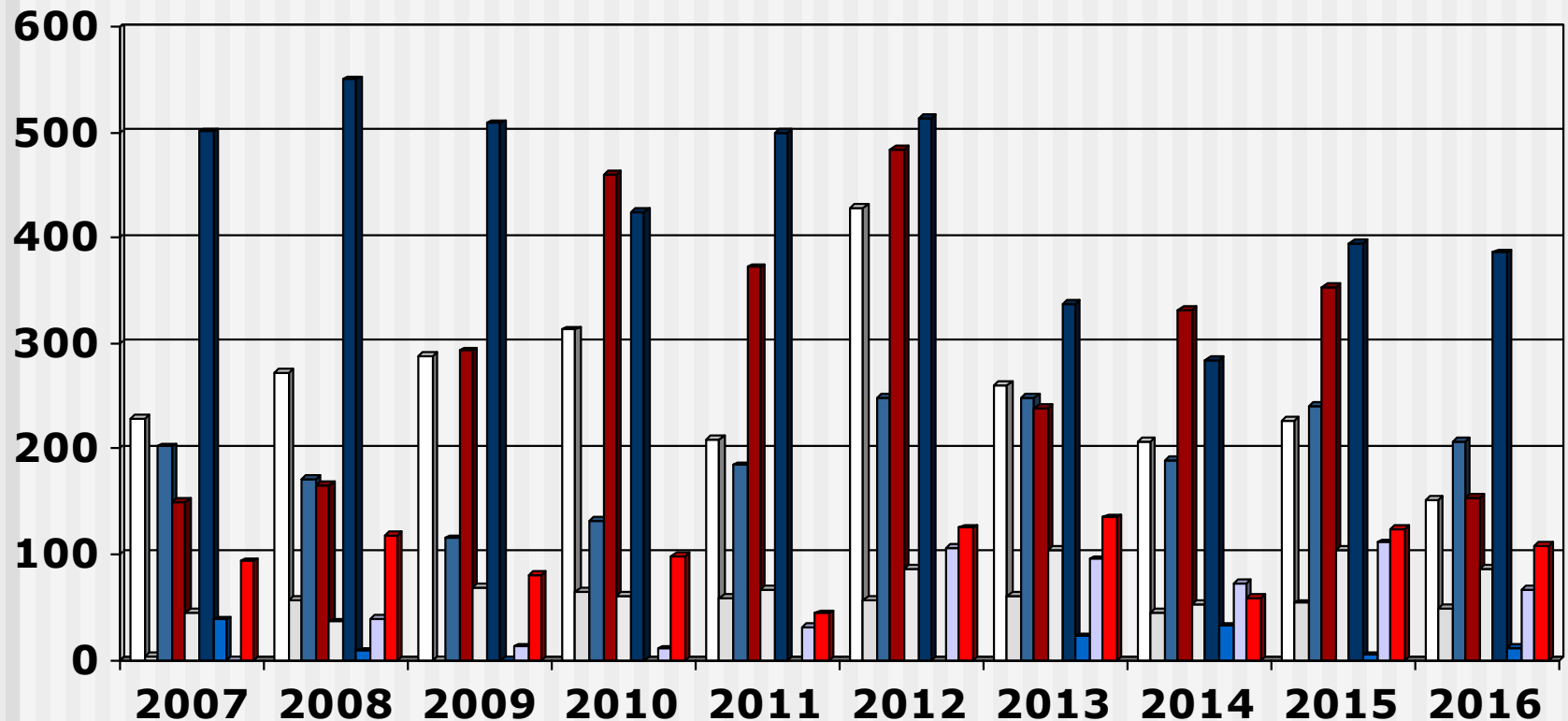
Output Bridging Programme (2007 - 2016) Overview

- These slides show the output of Nursing Education Institutions (Public and Private Institutions) providing the bridging programme leading to registration as a General Nurse or as a Psychiatric Nurse for the years 2007 - 2016
- Each slide is presented twice: first all slides are shown without data tables and then the slides are repeated with full data tables
- For further information, please contact:
 - S A Nursing Council:
Private Bag X132, Pretoria, 0001, Republic of South Africa
 - Phone: 012 420-1000
 - Fax: 012 343-5400
 - E-mail: registrar@sanc.co.za
 - Website: www.sanc.co.za

Output Bridging Programme (2007 - 2016) Private Institutions



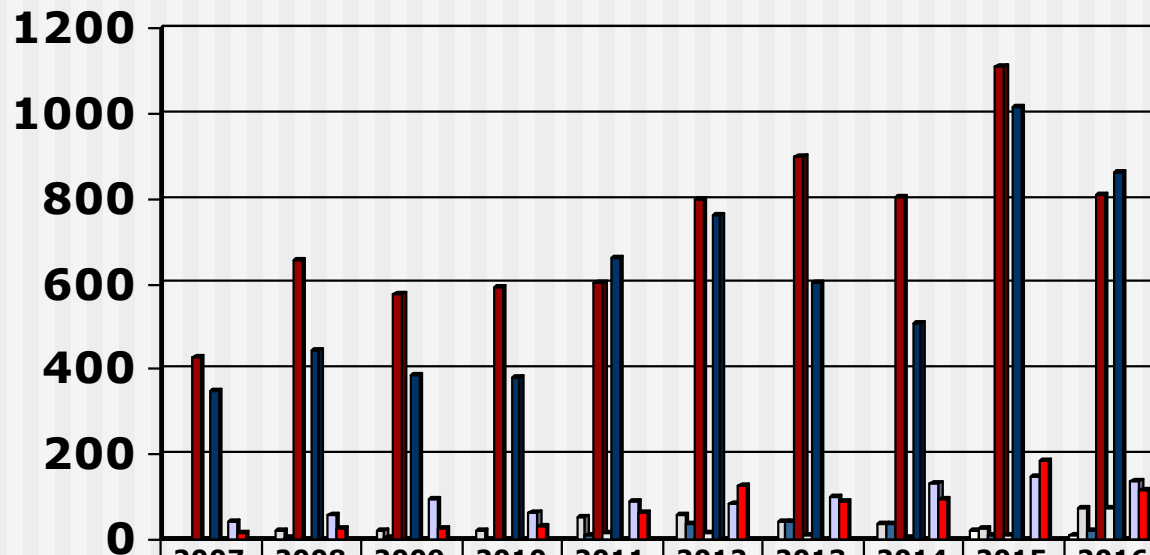
Output Bridging Programme (2007 - 2016) Public Institutions



Limpopo
 North West
 Mpumulanga
 Gauteng
 Free State

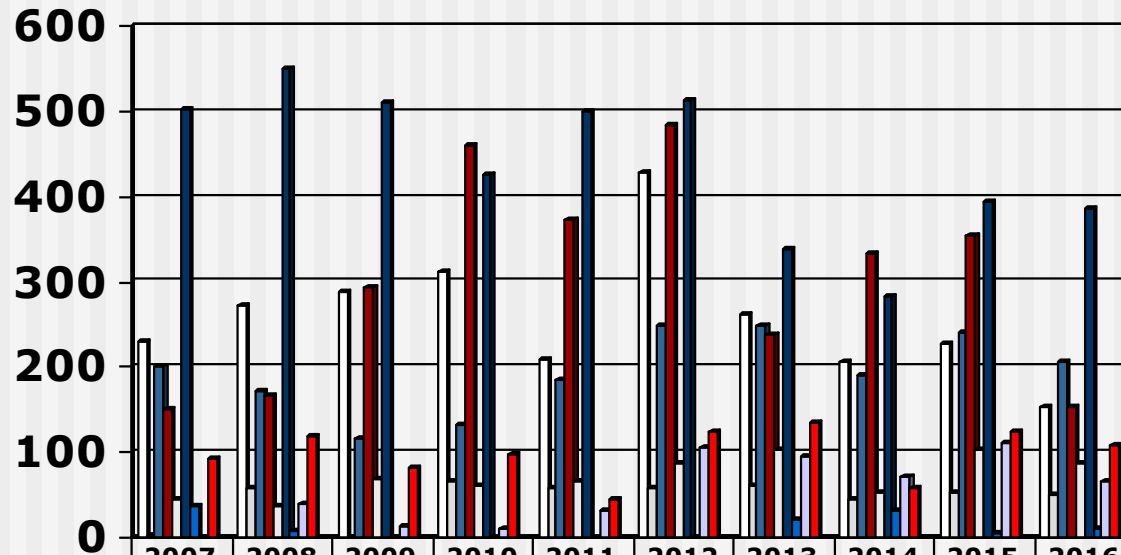
 KwaZulu Natal
 Northern Cape
 Western Cape
 Eastern Cape

Output Bridging Programme (2007 - 2016) Private Institutions



	2007	2008	2009	2010	2011	2012	2013	2014	2015	2016
□ Limpopo	0		1	2				1	20	13
□ North West	0	19	21	23	53	59	40	39	27	74
■ Mpumulanga	0	6	6		11	39	42	36	12	20
■ Gauteng	428	657	575	590	605	799	899	805	1110	811
□ Free State	0		0		15	15	12	3	10	74
■ KwaZulu Natal	348	442	385	382	662	760	602	506	1014	862
■ Northern Cape	0		0							
□ Western Cape	42	57	96	62	89	84	103	130	146	136
■ Eastern Cape	14	28	25	33	64	125	89	97	183	117
■										

Output Bridging Programme (2007 - 2016) Public Institutions



	2007	2008	2009	2010	2011	2012	2013	2014	2015	2016
□ Limpopo	229	273	288	313	209	429	261	207	227	152
□ North West	3	57	0	65	59	57	61	45	54	49
■ Mpumulanga	202	172	115	132	184	249	249	189	241	207
■ Gauteng	150	166	293	460	372	484	239	332	354	154
□ Free State	45	36	68	60	66	87	104	53	104	86
■ KwaZulu Natal	501	550	509	425	500	514	338	284	395	386
■ Northern Cape	38	8	0				22	32	4	11
□ Western Cape	0	39	12	10	31	106	95	72	111	66
■ Eastern Cape	93	118	81	98	44	125	135	58	124	108
■										