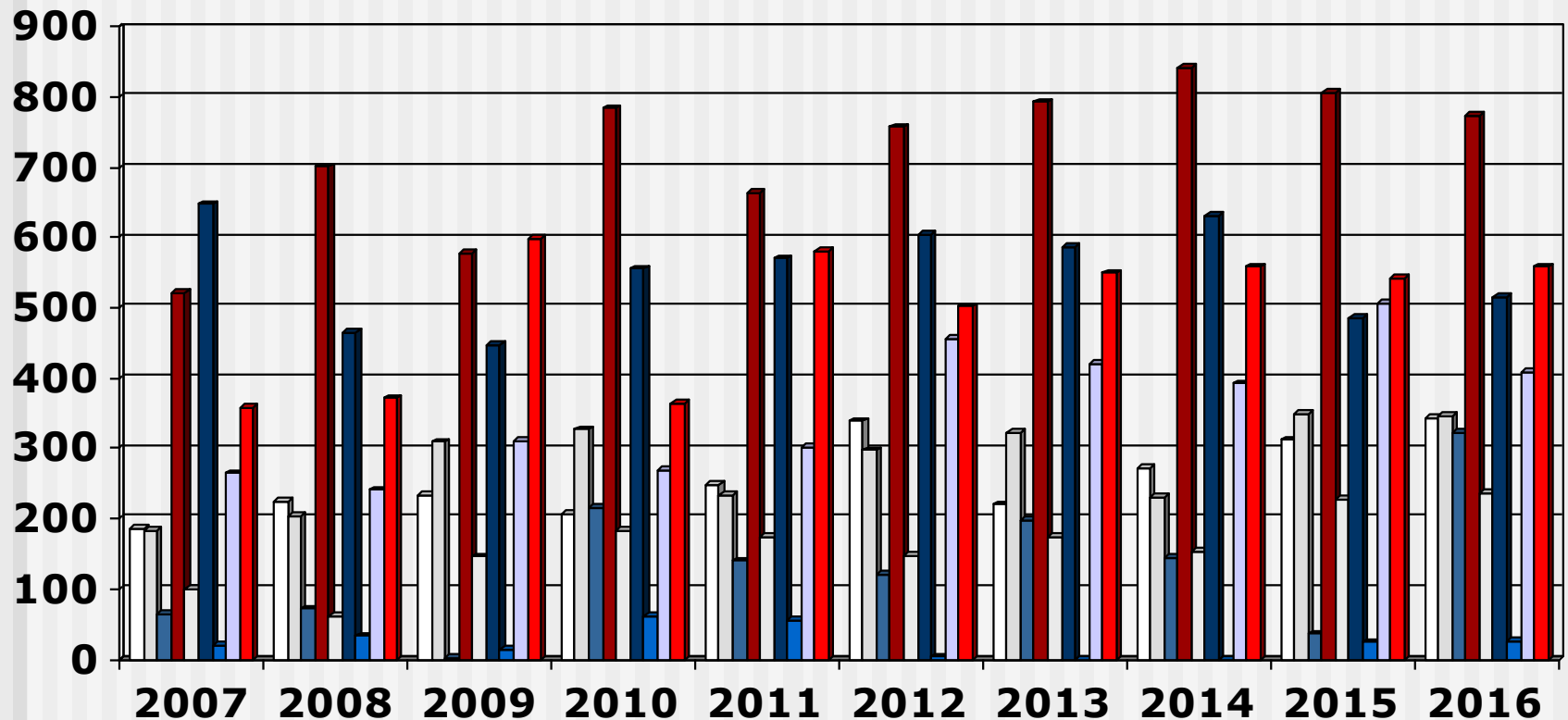


Output 4-Year Programme (2007 - 2016) Overview

- These slides show the output of Nursing Education Institutions (Nursing Colleges and Universities) providing the 4-year programme leading to registration as a Nurse (General, Psychiatric and Community) and Midwife for the years 2007 - 2016
- Each slide is presented twice: first all slides are shown without data tables and then the slides are repeated with full data tables
- For further information, please contact:
 - S A Nursing Council:
Private Bag X132, Pretoria, 0001, Republic of South Africa
 - Phone: 012 420-1000
 - Fax: 012 343-5400
 - E-mail: registrar@sanc.co.za
 - Website: www.sanc.co.za

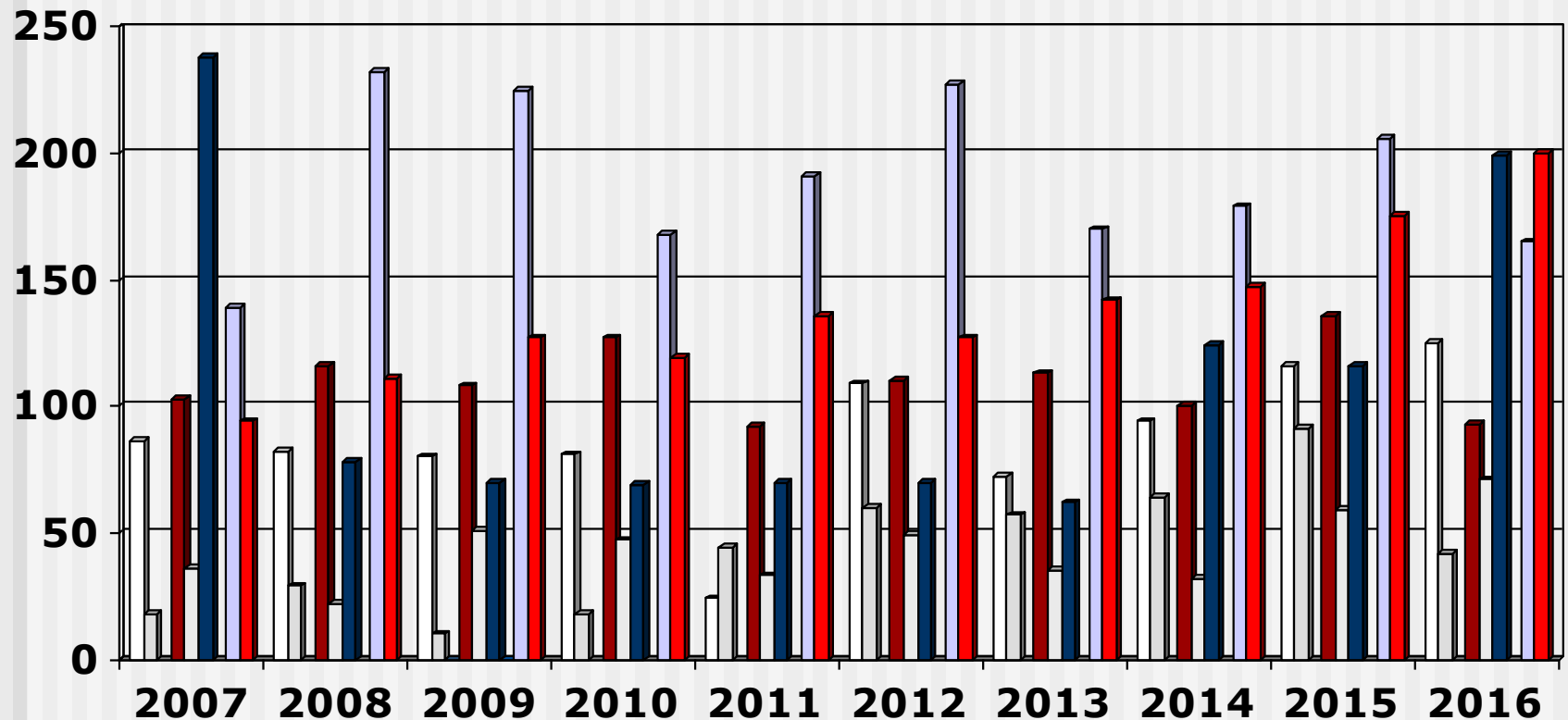
Output 4-Year Programme

(2007 - 2016) All Institutions



Limpopo North West Mpumalanga Gauteng Free State
 KwaZulu Natal Northern Cape Western Cape Eastern Cape

Output 4-Year Programme (2007 - 2016) Universities

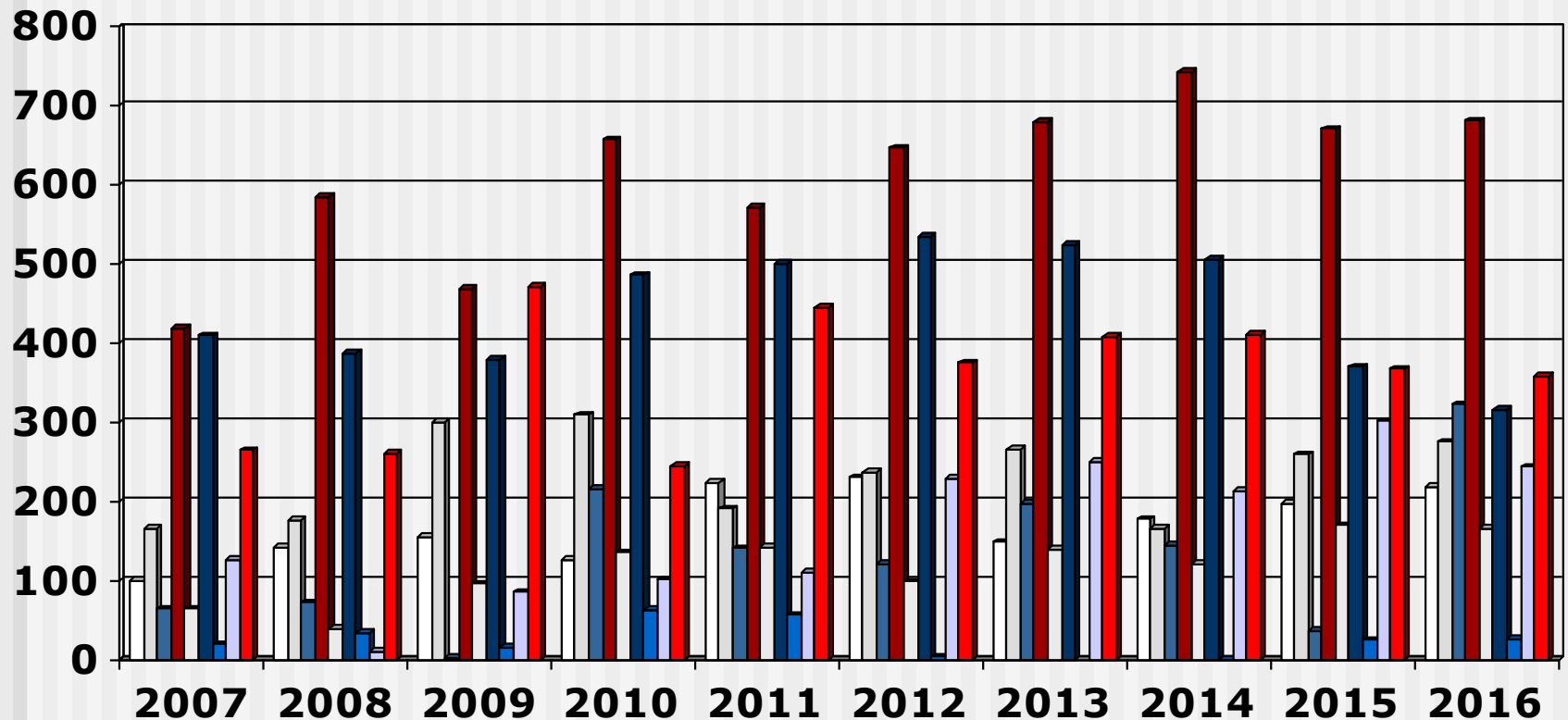


Limpopo
 North West
 Mpumulanga
 Gauteng
 Free State

 KwaZulu Natal
 Northern Cape
 Western Cape
 Eastern Cape

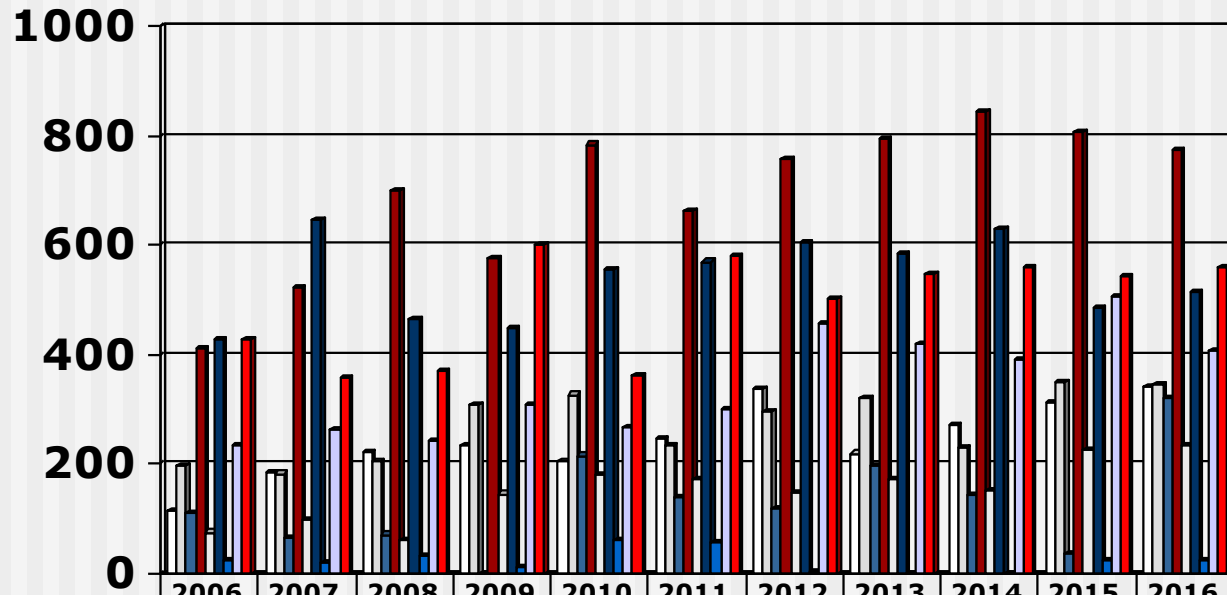
Output 4-Year Programme

(2007 - 2016) Nursing Colleges



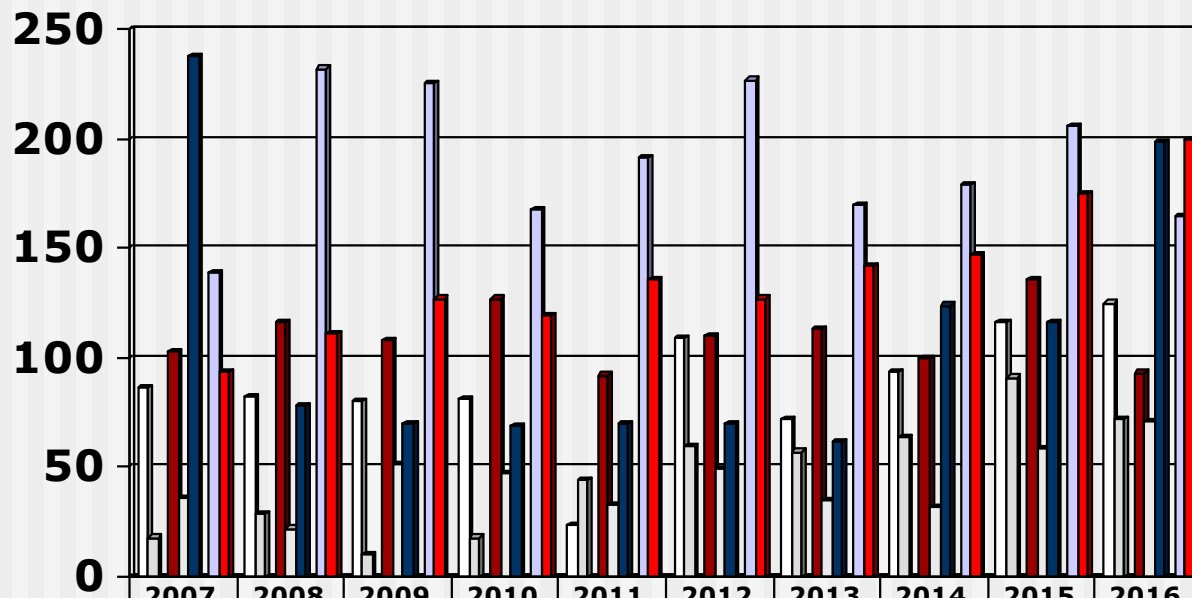
□ Limpopo □ North West ■ Mpumulanga ■ Gauteng □ Free State
■ KwaZulu Natal ■ Northern Cape ■ Western Cape ■ Eastern Cape

Output 4-Year Programme (2007 - 2016) All Institutions



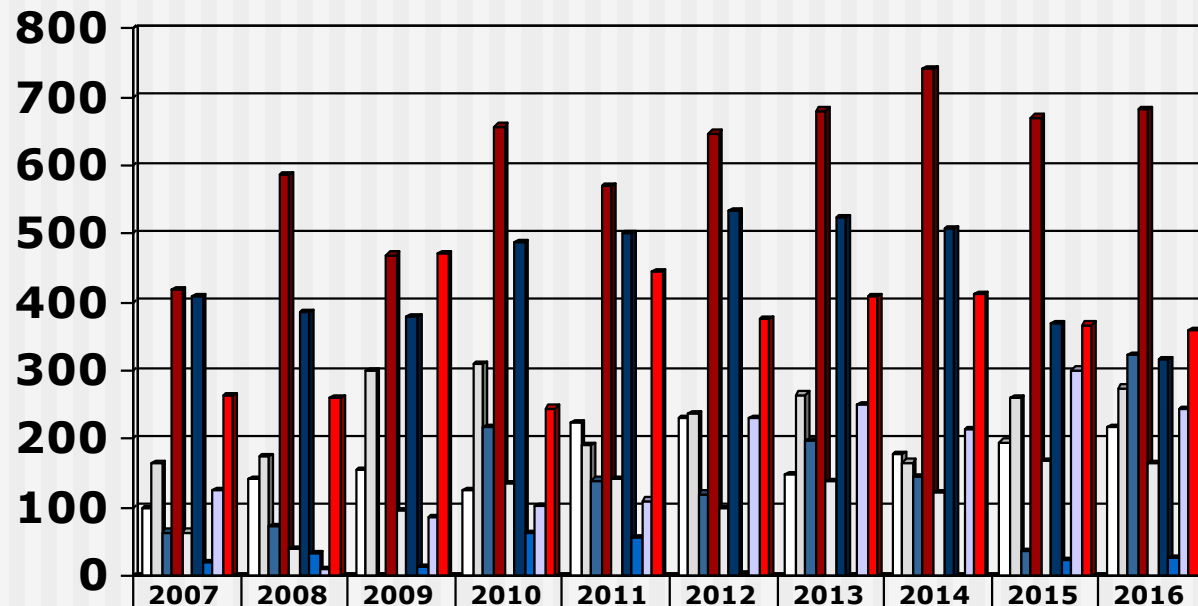
	2006	2007	2008	2009	2010	2011	2012	2013	2014	2015	2016
□ Limpopo	114	185	224	234	207	248	339	220	271	312	343
□ North West	198	183	204	309	327	234	297	322	230	350	347
■ Mpumulanga	112	64	72	1	216	140	120	197	145	36	322
■ Gauteng	413	521	701	577	784	663	757	793	842	806	774
□ Free State	76	100	61	146	182	174	147	174	153	228	236
■ KwaZulu Natal	429	647	464	448	555	570	604	586	630	486	515
■ Northern Cape	24	19	33	14	62	56	3	0	0	24	25
□ Western Cape	233	265	241	310	269	301	456	420	392	507	408
■ Eastern Cape	428	358	371	599	364	580	502	549	558	542	558

Output 4-Year Programme (2007 - 2016) Universities



	2007	2008	2009	2010	2011	2012	2013	2014	2015	2016
□ Limpopo	86	82	80	81	24	109	72	94	116	125
□ North West	18	29	10	18	44	60	57	64	91	72
■ Mpumulanga			0							
■ Gauteng	103	116	108	127	92	110	113	100	136	93
□ Free State	36	22	51	47	33	49	35	32	59	71
■ KwaZulu Natal	238	78	70	69	70	70	62	124	116	199
■ Northern Cape			0							
□ Western Cape	139	232	225	168	191	227	170	179	206	165
■ Eastern Cape	94	111	127	119	136	127	142	147	175	200

Output 4-Year Programme (2007 - 2016) Nursing Colleges



	2007	2008	2009	2010	2011	2012	2013	2014	2015	2016
□ Limpopo	99	142	154	126	224	230	148	177	196	218
□ North West	165	175	299	309	190	237	265	166	259	275
■ Mpumulanga	64	72	1	216	140	120	197	145	36	322
■ Gauteng	418	585	469	657	571	647	680	742	670	681
□ Free State	64	39	95	135	141	98	139	121	169	165
■ KwaZulu Natal	409	386	378	486	500	534	524	506	370	316
■ Northern Cape	19	33	14	62	56	3			24	25
□ Western Cape	126	9	85	101	110	229	250	213	301	243
■ Eastern Cape	264	260	472	245	444	375	407	411	367	358