

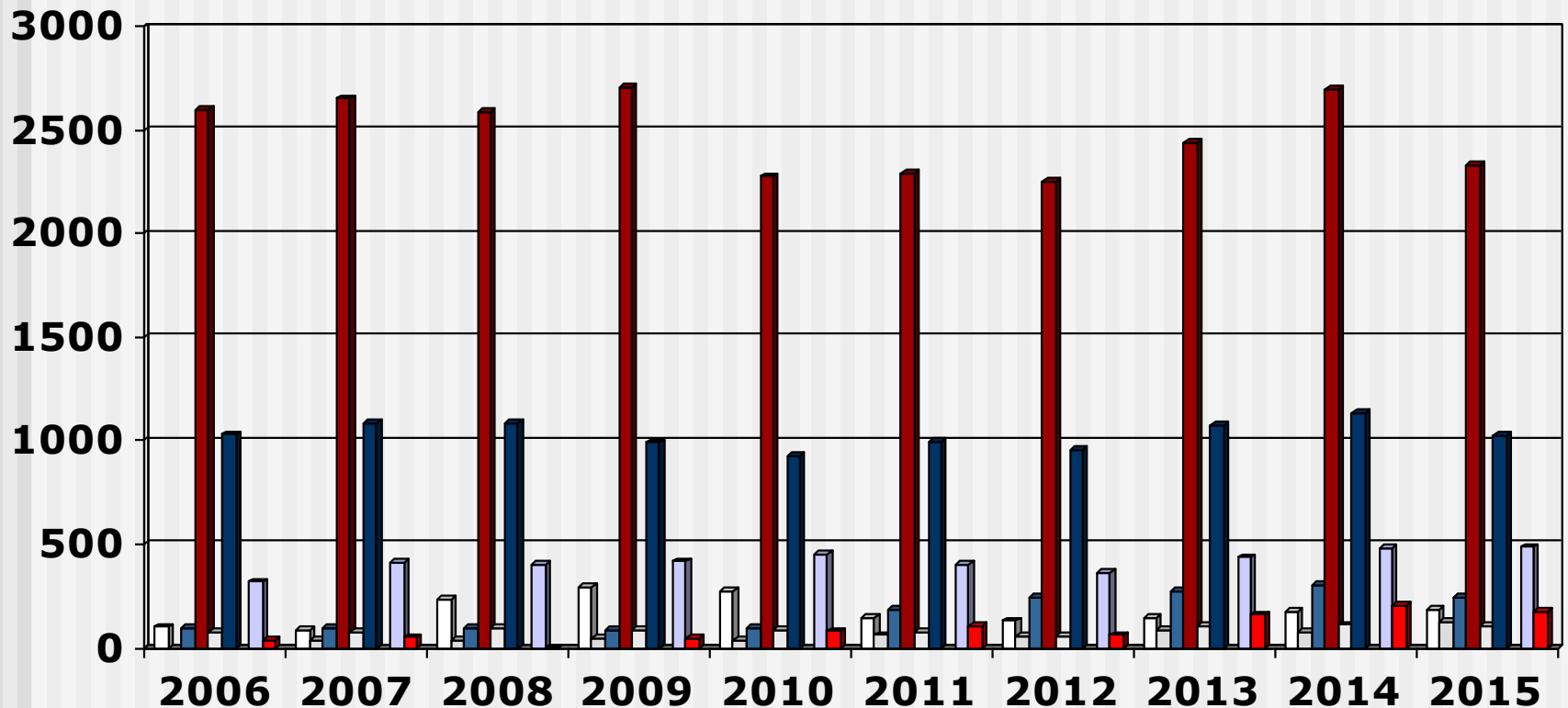
Output Pupil Auxiliaries

(2006 - 2015) Overview

- These slides show the output of Nursing Education Institutions (Public and Private Institutions) providing the programme leading to enrolment as an Enrolled Nursing Auxiliary for the years 2006 - 2015
- Each slide is presented twice: first all slides are shown without data tables and then the slides are repeated with full data tables
- For further information, please contact:
 - S A Nursing Council:
Private bag X132, Pretoria, 0001, Republic of South Africa
 - Phone: 012 420-1000
 - Fax: 012 343-5400
 - E-mail: registrar@sanc.co.za
 - Website: www.sanc.co.za

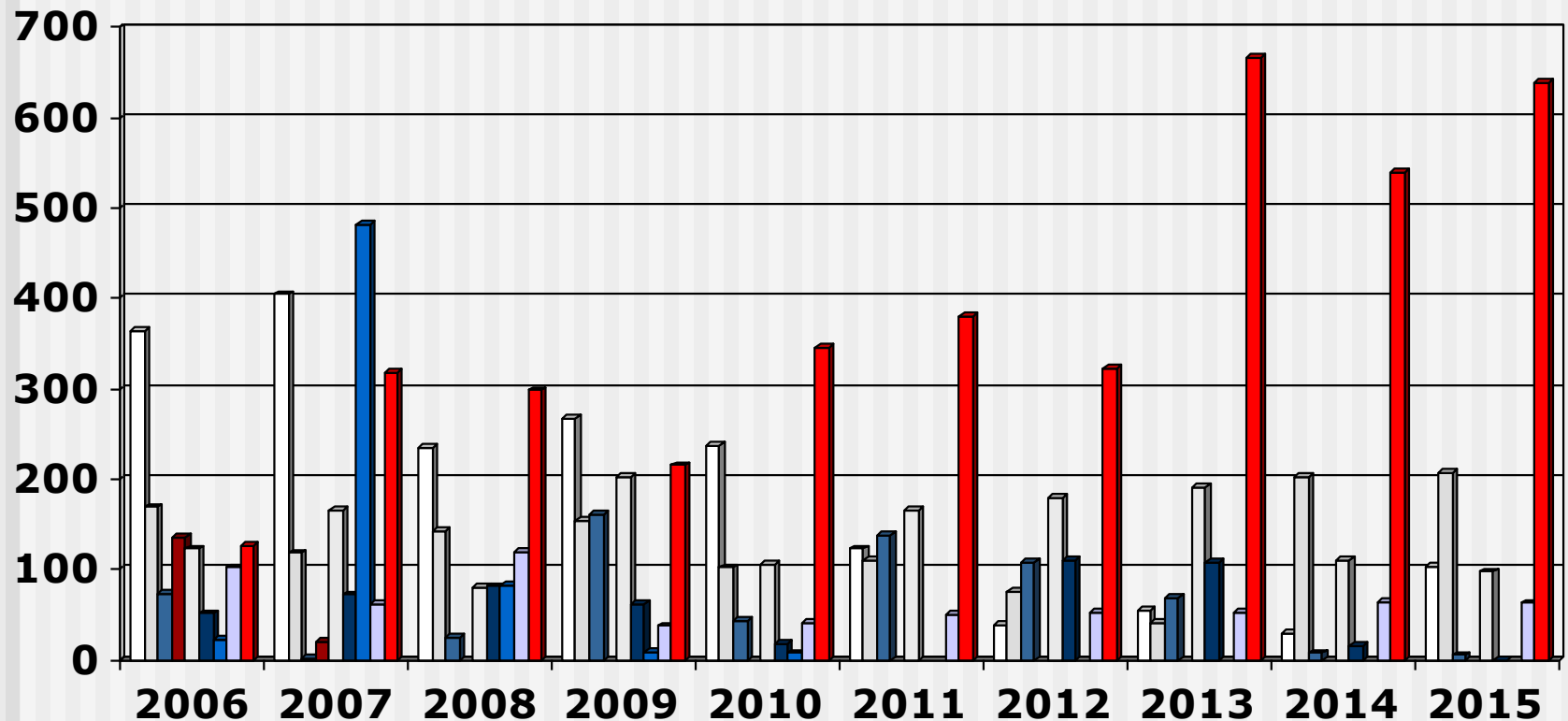
Output Pupil Auxiliaries

(2006 - 2015) Private Institutions



Output Pupil Auxiliaries

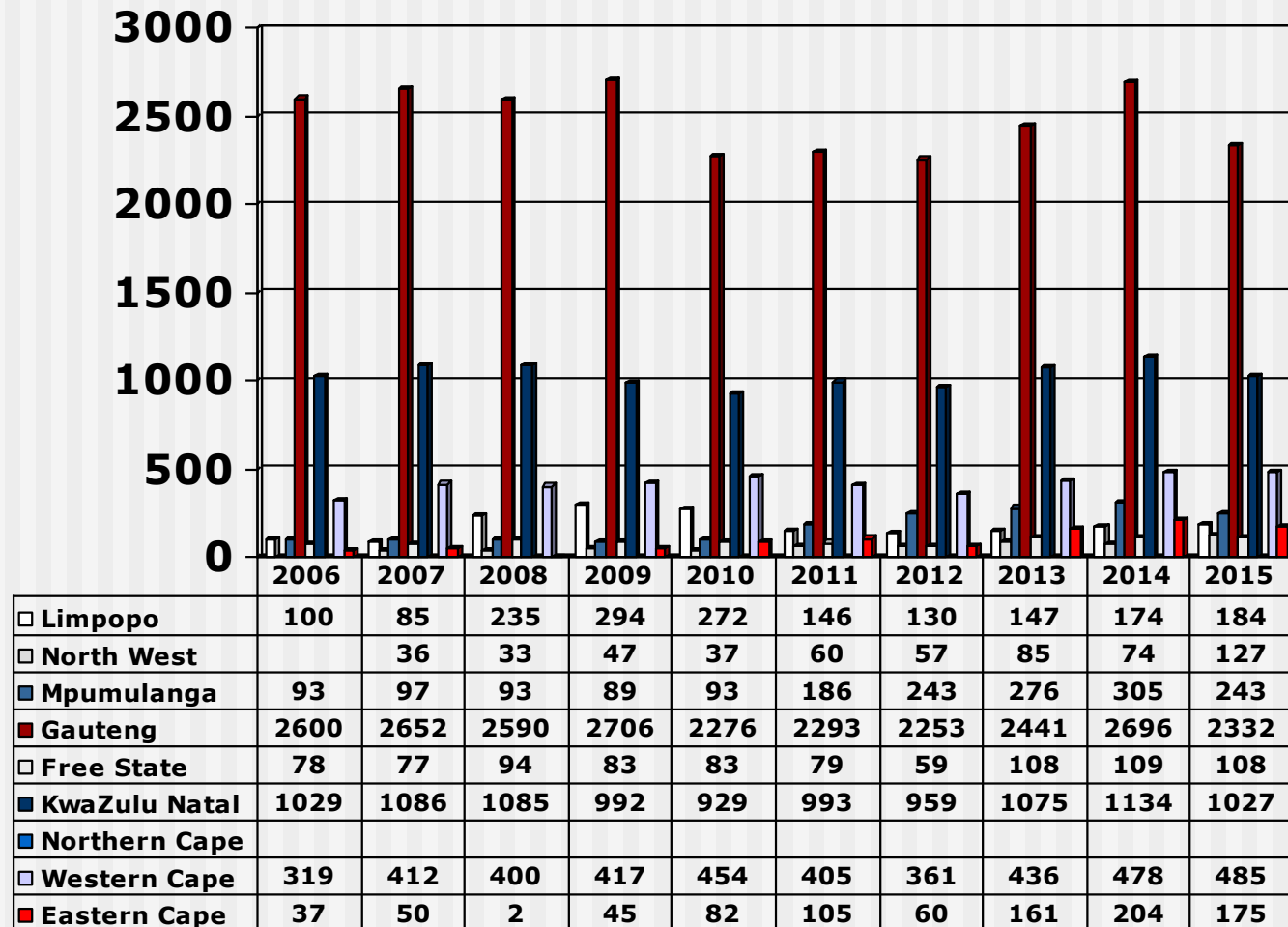
(2006 - 2015) Public Institutions



□ Limpopo □ North West ■ Mpumulanga ■ Gauteng □ Free State
■ KwaZulu Natal ■ Northern Cape □ Western Cape ■ Eastern Cape

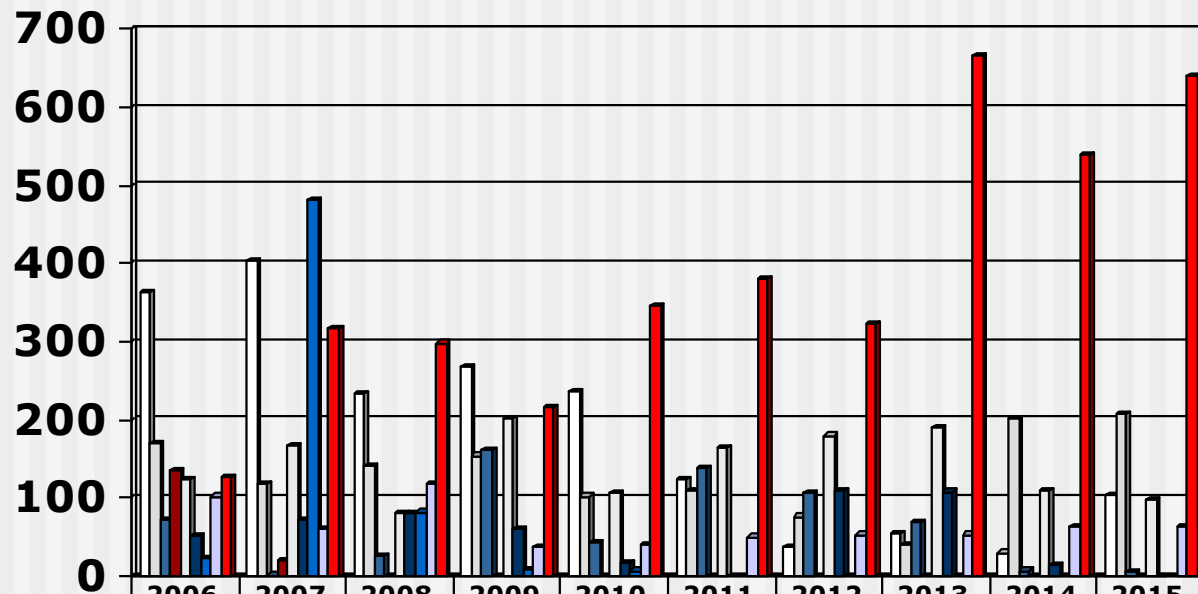
Output Pupil Auxiliaries

(2006 - 2015) Private Institutions



Output Pupil Auxiliaries

(2006 - 2015) Public Institutions



	2006	2007	2008	2009	2010	2011	2012	2013	2014	2015
□ Limpopo	364	404	234	267	237	123	38	55	30	103
□ North West	169	118	142	154	102	110	76	40	202	207
■ Mpumulanga	73	1	25	161	43	137	107	68	7	5
■ Gauteng	136	20								
□ Free State	123	166	80	202	106	165	180	190	110	97
■ KwaZulu Natal	51	72	81	61	18		110	108	15	0
■ Northern Cape	22	482	82	9	7					
□ Western Cape	102	61	119	37	40	50	53	53	64	63
■ Eastern Cape	126	317	298	215	346	380	323	666	539	639