

# Output Pupil Nurses

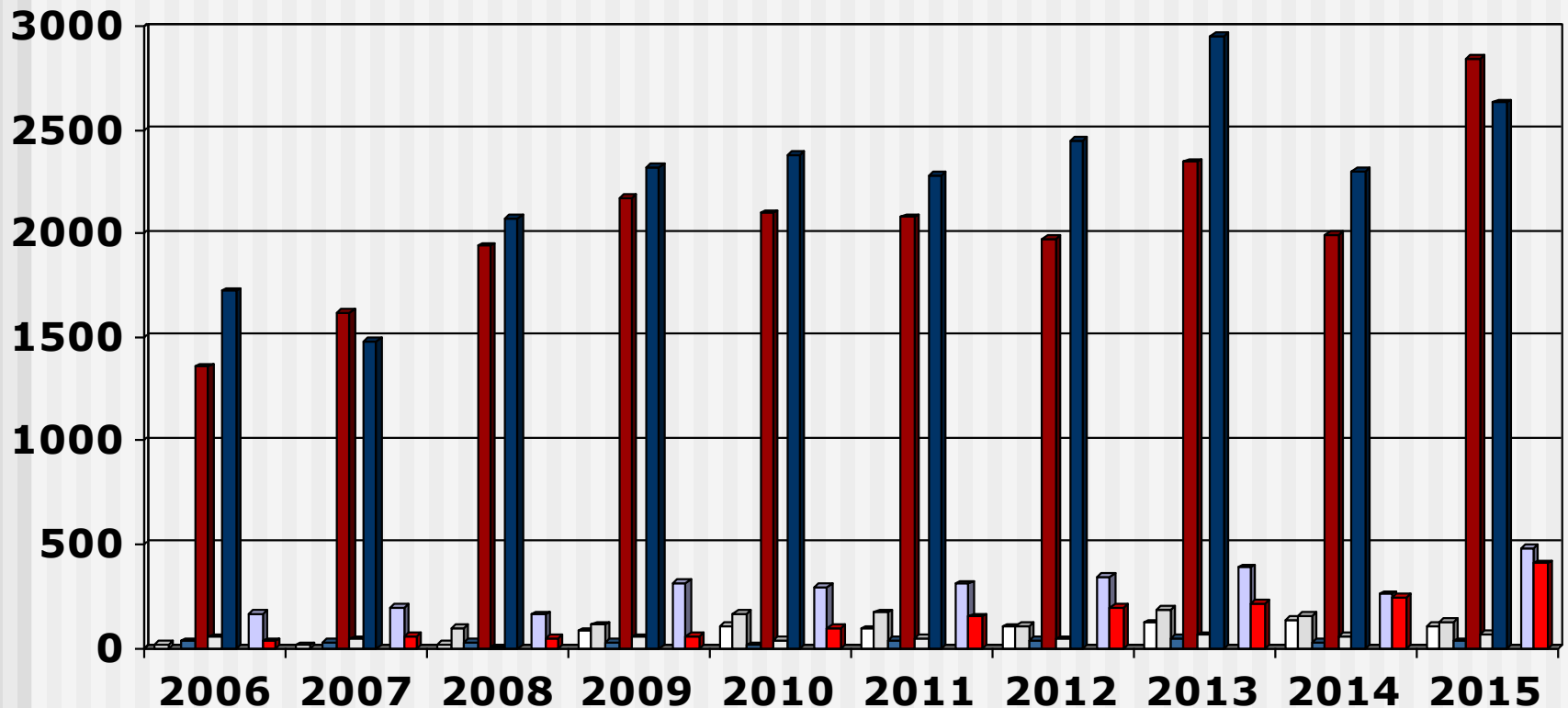
## (2006 - 2015) Overview

---

- These slides show the output of Nursing Education Institutions (Public and Private Institutions) providing the programme leading to enrolment as an Enrolled Nurse for the years 2006 - 2015
- Each slide is presented twice: first all slides are shown without data tables and then the slides are repeated with full data tables
- For further information, please contact:
  - S A Nursing Council:  
Private Bag X132, Pretoria, 0001, Republic of South Africa
  - Phone: 012 420-1000
  - Fax: 012 343-5400
  - E-mail: [registrar@sanc.co.za](mailto:registrar@sanc.co.za)
  - Website: [www.sanc.co.za](http://www.sanc.co.za)

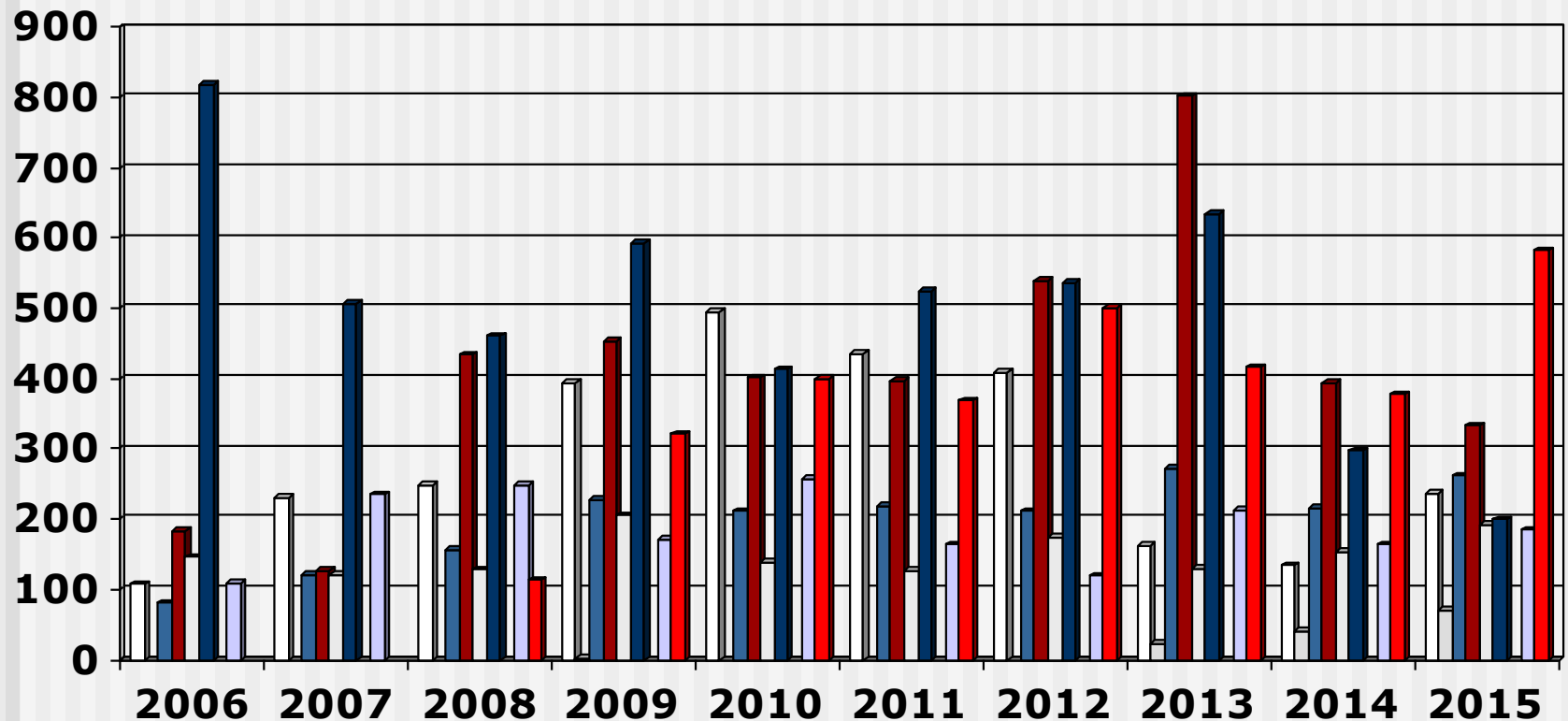
# Output Pupil Nurses

(2006 - 2015) Private Institutions



# Output Pupil Nurses

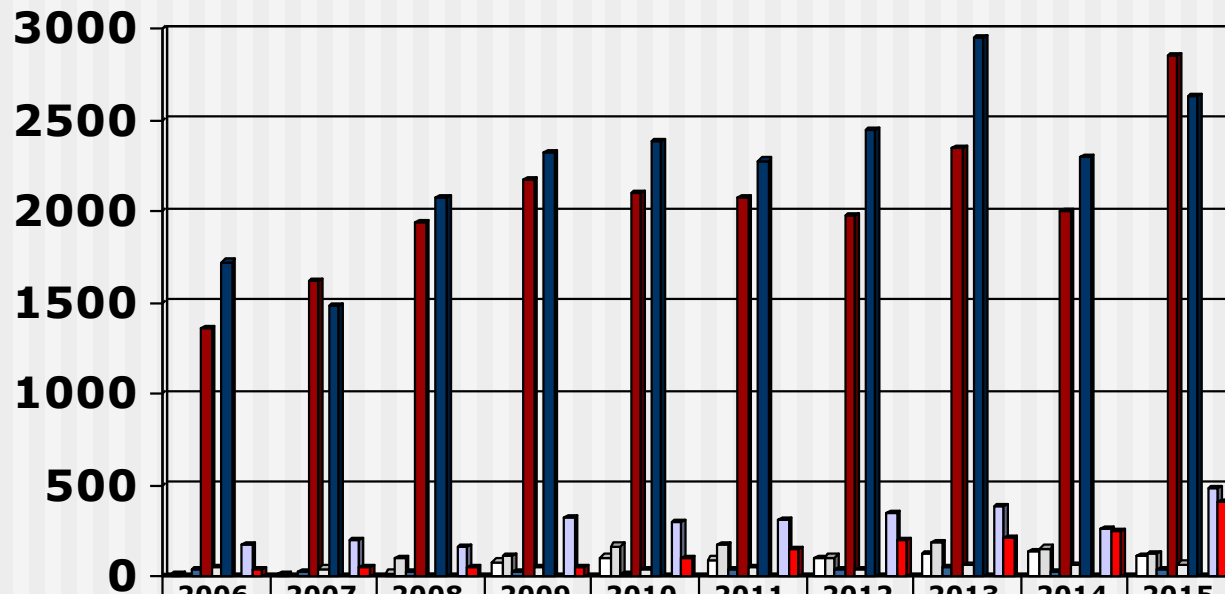
(2006 - 2015) Public Institutions



□ Limpopo    □ North West    ■ Mpumulanga    ■ Gauteng    □ Free State  
■ KwaZulu Natal    ■ Northern Cape    □ Western Cape    ■ Eastern Cape

# Output Pupil Nurses

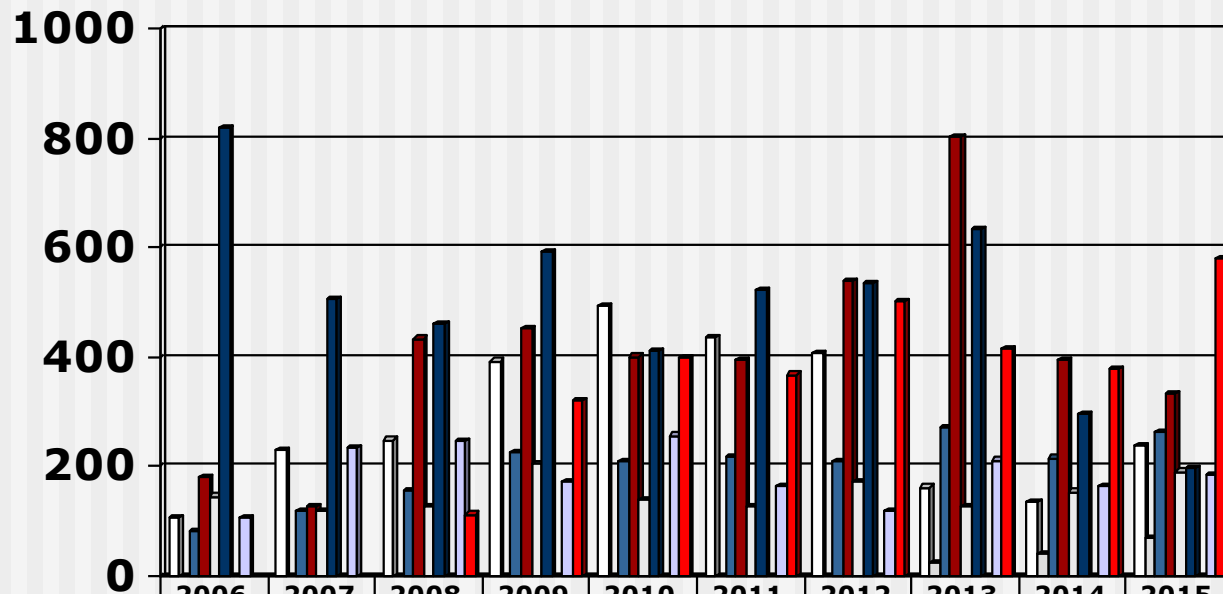
(2006 - 2015) Private Institutions



	2006	2007	2008	2009	2010	2011	2012	2013	2014	2015
□ Limpopo	13	10	18	80	105	92	99	120	132	108
□ North West			96	110	165	171	103	183	153	126
■ Mpumulanga	32	26	25	24	12	34	34	46	25	32
■ Gauteng	1358	1617	1939	2171	2099	2079	1978	2345	1998	2848
□ Free State	50	42	2	52	39	47	41	62	57	66
■ KwaZulu Natal	1722	1478	2077	2322	2383	2278	2448	2951	2301	2633
■ Northern Cape										
□ Western Cape	168	193	160	316	296	307	345	387	260	478
■ Eastern Cape	31	53	49	53	98	150	195	211	246	406

# Output Pupil Nurses

(2006 - 2015) Public Institutions



	2006	2007	2008	2009	2010	2011	2012	2013	2014	2015
□ Limpopo	107	231	249	393	494	436	409	162	134	237
□ North West				1				23	41	71
■ Mpumulanga	81	120	156	227	211	219	211	271	216	262
■ Gauteng	182	126	434	453	401	396	540	802	394	333
□ Free State	146	120	128	205	139	126	173	129	154	191
■ KwaZulu Natal	818	507	460	593	413	524	536	634	297	199
■ Northern Cape										
□ Western Cape	108	235	248	172	257	164	119	212	164	184
■ Eastern Cape			113	321	399	368	501	416	377	582