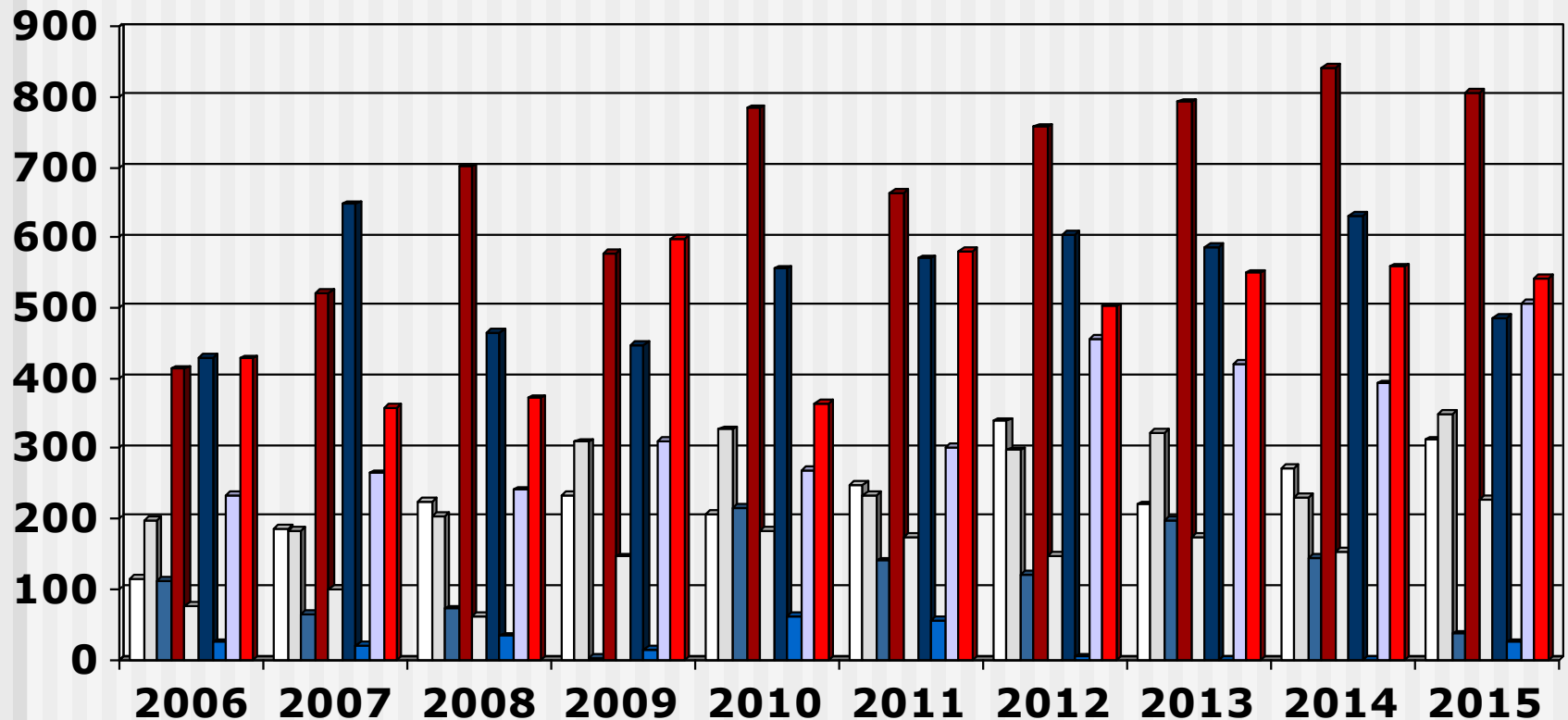


Output 4-Year Programme (2006 - 2015) Overview

- These slides show the output of Nursing Education Institutions (Nursing Colleges and Universities) providing the 4-year programme leading to registration as a Nurse (General, Psychiatric and Community) and Midwife for the years 2006 - 2015
- Each slide is presented twice: first all slides are shown without data tables and then the slides are repeated with full data tables
- For further information, please contact:
 - S A Nursing Council:
Private Bag X132, Pretoria, 0001, Republic of South Africa
 - Phone: 012 420-1000
 - Fax: 012 343-5400
 - E-mail: registrar@sanc.co.za
 - Website: www.sanc.co.za

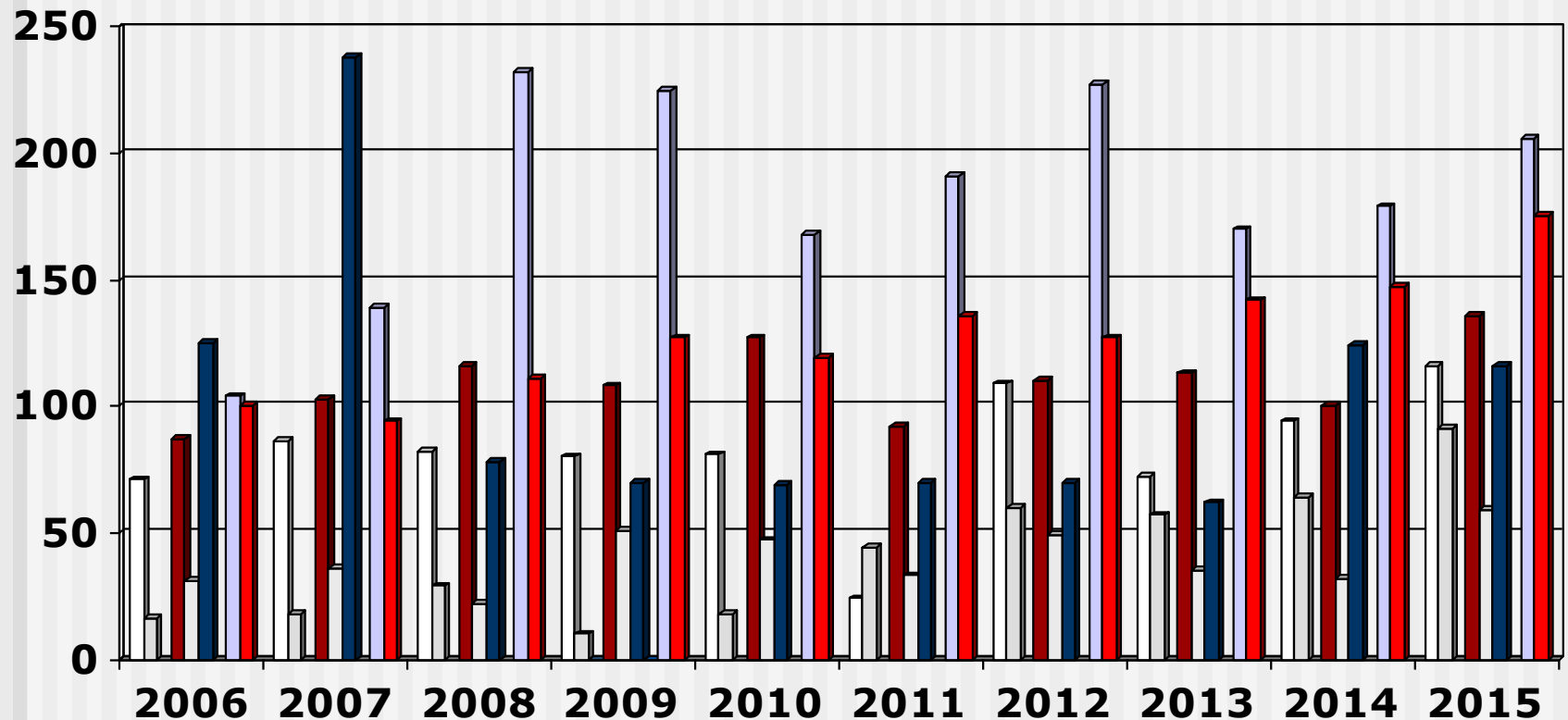
Output 4-Year Programme

(2006 - 2015) All Institutions



□ Limpopo □ North West ■ Mpumulanga ■ Gauteng □ Free State
■ KwaZulu Natal ■ Northern Cape □ Western Cape ■ Eastern Cape

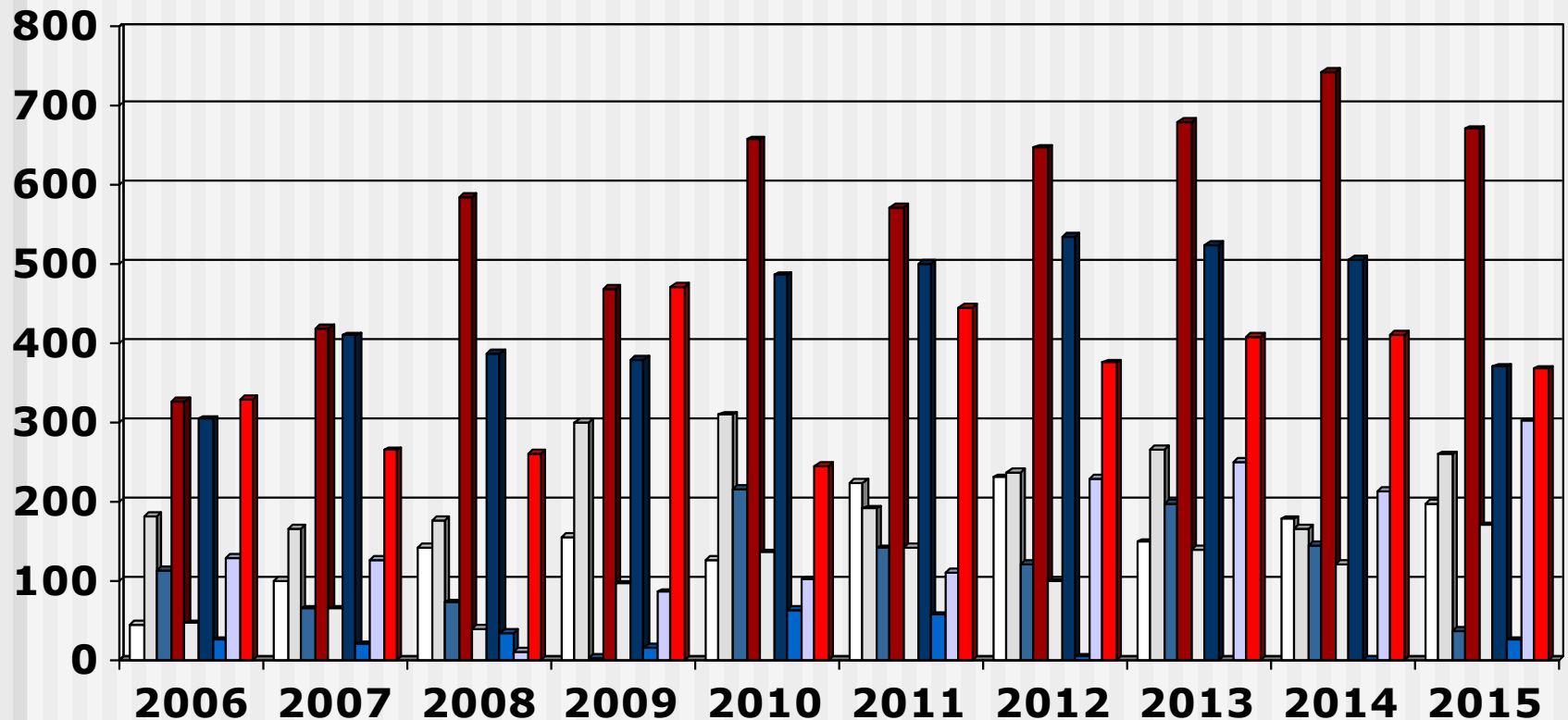
Output 4-Year Programme (2006 - 2015) Universities



Limpopo
 North West
 Mpumulanga
 Gauteng
 Free State

KwaZulu Natal
 Northern Cape
 Western Cape
 Eastern Cape

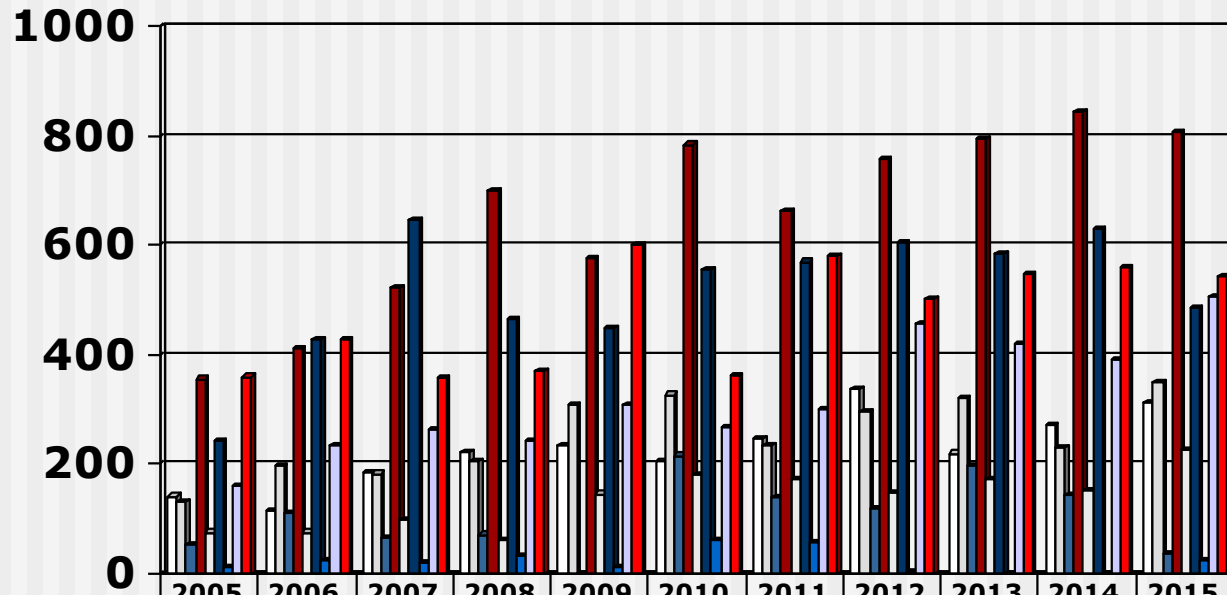
Output 4-Year Programme (2006 - 2015) Nursing Colleges



Limpopo
 North West
 Mpumulanga
 Gauteng
 Free State

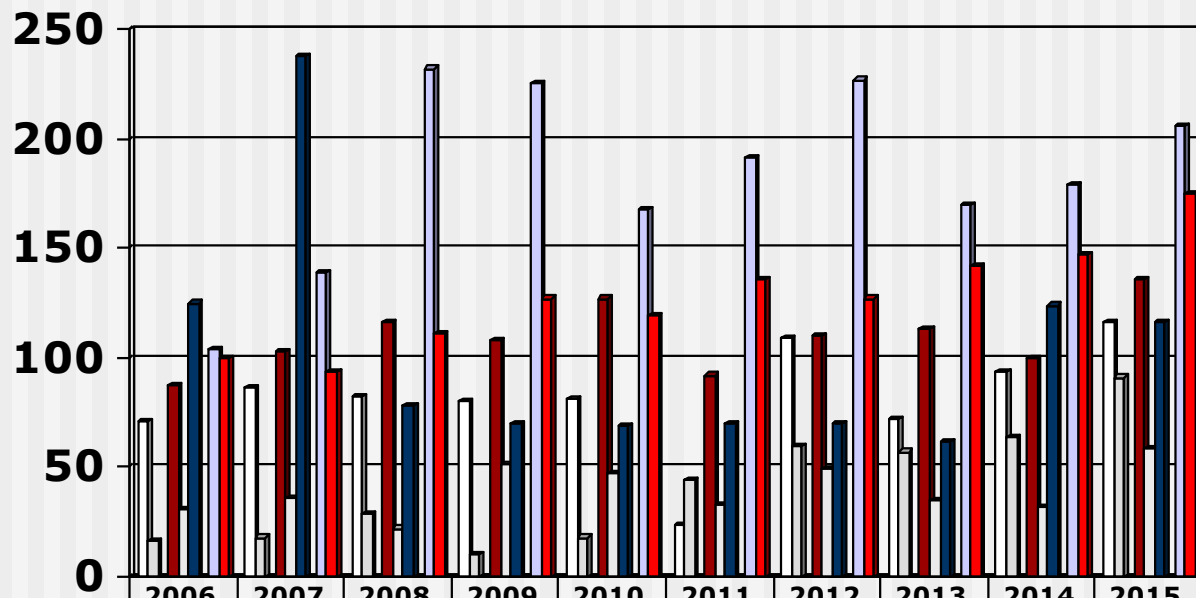
KwaZulu Natal
 Northern Cape
 Western Cape
 Eastern Cape

Output 4-Year Programme (2006 - 2015) All Institutions



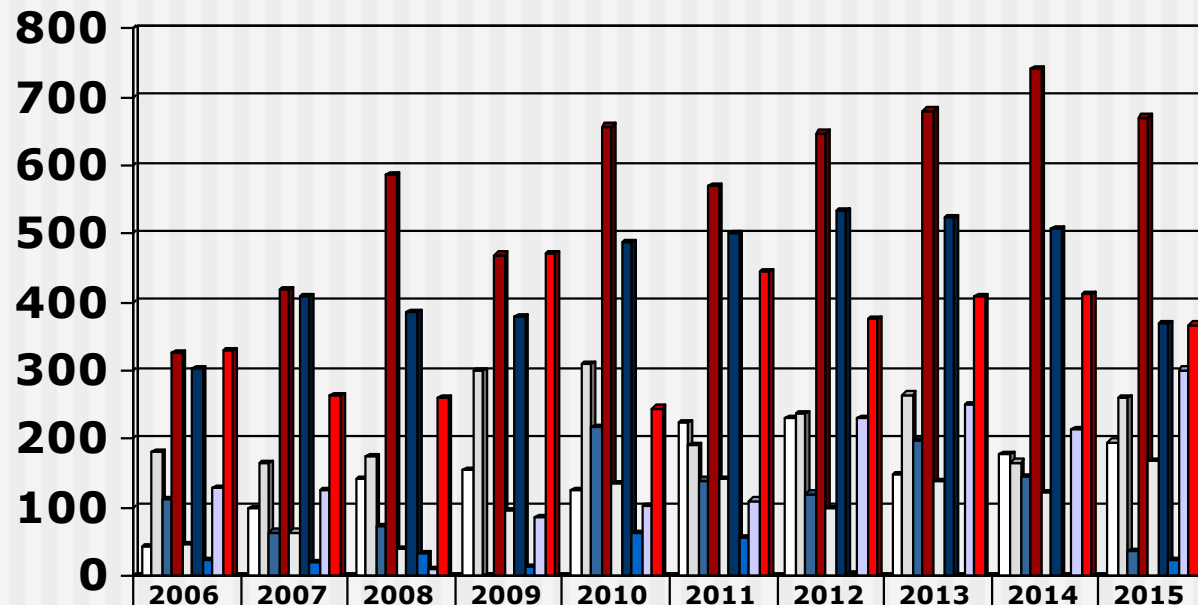
	2005	2006	2007	2008	2009	2010	2011	2012	2013	2014	2015
□ Limpopo	142	114	185	224	234	207	248	339	220	271	312
□ North West	133	198	183	204	309	327	234	297	322	230	350
■ Mpumulanga	52	112	64	72	1	216	140	120	197	145	36
■ Gauteng	356	413	521	701	577	784	663	757	793	842	806
□ Free State	76	76	100	61	146	182	174	147	174	153	228
■ KwaZulu Natal	243	429	647	464	448	555	570	604	586	630	486
■ Northern Cape	11	24	19	33	14	62	56	3	0	0	24
□ Western Cape	160	233	265	241	310	269	301	456	420	392	507
■ Eastern Cape	360	428	358	371	599	364	580	502	549	558	542

Output 4-Year Programme (2006 - 2015) Universities



	2006	2007	2008	2009	2010	2011	2012	2013	2014	2015
□ Limpopo	71	86	82	80	81	24	109	72	94	116
□ North West	16	18	29	10	18	44	60	57	64	91
■ Mpumulanga				0						
■ Gauteng	87	103	116	108	127	92	110	113	100	136
□ Free State	31	36	22	51	47	33	49	35	32	59
■ KwaZulu Natal	125	238	78	70	69	70	70	62	124	116
■ Northern Cape				0						
□ Western Cape	104	139	232	225	168	191	227	170	179	206
■ Eastern Cape	100	94	111	127	119	136	127	142	147	175

Output 4-Year Programme (2006 - 2015) Nursing Colleges



	2006	2007	2008	2009	2010	2011	2012	2013	2014	2015
□ Limpopo	43	99	142	154	126	224	230	148	177	196
□ North West	182	165	175	299	309	190	237	265	166	259
■ Mpumulanga	112	64	72	1	216	140	120	197	145	36
■ Gauteng	326	418	585	469	657	571	647	680	742	670
□ Free State	45	64	39	95	135	141	98	139	121	169
■ KwaZulu Natal	304	409	386	378	486	500	534	524	506	370
■ Northern Cape	24	19	33	14	62	56	3			24
□ Western Cape	129	126	9	85	101	110	229	250	213	301
■ Eastern Cape	328	264	260	472	245	444	375	407	411	367