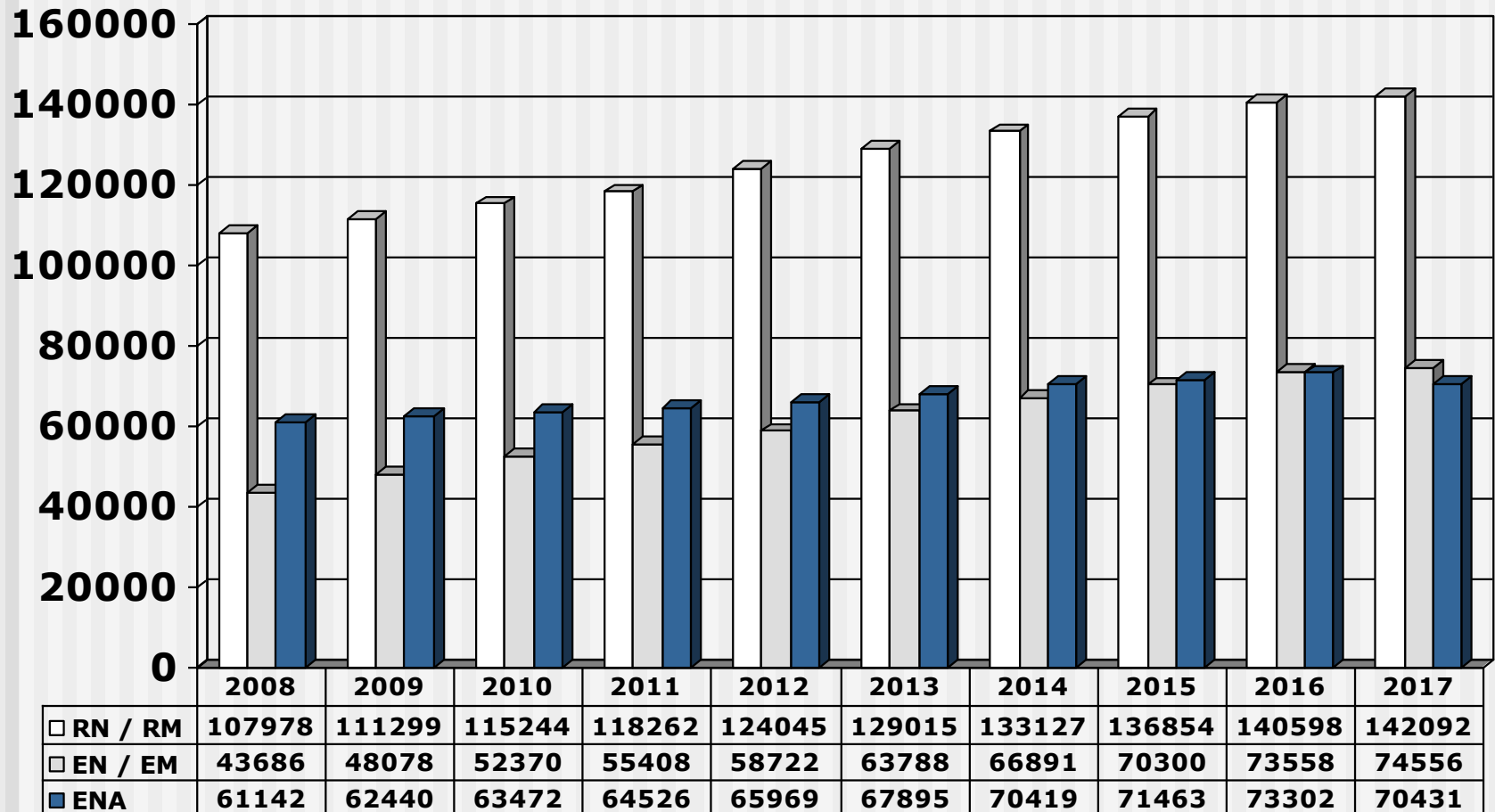


S A Nursing Council Growth in the Registers



S A Nursing Council

Growth in the Registers

Explanatory notes:

Over the 10 year period 2008 to 2017, the total number of nurses on the register has grown from 212 806 to 287 079 – i.e. a net increase of 74 273 (35%).

- The Registered Nurse/Registered Midwife category has grown by 34 114 practitioners (+31%).
- The Enrolled Nurse/Enrolled Midwife category has grown by 30 870 practitioners (+71%).
- The Enrolled Nursing Auxiliary category has grown by 9 289 practitioners (+15%).

During the same period, the population of South Africa increased by 16% from approximately 48.687 million in 2008 (mid-year estimate) to 56.522 million in 2017 (mid-year estimate).

Population figures: Statistics South Africa (mid-year population estimates)

Nursing figures as at 31 December each year

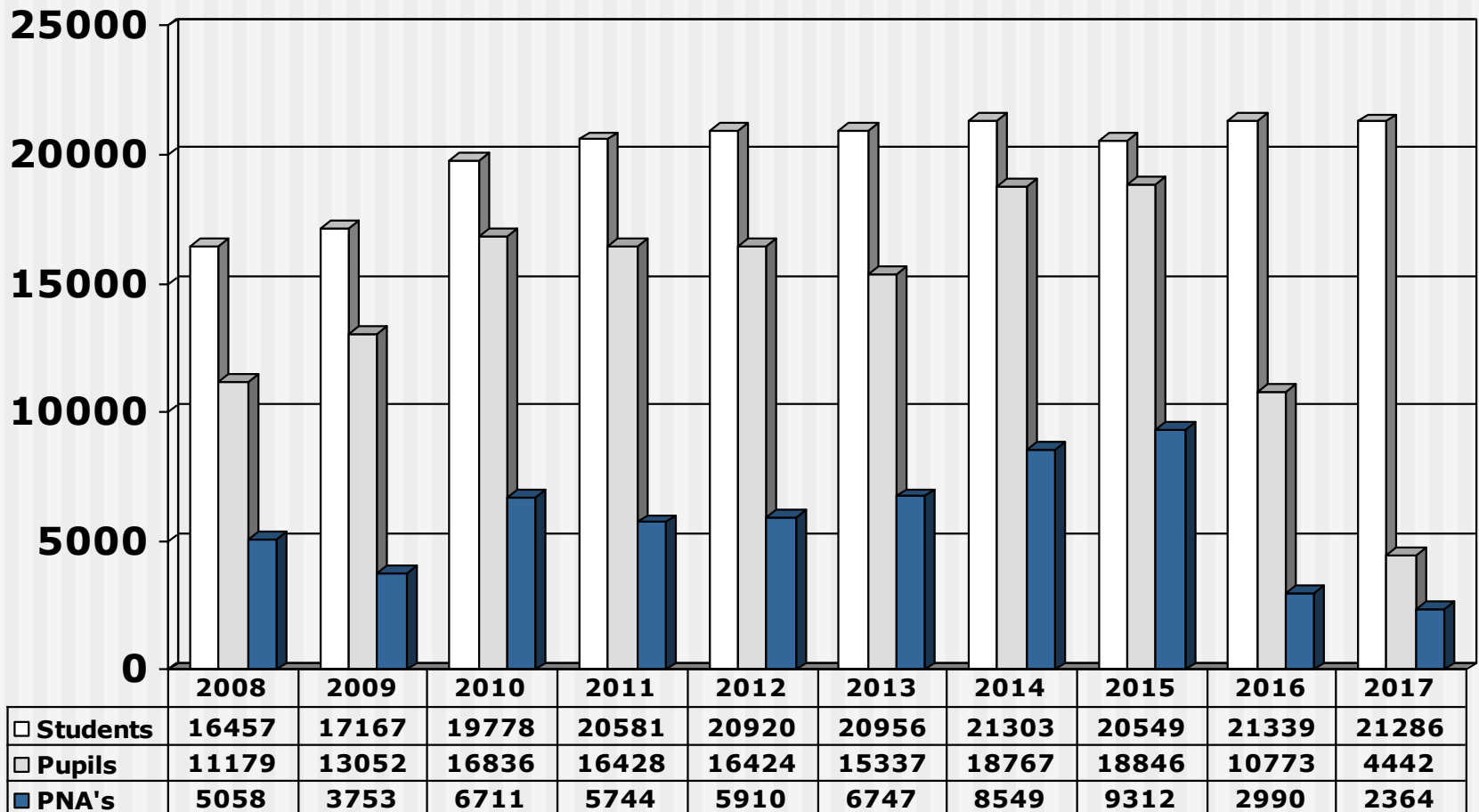
Excludes persons residing outside South Africa

RN / RM = Registered Nurses and Registered Midwives

EN / EM = Enrolled Nurses and Enrolled Midwives

ENA = Enrolled Nursing Auxiliaries

S A Nursing Council Growth in Students/Pupils



S A Nursing Council

Growth in Students/Pupils

Explanatory notes:

This chart reflects persons entering the nursing profession (as students/pupils) for the first time and does not include those busy with bridging or supplementary basic programmes.

When seeking to interpret the information in this chart please remember two important considerations:

1. These figures represent changing populations – there are complete intakes each year followed by terminations (for various reasons) and completions of large groups (usually from previous years).
2. The normal duration of training is different for the three categories – 4 years for Students, 2 years for Pupils and 1 year for Pupil Nursing Auxiliaries.

Figures as at 31 December each year

Students = Student Nurses and Midwives

Pupils = Pupil Nurses

PNA's = Pupil Nursing Auxiliaries