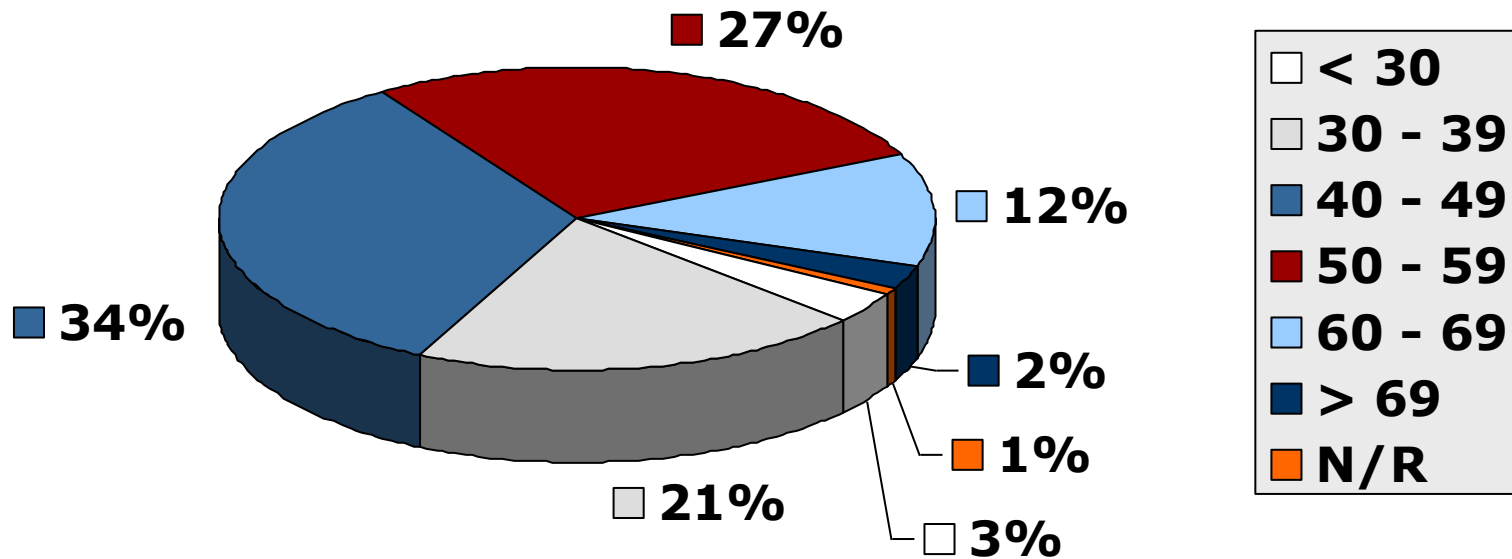
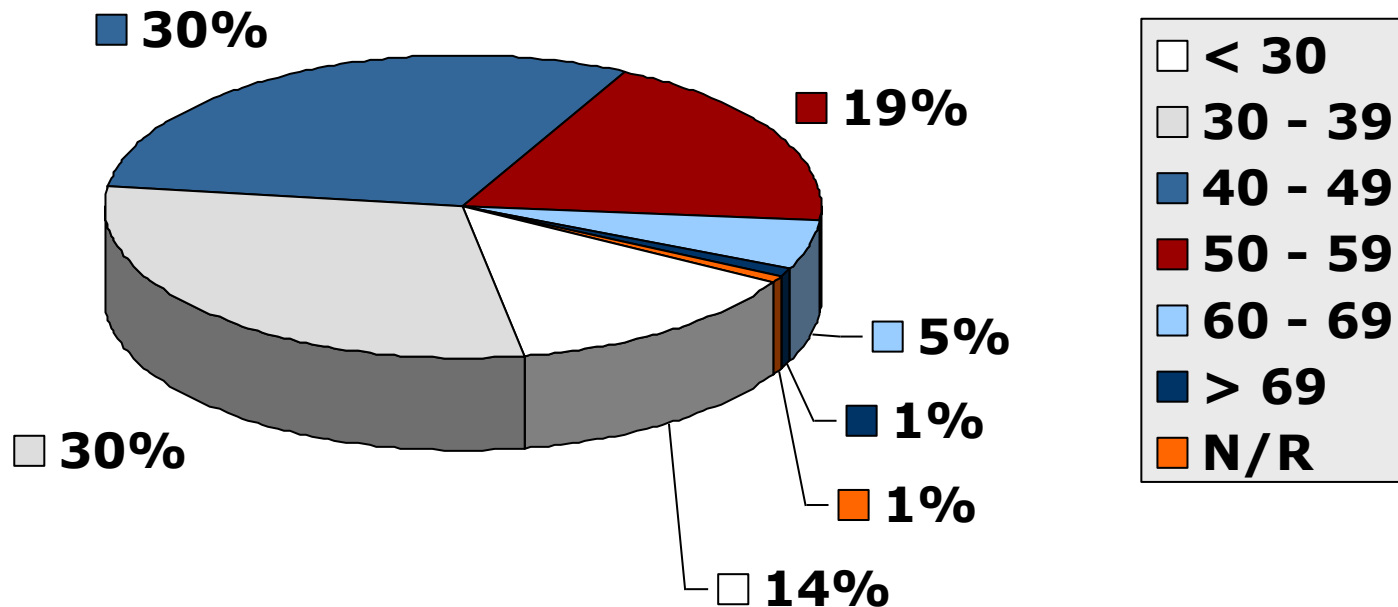


# Age Distribution: Registered Nurses/Midwives



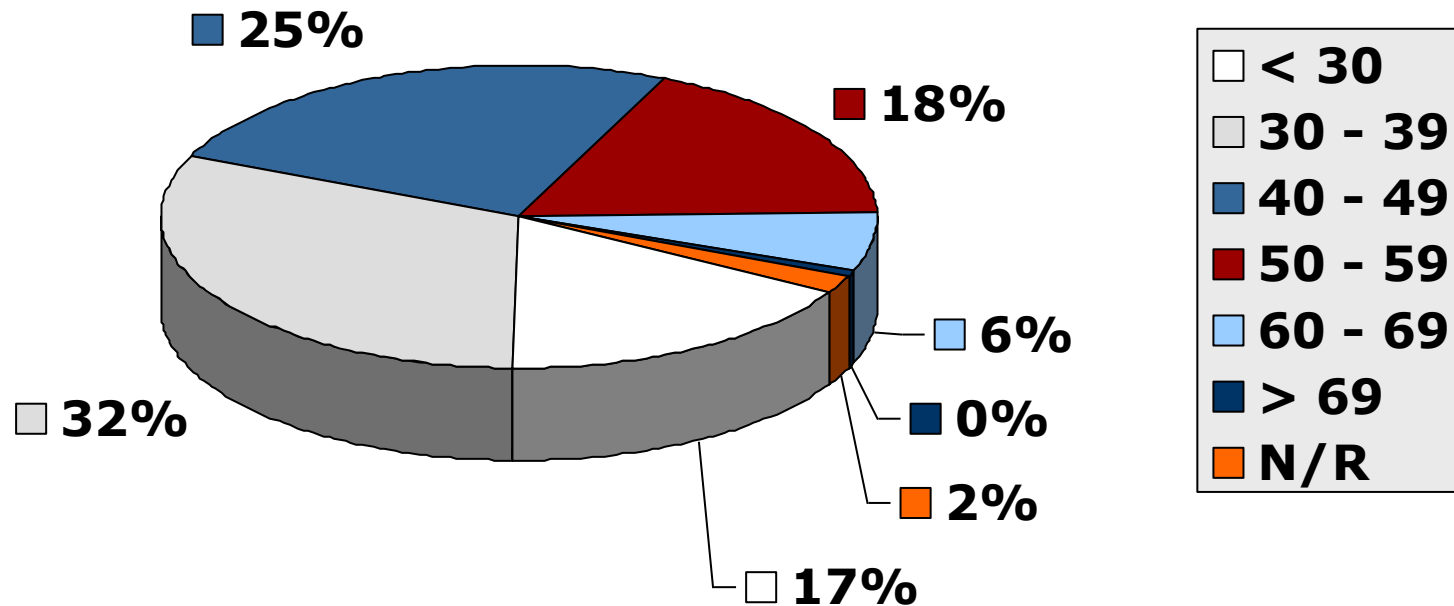
**As at 2008-12-31**

# Age Distribution: Enrolled Nurses/Midwives



**As at 2008-12-31**

# Age Distribution: Enrolled Nursing Auxiliaries



**As at 2008-12-31**

# Age Distribution (table):

## All Nurses (as at 2008-12-31)

<b>Age Group</b>	<b>RN / RM</b>	<b>EN / EM</b>	<b>ENA</b>
< 25	51	641	1500
25 – 29	3589	5428	8913
30 – 34	8220	6417	10023
35 – 39	13925	6687	9142
40 – 44	16650	6939	7980
45 – 49	19558	6229	7229
50 -54	17729	5266	6348
55 – 59	11806	3086	4558
60 – 64	8363	1608	2969
65 - 69	4469	713	936
> 69	2683	264	288
Not Reported	935	408	1256
<b>TOTAL</b>	<b>107978</b>	<b>43686</b>	<b>61142</b>

# Age Analysis: Students/Pupils

(Who commenced for the first time in 2008)

<b>Course Name</b>	<b>Average Age</b>	<b>Minimum Age</b>	<b>Maximum Age</b>	<b>Count (persons)</b>
4-year N+M	26	17	56	4342
Bridging (Gen.)	37	19	63	2646
Psychiatric N	46	32	63	69
Midwifery	44	25	61	985
Enrolled (Gen.)	30	17	62	8485
Enrolled (Comm.)	35	19	56	202
Enrolled (Psy.)	40	22	51	43
Nursing Auxiliary	28	17	61	5880
CHTC (Primary Health)	40	23	61	249
<b>OVERALL</b>	<b>30</b>	<b>17</b>	<b>63</b>	<b>22901</b>

# Age Analysis: Students/Pupils (Who completed training in 2008)

<b>Course Name</b>	<b>Average Age</b>	<b>Minimum Age</b>	<b>Maximum Age</b>	<b>Count (persons)</b>
4-year N+M	30	18	57	2370
Bridging (Gen.)	39	22	65	2624
Psychiatric N	44	29	55	35
Midwifery	44	29	63	713
Enrolled (Gen.)	32	18	62	5941
Enrolled (Comm.)	38	23	61	145
Enrolled (Psy.)	42	23	62	52
Nursing Auxiliary	30	18	50	5592
CHTC (Primary Health)	42	27	58	144
<b>OVERALL</b>	<b>33</b>	<b>18</b>	<b>65</b>	<b>17616</b>