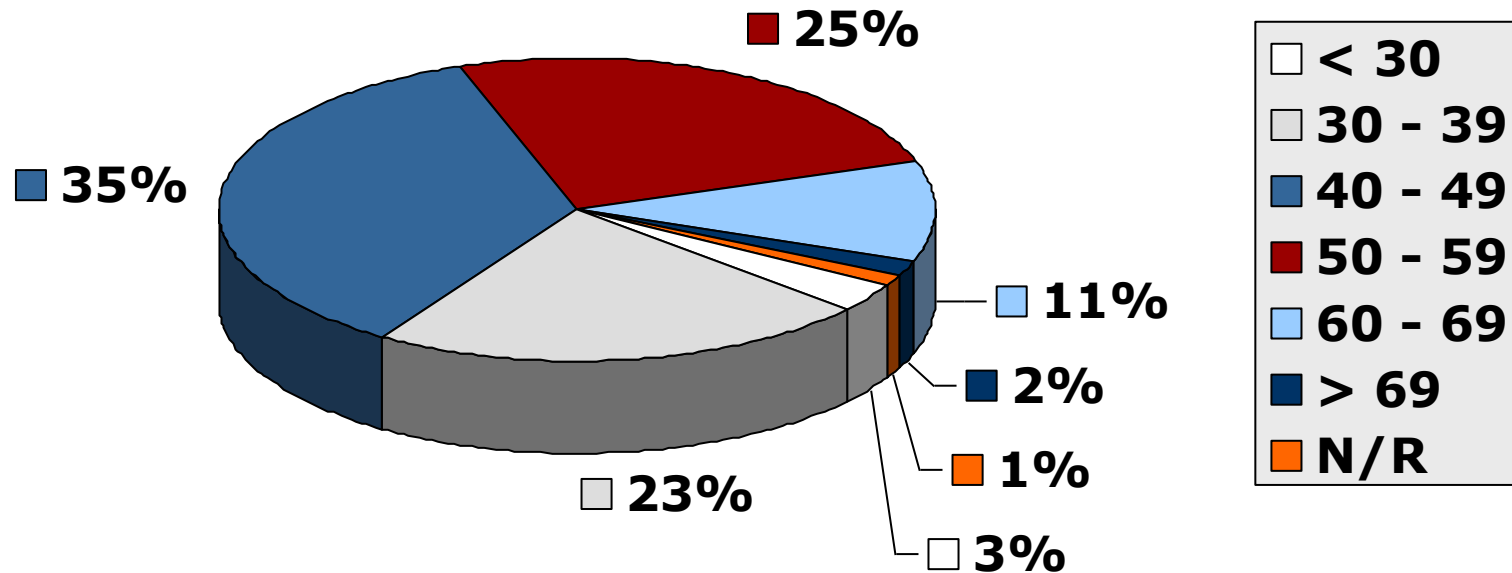
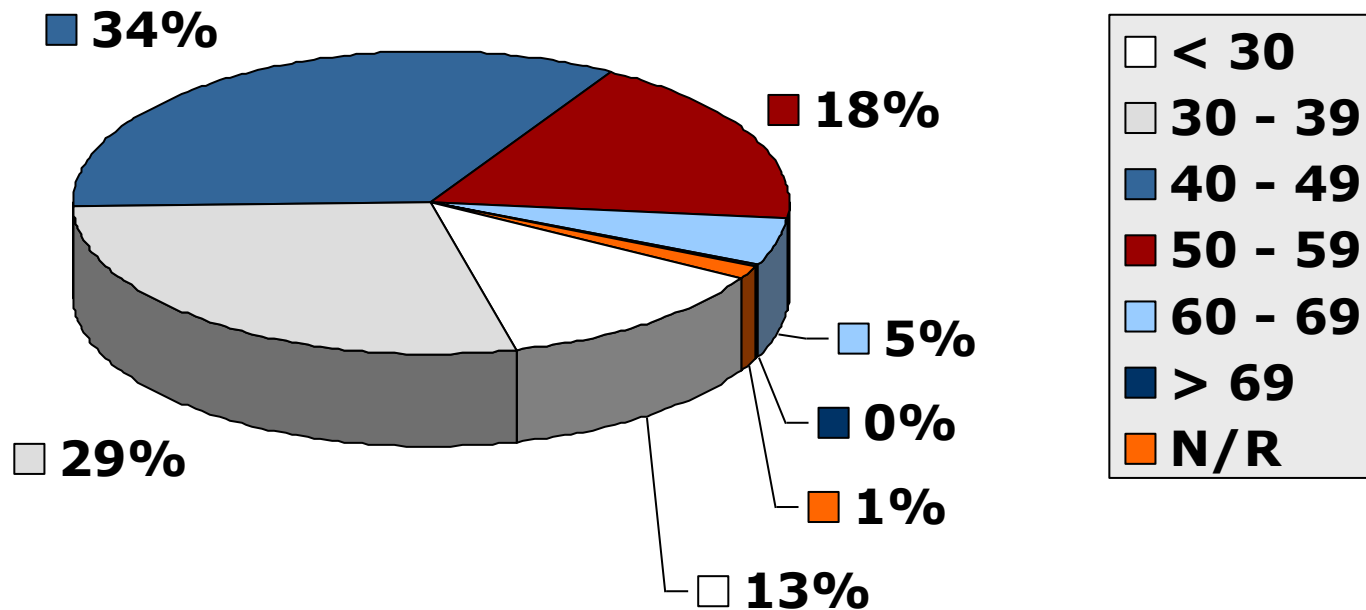


# Age Distribution: Registered Nurses/Midwives



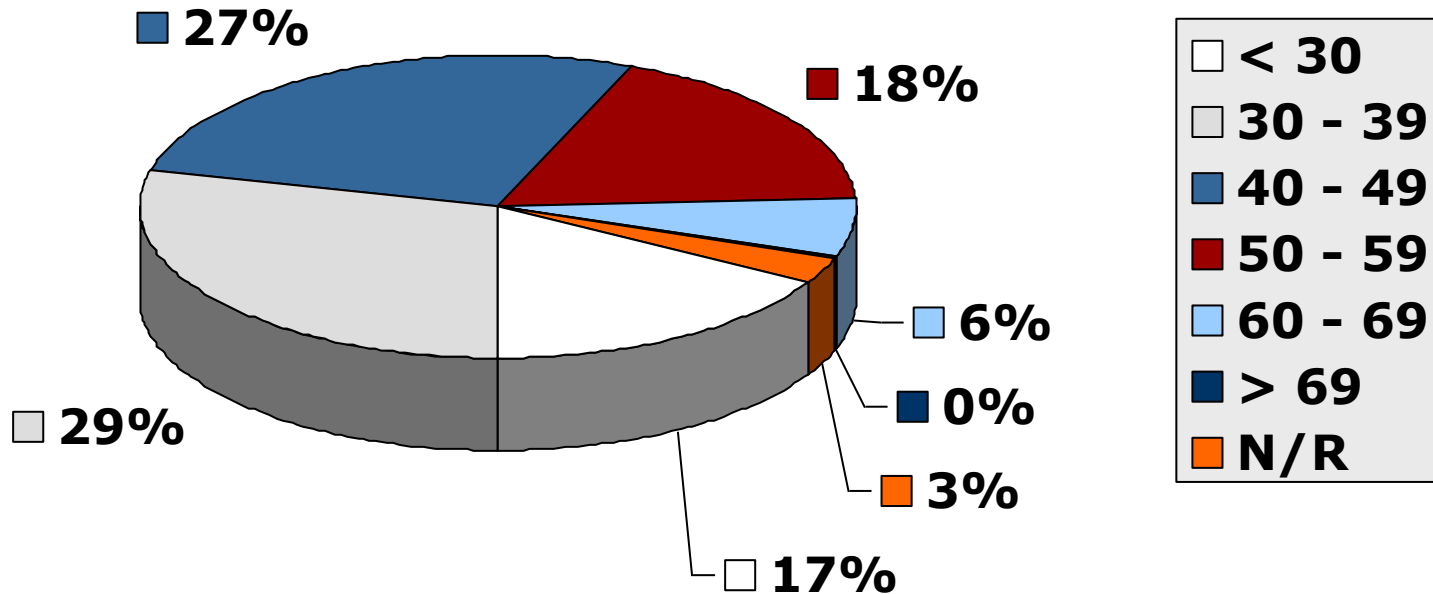
**As at 2006-12-31**

# Age Distribution: Enrolled Nurses/Midwives



**As at 2006-12-31**

# Age Distribution: Enrolled Nursing Auxiliaries



**As at 2006-12-31**

# Age Distribution (table):

## All Nurses (as at 2006-12-31)

<b>Age Group</b>	<b>RN / RM</b>	<b>EN / EM</b>	<b>ENA</b>
< 25	63	782	1754
25 – 29	3090	4215	7694
30 – 34	9298	5137	8274
35 – 39	13810	6189	7909
40 – 44	17438	6949	7751
45 – 49	18953	6221	7592
50 -54	15071	4674	6003
55 – 59	10299	2573	4241
60 – 64	7225	1329	2521
65 - 69	3765	589	817
> 69	1888	183	214
Not Reported	1032	508	1556
<b>TOTAL</b>	<b>101932</b>	<b>39349</b>	<b>56326</b>

# Age Analysis: Students/Pupils

(Who commenced for the first time in 2006)

<b>Course Name</b>	<b>Average Age</b>	<b>Minimum Age</b>	<b>Maximum Age</b>	<b>Count (persons)</b>
4-year N+M	26	17	55	2608
Bridging (Gen.)	36	20	63	2734
Psychiatric N	43	33	56	101
Midwifery	43	25	60	894
Enrolled (Gen.)	30	17	65	5804
Enrolled (Comm.)	36	23	55	113
Enrolled (Psy.)	53	53	53	2
Nursing Auxiliary	28	17	66	5304
CHTC (Primary Health)	41	27	60	277
<b>OVERALL</b>	<b>31</b>	<b>17</b>	<b>66</b>	<b>17837</b>

# Age Analysis: Students/Pupils (Who completed training in 2006)

<b>Course Name</b>	<b>Average Age</b>	<b>Minimum Age</b>	<b>Maximum Age</b>	<b>Count (persons)</b>
4-year N+M	30	19	58	2025
Bridging (Gen.)	41	22	65	2347
Psychiatric N	45	36	57	38
Midwifery	44	29	62	1218
Enrolled (Gen.)	31	19	66	4725
Enrolled (Comm.)	40	21	55	66
Enrolled (Psy.)	45	35	53	16
Nursing Auxiliary	29	18	64	5418
CHTC (Primary Health)	41	27	62	158
Community N/Sc.	45	40	52	5
<b>OVERALL</b>	<b>33</b>	<b>18</b>	<b>66</b>	<b>16011</b>